

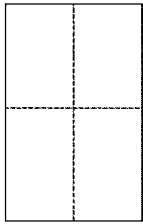
CORNER RECORD

Document Number APN 034-252-16

City of TIBURON

County of MARIN, California

Brief Legal Description LOT 42 BELVERON GARDENS UNIT FOUR 7 R.M.23



CORNER TYPE

Government Corner Control
Meaneder Property
Rancho Other
Date of Survey FEB. 9, 2015

COORDINATES (Optional)

N. _____
E. _____
Zone _____ NAD27 NAD83
NAD83 Epoch _____
Elev. _____
Vert. Datum: NGVD29 NAVD88
Meas. Units: Metric Imperial

Corner - Left as found Found and tagged Established Reestablished Rebuilt

Identification and type of corner found: Evidence used to identify or procedure used to establish or reestablish the corner:

FOUND CENTERLINE MONUMENTS PER 7 RM 23 IN JEFFERSON DRIVE & WASHINGTON COURT, USED RECORD BEARINGS AND DISTANCE TO RESTABLISH LOT CORNER ON LOT 42.

A description of the physical condition of the monument as found and as set or reset:

SET RIVET AND BRASS TAG AT S/W LOT COR, SET 1/2" I.P. AT S/E LOT COR, BOTH TAGGED LS7237

SURVEYOR'S STATEMENT

This Corner Record was prepared by me or under my direction in conformance with the Land Surveyor's Act on FEBRUARY 17, 2015

Signed Michael E. Ford P.L.S. or R.C.E. No. 7237



COUNTY SURVEYOR'S STATEMENT

This Corner Record was received FEBRUARY 23, 2015 and examined and filed APRIL 2, 2015

Signed Richard G. Simonitch P.L.S. or R.C.E. No. 7821

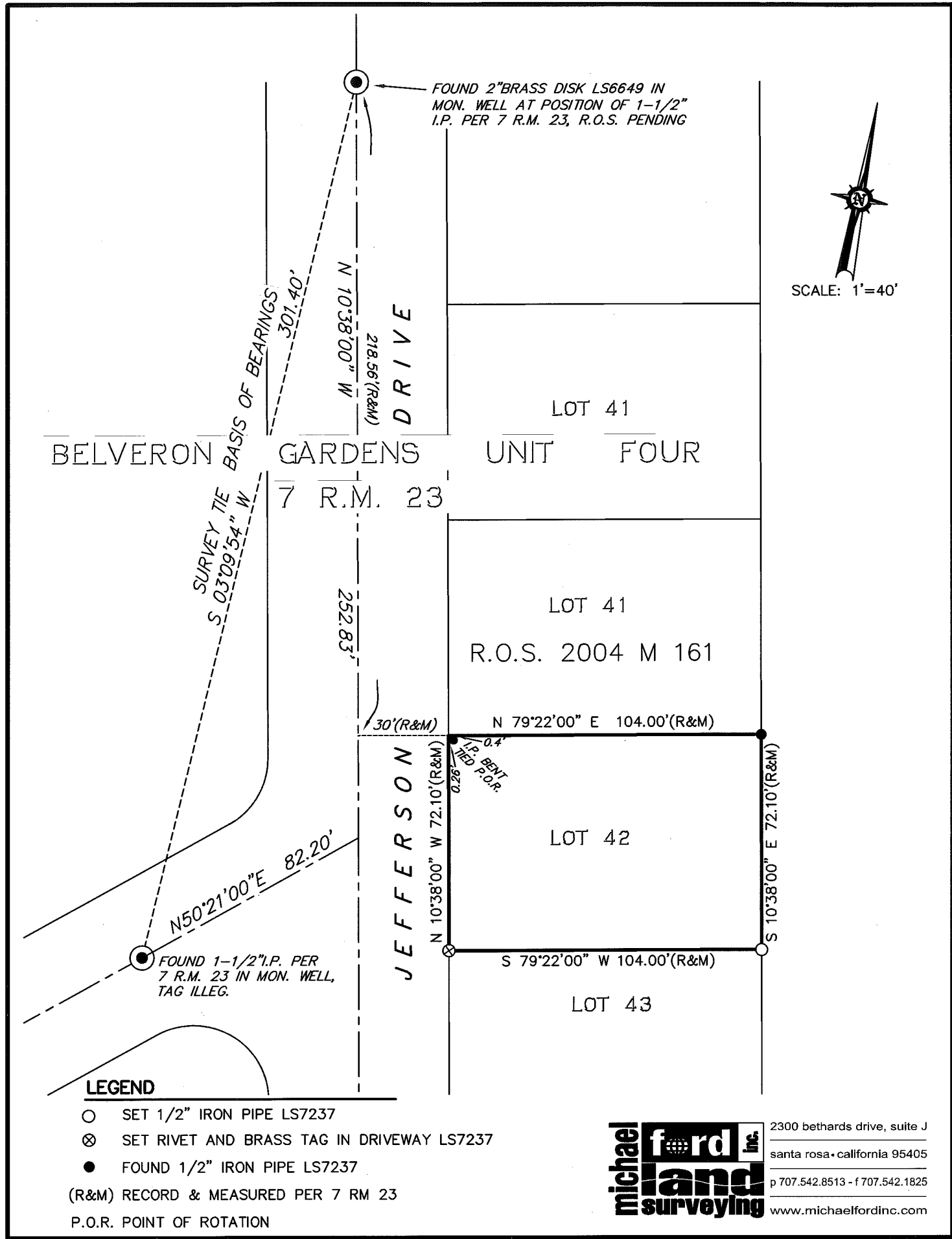
Title Deputy



County Surveyor's Comment



SCALE: 1"=40'



LEGEND

- SET 1/2" IRON PIPE LS7237
 - ⊗ SET RIVET AND BRASS TAG IN DRIVEWAY LS7237
 - FOUND 1/2" IRON PIPE LS7237
- (R&M) RECORD & MEASURED PER 7 RM 23
- P.O.R. POINT OF ROTATION

michael ford inc.
land surveying

2300 bethards drive, suite J
 santa rosa • california 95405
 p 707.542.8513 - f 707.542.1825
 www.michaelfordinc.com