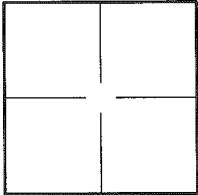


CORNER RECORD

Document Number APN 034-252-10

Town of TIBURON County of MARIN, California

Brief Legal Description _____ A.P. NO. 034-252-010



CORNER TYPE

Government Corner Control
Meander Property
Rancho Other
Date of Survey JULY 19, 2016

COORDINATES (Optional)

N. _____
E. _____
Zone _____ NAD27 NAD83
NAD83 Epoch _____
Elev. _____
Vet. Datum: NGVD29 NAVD88
Meas. Units: Metric Imperial

Corner -- Left as found Found and tagged Established Reestablished Rebuilt

Identification and type of corner found: Evidence used to identify or procedure used to establish or reestablish the corner:

FOUND 3/4" IRON PIPE IN MONUMENT WELL AS SHOWN ON THAT CERTAIN MAP, 7 MAPS PG 2

SEE PAGE 2

A description of the physical condition of the monument as found and as set or reset:

SET (4) 3/4" IRON PIPES, TAGGED "LS 7539"

SEE PAGE 2

SURVEYOR'S STATEMENT

This Corner Record was prepared by me or under my direction in conformance with the Land Surveyor's Act on OCTOBER 3 20 16

Signed [Signature] P.L.S. or R.C.E. No. LS 7539



COUNTY SURVEYOR'S STATEMENT

This Corner Record was received OCTOBER 11, 2016 20

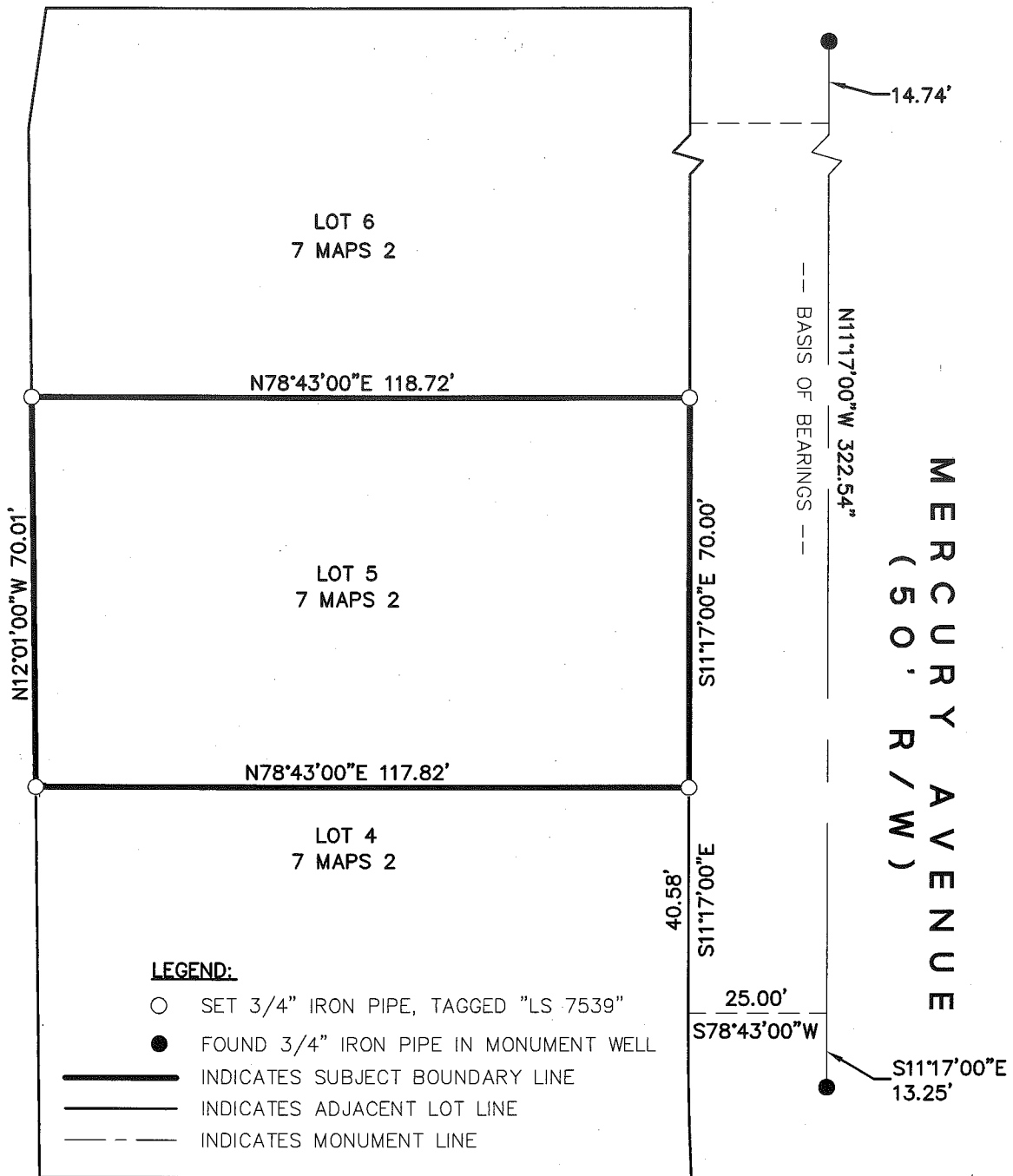
and examined and filed November 1, 2016 20

Signed [Signature] P.L.S. or B.C.E. No. 7821

Title County Surveyor



County Surveyor's Comment: _____



GRAPHIC SCALE



(IN FEET)
1 inch = 30 ft.

