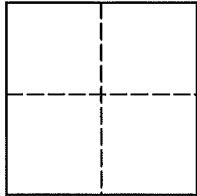


Lands of Lasky/King Family Trust
Job #: 13-1442

CORNER RECORD Document Numbers 034-261-32, 034-252-08&09

Town of Tiburon, County of Marin, California

Brief Legal Description: Being Lot 15 of that certain map entitled "Map of Belveron Gardens Unit One", filed in Book 7 of Maps at Page 2, Marin County Records.



CORNER TYPE

Government Corner Control
Meander Property
Rancho Other

Date of Survey January 24, 2013

COORDINATES (Optional)

N _____
E _____
Zone _____ NAD27 NAD83
NAD 83 Epoch _____
Elev. _____
Vert. Datum: NGVD29 NAVD88
Meas. Units: Metric Imperial

Corner - Left as found Found and tagged Established Reestablished Rebuilt

Identification and type of corner found: Evidence used to identify or procedure used to establish or reestablish the corner:
See Page 2 of 2.

A description of the physical condition of the monument as found and as set or reset:

Set two 3/4" Iron Pipes and Yellow Plastic Plugs, stamped, "LA STEVENS LS 6649", with cup tacks, each 1.5' from the West corner of Lot 15. 7 RM2, to be used for swing ties to the corner.

Set 2 3/4 " smooth finish nail & brass tag, stamped "LS 6649", to perpetuate nail shank in 3/4" I.D. Iron Pipe in hand hole, found at the intersection of Mercury Avenue and Apollo Road.

SURVEYOR'S STATEMENT

This Corner Record was prepared by me or under my direction in conformance with

The Land Surveyor's Act on January 29, 2013.

Signed [Signature] P.L.S 6649



COUNTY SURVEYOR'S STATEMENT

This Corner Record was received FEBRUARY 14, 2013

and examined and filed MARCH 20, 2013

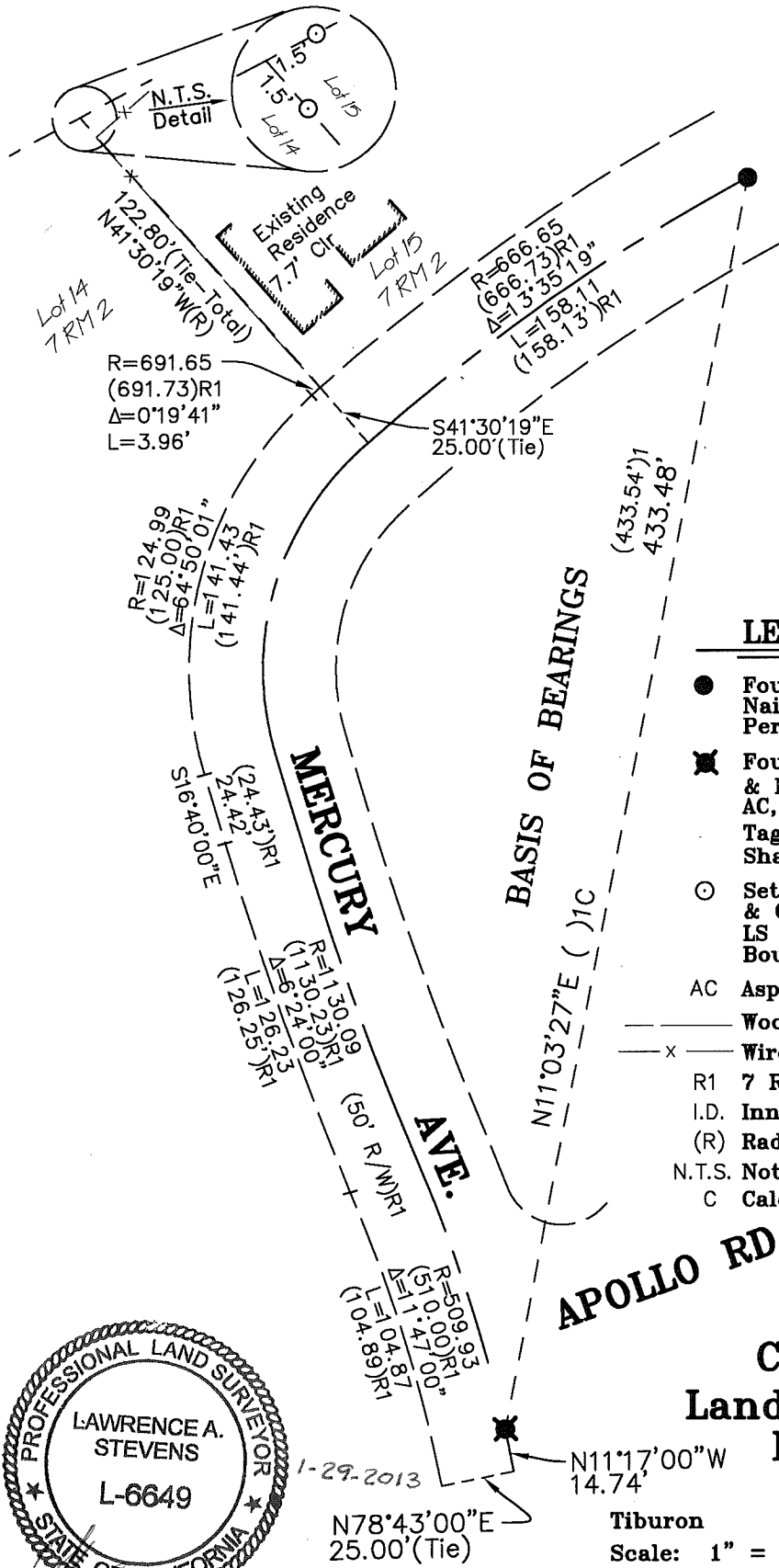
Signed [Signature] P.L.S. or R.C.E. No. 7821

Title DEPUTY COUNTY SURVEYOR

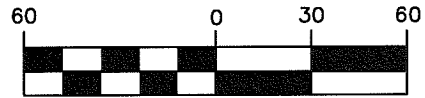


County Surveyors' Comment _____

All distances shown are in feet and decimals thereof



GRAPHIC SCALE



IN FEET

LEGEND

- Found 1" I.D. Iron Pipe & Common Nail, In Hand Hole, 0.2' Below AC, Per R1
- ✱ Found 3/4" I.D. Iron Pipe & Wood Plug, & Nail Shank, In Hand Hole, 0.4' Below AC, per R1, Set 8d Finish Nail & Brass Tag, Stamped "LS 6649", To Perpetuate Shank Position
- Set 3/4" I.D. Iron Pipe, & Plastic Plug, & Cup Tack, Stamped "L.A. Stevens, LS 6649", Set As Witness Monuments to Boundary Corner
- AC Asphalt Concrete
- Wood Fence
- x- Wire Fence
- R1 7 RM 2
- I.D. Inner Diameter
- (R) Radial
- N.T.S. Not to Scale
- C Calculated



Corner Record
Lands of Lasky/King
Family Trust

(Lot 15, 7 RM 2)

Tiburon Marin County California
Scale: 1" = 60' January 24, 2013

L.A. Stevens & Associates, Inc.

Professional Land Surveyors * (415) 382-7713
7 Commercial Blvd., Suite 1 * Novato, CA 94949

Lawrence A. Stevens, PLS 6649