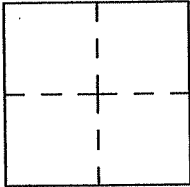


CORNER RECORD

Document number A.P.N. 034-251-19

City of TIBURON County of MARIN, California

Brief Legal Description LOT 13 AS SHOWN UPON "BELVERON GARDENS, UNIT 4",  
7 R.M. 23, MARIN COUNTY RECORDS



CORNER TYPE

Government Corner  Control   
Meander  Property   
Rancho  Other   
Date of Survey \_\_\_\_\_

COORDINATES

N. \_\_\_\_\_  
E. \_\_\_\_\_  
Zone \_\_\_\_\_ Datum \_\_\_\_\_  
Elev. \_\_\_\_\_

Corner-- Left as found  found and tagged  Established  Reestablished  Rebuilt

Identification and type of corner found: Evidence used to identify or procedure used to establish or reestablish the corner:  
UTILIZED STREET CENTERLINE MONUMENTS AS SHOWN UPON 7 R.M. 23 AS A BASIS OF  
BEARINGS TO MONUMENT PROPERTY LINE POINTS OF LOT 13 AS SHOWN UPON SAID MAP.

A description of the physical condition of the monument as found and as set or reset. \_\_\_\_\_  
STREET CENTERLINE MONUMENTS, GALVANIZED IRON PIPES, MEASURED PER 7 R.M. 23.

SURVEYOR'S STATEMENT

This Corner Record was prepared by me or under my direction in conformance with  
the Land Surveyor's Act on April 20, 2012.

Signed [Signature] L.S. Number 7744

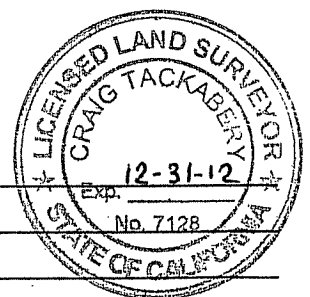


COUNTY SURVEYOR'S STATEMENT

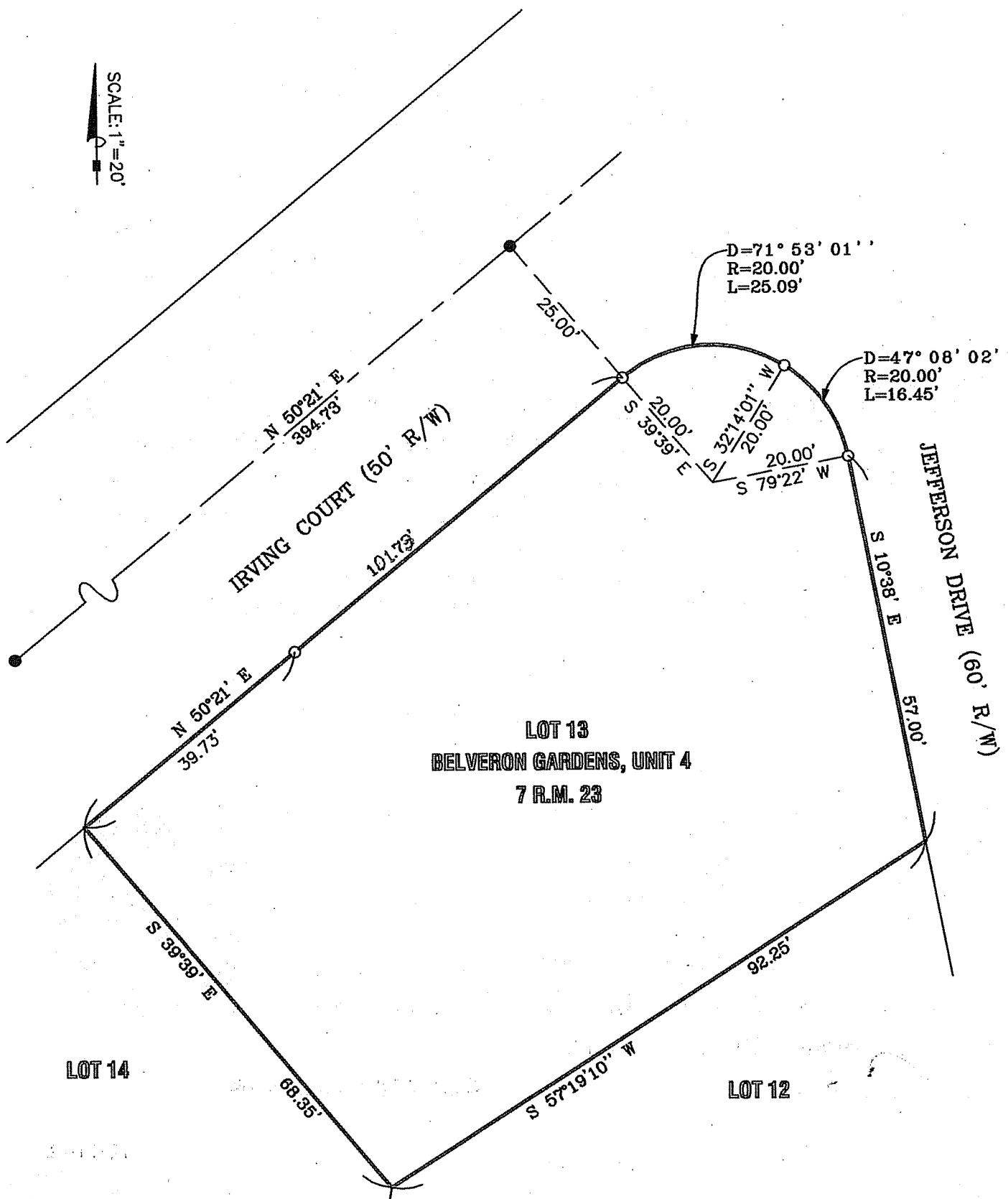
This Corner Record was received APRIL 23 2012 and examined  
and filed APRIL 25, 2012.

Signed [Signature] Title COUNTY SURVEYOR

County Surveyor's Comment \_\_\_\_\_  
\_\_\_\_\_  
\_\_\_\_\_



SCALE: 1"=20'



LOT 13  
BELVERON GARDENS, UNIT 4  
7 R.M. 23

LOT 14

LOT 12

- FOUND MONUMENT PER 7 R.M. 23
- SET 1/2" REBAR & PLASTIC CAP, P.L.S. 7744