

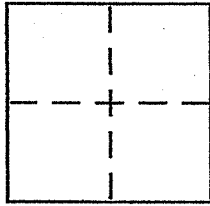
CORNER RECORD

Document Number 34-243.32

City of TIBURON

County of MARIN, California

Brief Legal Description PARCEL A 21 PM 19



CORNER TYPE

Government Corner [ ] Control [ ]
Meander [ ] Property [ ]
Rancho [ ] Other [ ]
Date of Survey NOV. 15, 2007

COORDINATES (Optional)

N.
E.
Zone NAD27 [ ] NAD83 [ ]
NAD83 Epoch
Elev.
Vert. Datum: NGVD29 [ ] NAVD88 [ ]
Meas. Units: Metric [ ] Imperial [ ]

Corner - Left as found [ ] Found and tagged [ ] Established [ ] Reestablished [x] Rebuilt [ ]

Identification and type of corner found: Evidence used to identify or procedure used to establish or reestablish the corner:

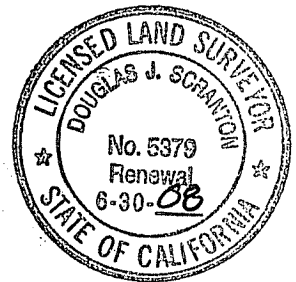
REESTABLISH THE EASTERLY & WESTERLY LINES OF PARCEL A, 21 PM 19 FROM EXISTING STANDARD STREET MONUMENTS OF RECORD ON SOUTH RIDGE EAST. REFER TO SKETCH ON REVERSE SIDE FOR DETAILS

A description of the physical condition of the monument as found and as set or reset: AT THE NE CORNER SET 1/2" REBAR WITH PLS CAP 5379; AT NW CORNER SET BRASS NAIL WITH BRASS TAG LS5379 IN TOP OF CURB ON A PROJECTION OF THE LOT LINE & 2.25' FROM THE ACTUAL CORNER; SET HUB & TACK AT RANDOM INTERVALS ALONG SIDE LOT LINES BEING 2.00' FROM ACTUAL LOT LINE

SURVEYOR'S STATEMENT

This Corner Record was prepared by me or under my direction in conformance with the Land Surveyor's Act on DEC. 4th 2007

Signed Douglas J. Scranton P.L.S or R.G.E. No. PLS 5379



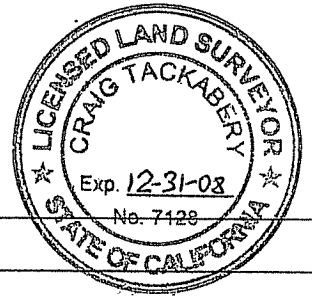
COUNTY SURVEYOR'S STATEMENT

This Corner Record was received DECEMBER 6, 2007

and examined and filed JANUARY 9, 2008

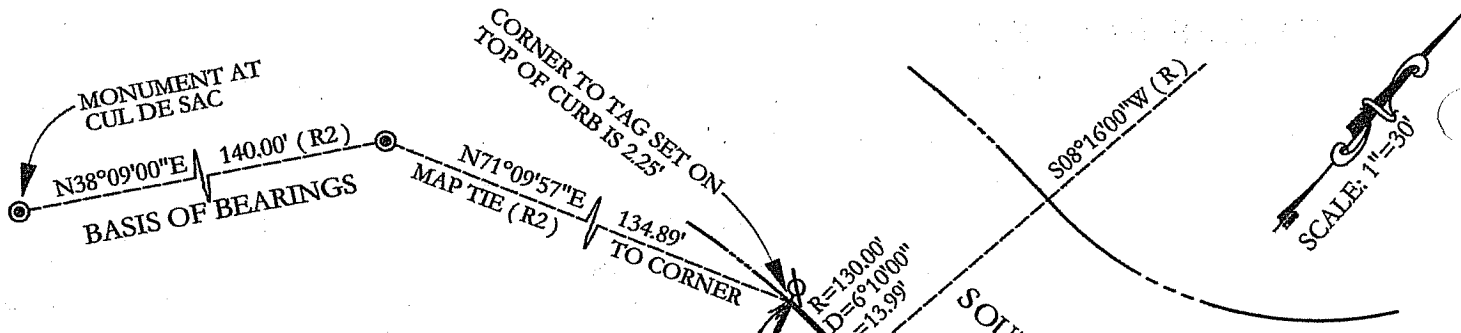
Signed [Signature] P.L.S or R.G.E. No. 7128

Title COUNTY SURVEYOR



County Surveyor's Comment

PREPARED BY DJ SCRANTON SURVEYING NO. 1250 CALIFORNIA



**LEGEND**

- SET 1/2" REBAR/PLS 5379
- SET HUB AND TACK 2' FROM LOT LINE
- ⊗ SET BRASS NAIL WITH BRASS TAG LS 5379 IN TOP OF CURB ON LOT LINE PROJECTED
- FOUND MONUMENTATION AS NOTED
- ⊙ STANDARD STREET MONUMENT PER R2

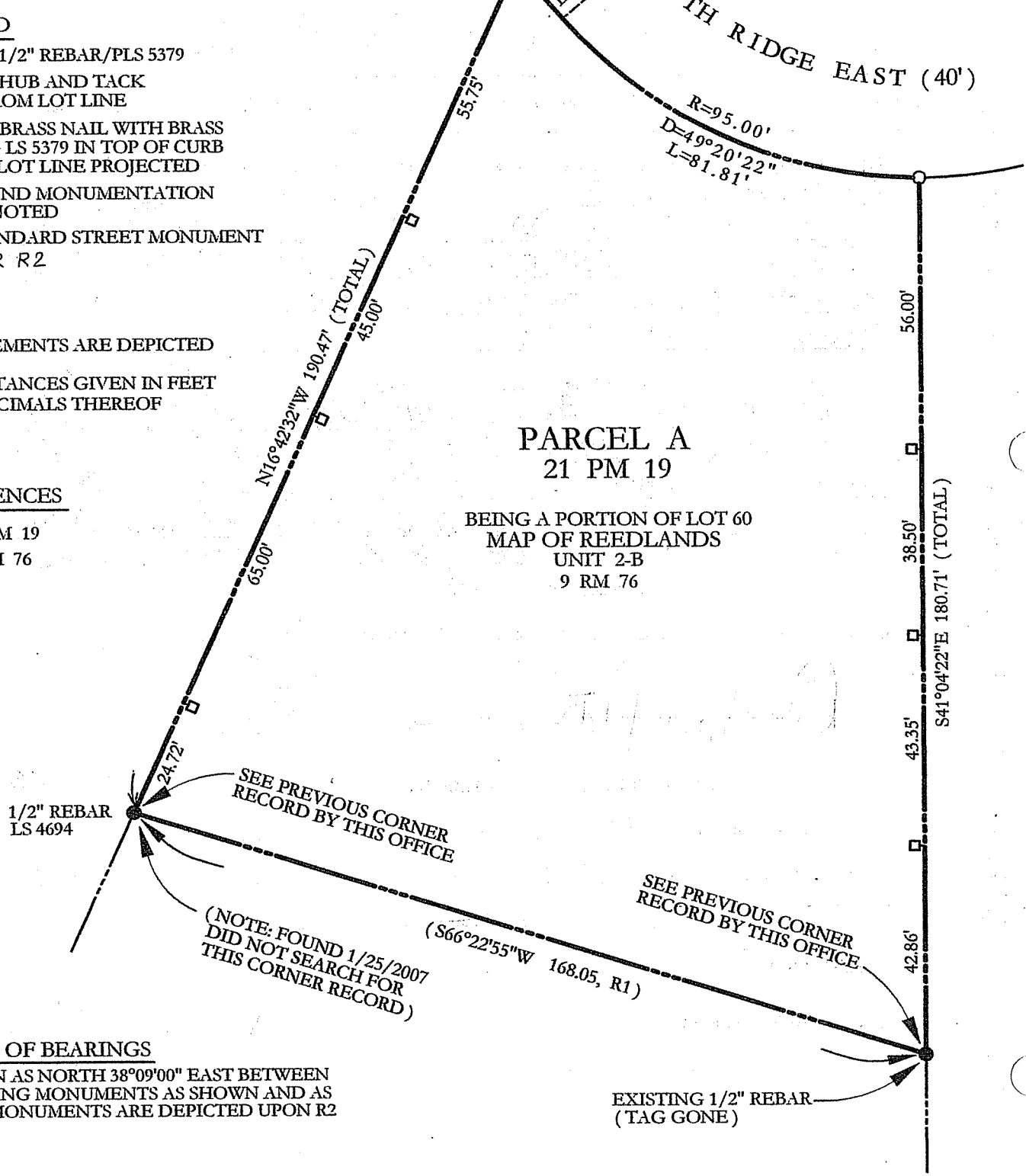
NO EASEMENTS ARE DEPICTED  
 ALL DISTANCES GIVEN IN FEET AND DECIMALS THEREOF

**REFERENCES**

- R1 21 PM 19
- R2 9 RM 76

**PARCEL A  
 21 PM 19**

BEING A PORTION OF LOT 60  
 MAP OF REEDLANDS  
 UNIT 2-B  
 9 RM 76



**BASIS OF BEARINGS**

TAKEN AS NORTH 38°09'00" EAST BETWEEN EXISTING MONUMENTS AS SHOWN AND AS SAID MONUMENTS ARE DEPICTED UPON R2

EXISTING 1/2" REBAR (TAG GONE)