

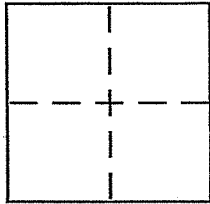
CORNER RECORD

Document Number 34.243.32

City of TIBURON

County of MARIN, California

Brief Legal Description PARCEL A 21 PM 19



CORNER TYPE

Government Corner Control
Meander Property
Rancho Other
Date of Survey 1/25/2007

COORDINATES (Optional)

N. _____
E. _____
Zone: _____ NAD27 NAD83
NAD83 Epoch _____
Elev. _____
Vert. Datum: NGVD29 NAVD88
Meas. Units: Metric Imperial

Corner - Left as found Found and tagged Established Reestablished Rebuilt

Identification and type of corner found: Evidence used to identify or procedure used to establish or reestablish the corner:

RE-ESTABLISH THE SOUTHERLY LINE OF PARCEL A, 21 PM 19 FROM EXISTING MONUMENTATION AT THE SOUTHWESTERLY & SOUTHEASTERLY OF SAID PARCEL. REFER TO SKETCH ON REVERSE SIDE FOR PARTICULARS.

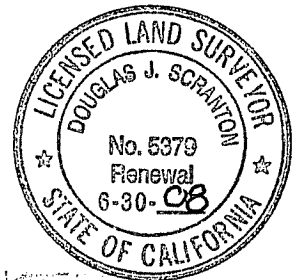
A description of the physical condition of the monument as found and as set or reset: set 1/2" kebar

with PLASTIC CAP AFFIXED TO TOP EMBOSSED "SCRANTON, PLS 5379" & DRIVEN FLUSH TO SURROUNDING GRADE; POINTS SET AT RANDOM INTERVALS ALONG SAID SOUTHERLY LINE

SURVEYOR'S STATEMENT

This Corner Record was prepared by me or under my direction in conformance with the Land Surveyor's Act on JANUARY 30th 2007

Signed Douglas J. Scranton P.L.S or R.C.E. No. PLS 5379



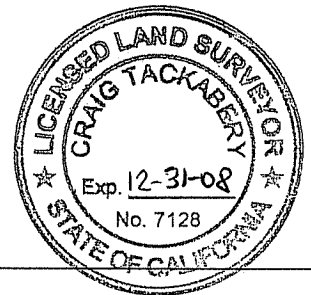
COUNTY SURVEYOR'S STATEMENT

This Corner Record was received FEBRUARY 1, 2007

and examined and filed FEBRUARY 26, 2007

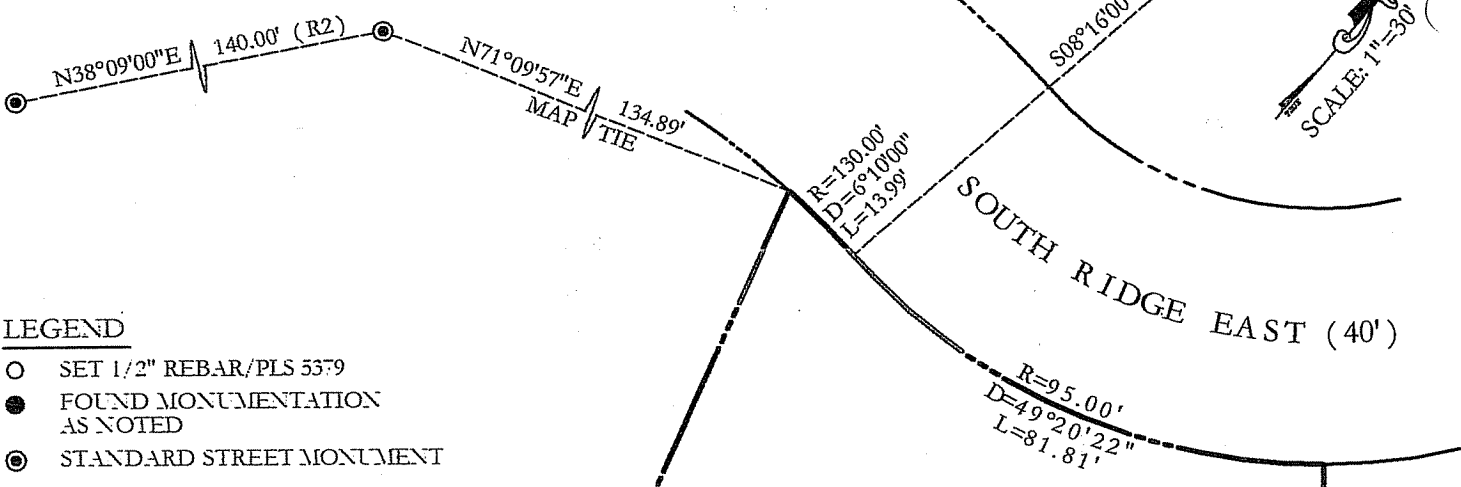
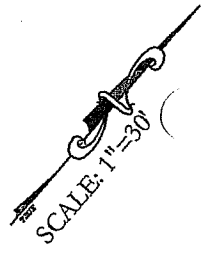
Signed [Signature] P.L.S or R.C.E. No. 7128

Title COUNTY SURVEYOR



County Surveyor's Comment _____

PREPARED BY DJ SCRANTON SURVEYING NOVATO, CA



LEGEND

- SET 1/2" REBAR/PLS 5379
- FOUND MONUMENTATION AS NOTED
- ⊙ STANDARD STREET MONUMENT

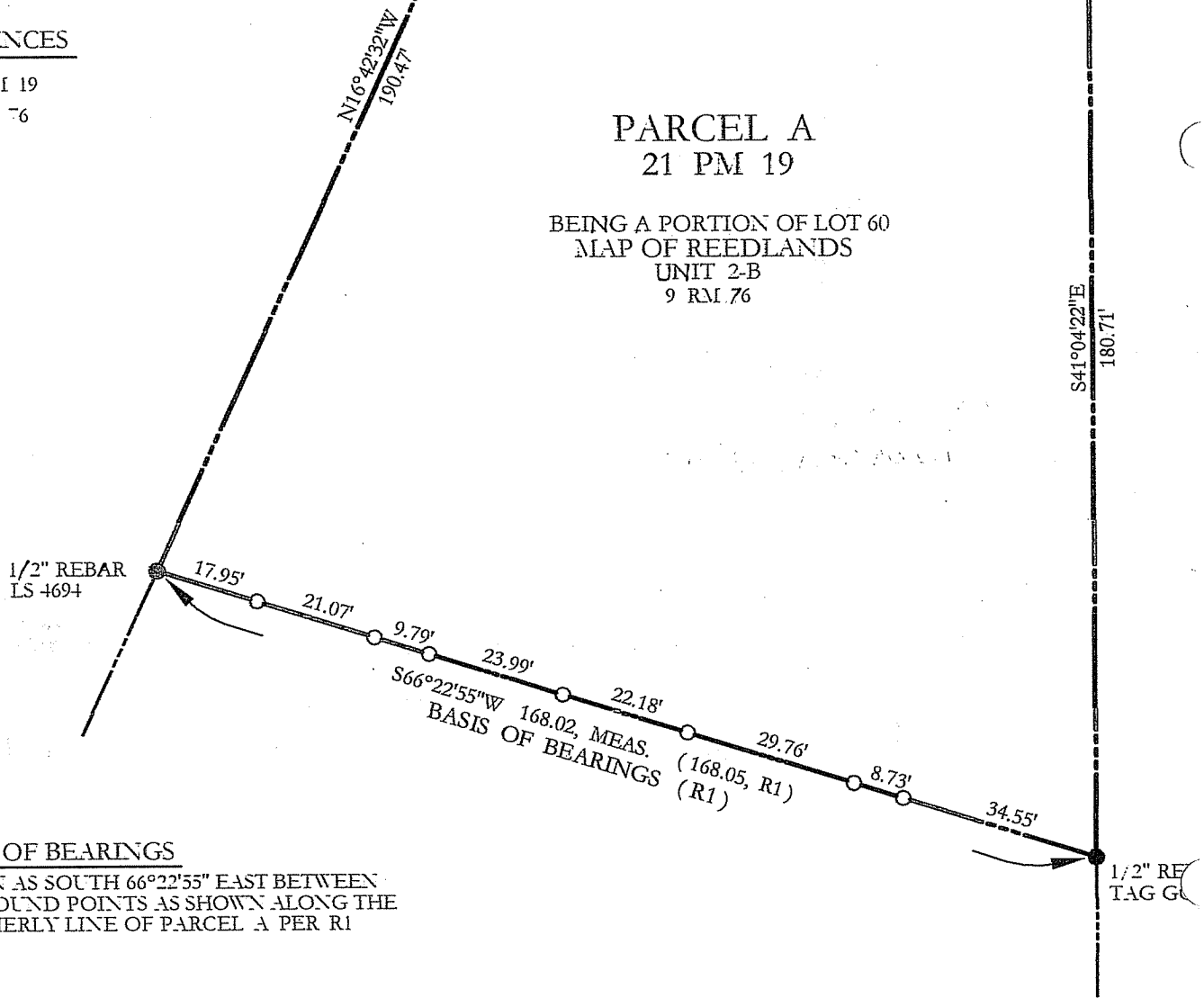
NO EASEMENTS ARE DEPICTED
 ALL DISTANCES GIVEN IN FEET AND DECIMALS THEREOF

REFERENCES

- R1 21 PM 19
- R2 9 RM 76

PARCEL A
 21 PM 19

BEING A PORTION OF LOT 60
 MAP OF REEDLANDS
 UNIT 2-B
 9 RM 76



BASIS OF BEARINGS

TAKEN AS SOUTH 66°22'55" EAST BETWEEN THE FOUND POINTS AS SHOWN ALONG THE SOUTHERLY LINE OF PARCEL A PER R1