

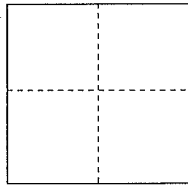
CORNER RECORD

Documented Number AP No. 34-243-03

City of Tiburon

County of Marin, California

Brief Legal Description Being Lot 63, as shown on Map of Reedlands Unit 2B (9 RM 76)



CORNER TYPE

Government Corner Control
Meander Property
Rancho Other

COORDINATES(Optional)

N. _____
E. _____
Zone _____ NAD27 NAD83
NAD83 Epoch _____
Elevation _____
Vert. Datum: NGVD 29 NADV88
Meas. Units: Metric Imperial

Date of Survey March, 2013

Corner- Left as found Found and tagged Established Reestablished Rebuilt

Identification and type of corner found: Evidence used to identify or procedure used to establish or reestablish the corner:

Found standard street monuments per Map of Reedlands, Unit 2B, Recorded in Book 9 of Maps, at Page 76, Marin County Records, See page 2

A description of the physical condition of the monument as found and as set or reset: Set 3/4" iron pipe and plastic plug, "LS 5814" as shown on page 2

SURVEYOR'S STATEMENT

This Corner Record was prepared by me or under my direction in conformance with the Land Surveyor's Act on March 2013

Signed *William E. Schroeder* P.L.S. or R.C.E. No.: LS 5814

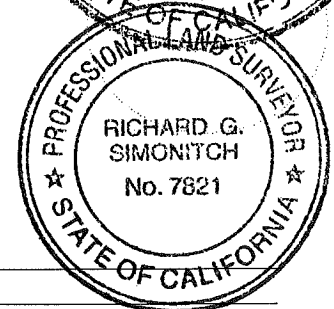
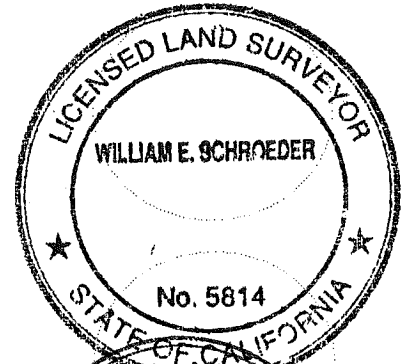
COUNTY SURVEYOR'S STATEMENT

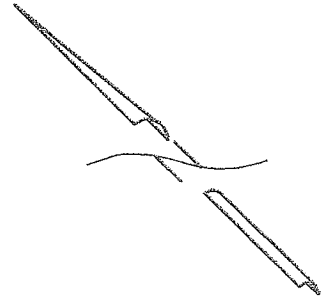
This Corner Record was received MAY 16, 2013 and examined
and filed JUNE 25, 2013

Signed *Richard G. Simonitch* P.L.S. or R.C.E. No.: 7821

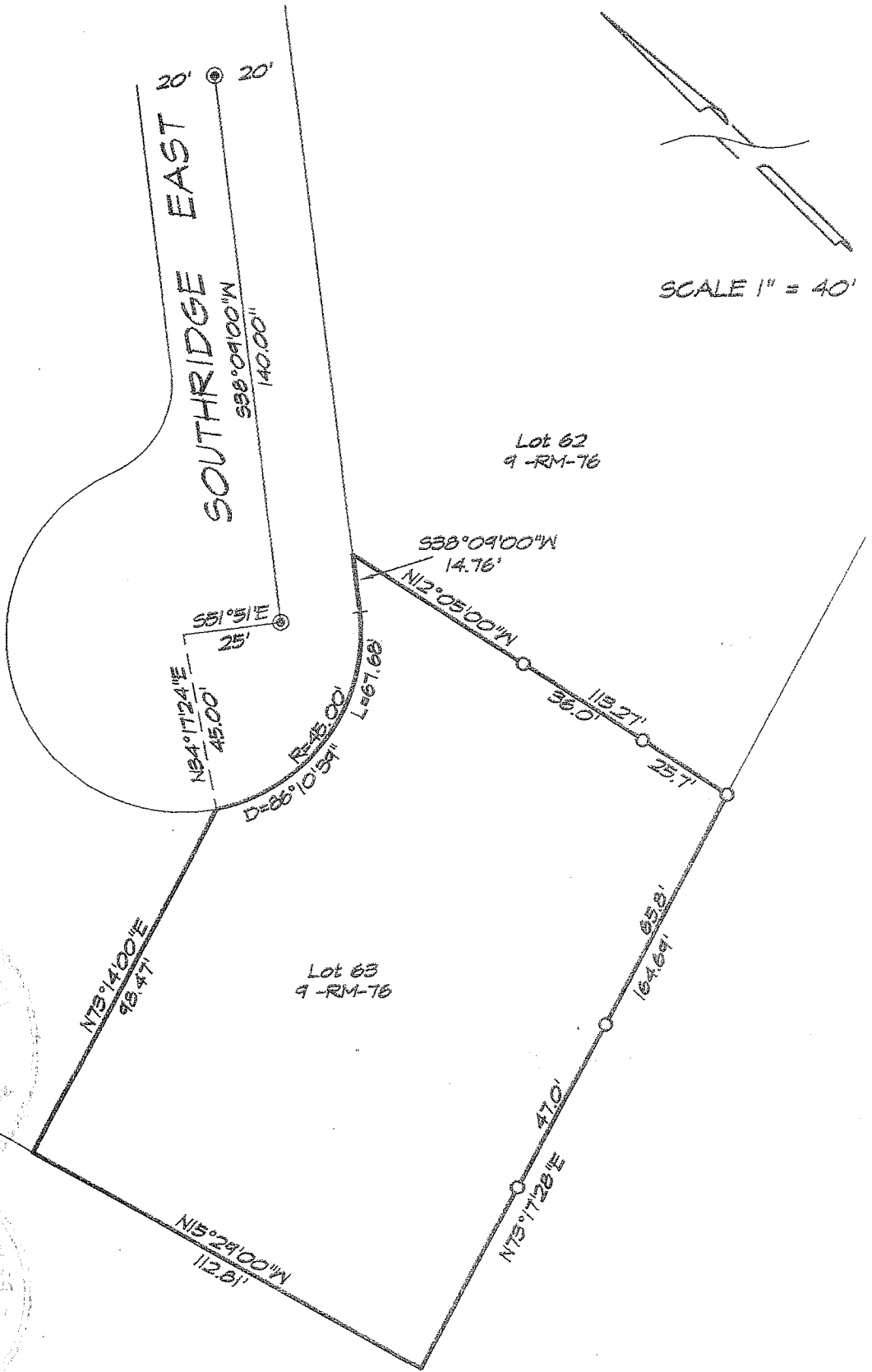
Title DEPUTY CO. SURVEYOR

County Surveyor's Comment _____





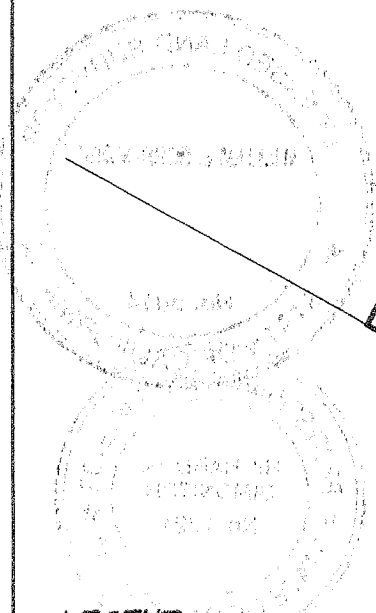
SCALE 1" = 40'



Lot 64
9-RM-76

Lot 62
9-RM-76

Lot 63
9-RM-76



LEGEND

- ⊙ = Found Standard Street Monument
- = Set 3/4" Iron Pipe with plastic cap
"LS 5814"