

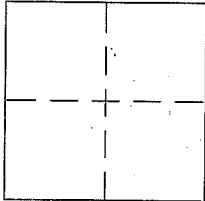
CORNER RECORD

Document Number A.P.N. 034-223-05

City of TIBURON

County of MARIN, California

Brief Legal Description LOT 52 AS SHOWN ON THE "MAP OF THE REEDLANDS, UNIT 2-B"
FILED APRIL 30, 1957 IN MAP BOOK 9 AT PAGE 76, MARIN COUNTY RECORDS



CORNER TYPE

Government Corner Control
Meander Property
Rancho Other
Date of Survey 10/28/2014

COORDINATES (Optional)

N. _____
E. _____
Zone _____ NAD27 NAD83
NAD83 Epoch _____
Elev. _____
Vert. Datum: NGVD29 NAVD88
Meas. Units: Metric Imperial

Corner - Left as found Found and tagged Established Reestablished Rebuilt

Identification and type of corner found: Evidence used to identify or procedure used to establish or reestablish the corner:
SEE PAGE 2

A description of the physical condition of the monument as found and as set or reset:
SEE PAGE 2

SURVEYOR'S STATEMENT

This Corner Record was prepared by me or under my direction in conformance with
the Land Surveyor's Act on 4/12 2015

Signed [Signature] P.L.S. or R.C.E. No. 6784



COUNTY SURVEYOR'S STATEMENT

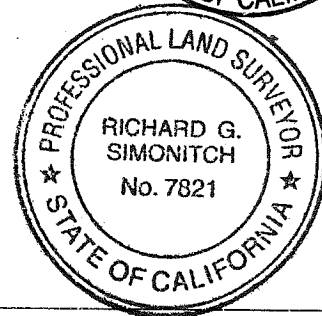
This Corner Record was received FEB 12, 2015

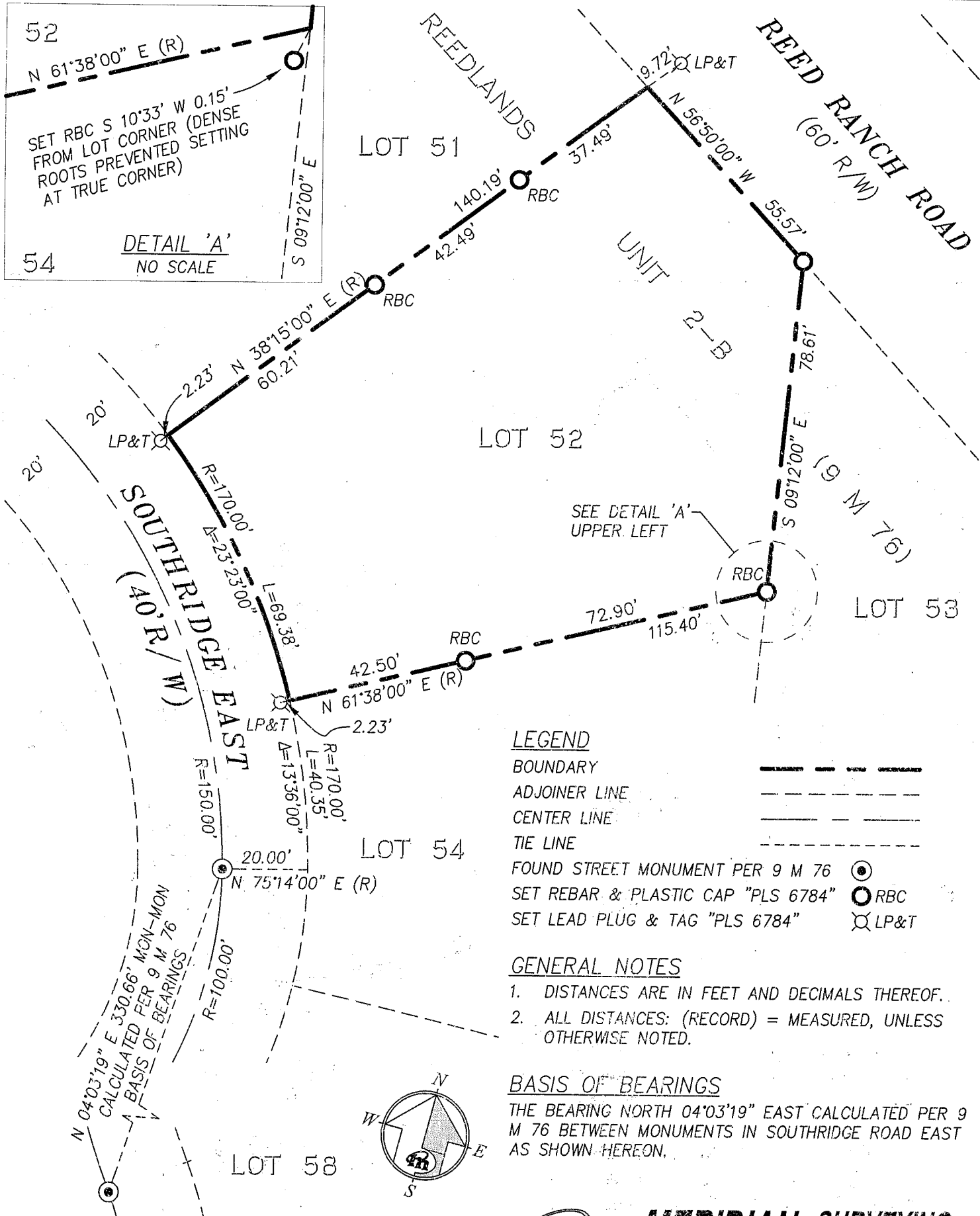
and examined and filed MAY 8th 2015

Signed [Signature] P.L.S. or R.C.E. No. 7821

Title DEPUTY

County Surveyor's Comment _____





52

N 61°38'00" E (R)

SET RBC S 10°33' W 0.15'
FROM LOT CORNER (DENSE
ROOTS PREVENTED SETTING
AT TRUE CORNER)

54 DETAIL 'A'
NO SCALE

LOT 51

REEDLANDS

REED RANCH ROAD
(60' R/W)

UNIT 2-B

LOT 52

LOT 53

SOUTHRIDGE EAST
(40' R/W)

LOT 54

LOT 58

LEGEND

- BOUNDARY
- ADJOINER LINE
- CENTER LINE
- TIE LINE
- FOUND STREET MONUMENT PER 9 M 76
- SET REBAR & PLASTIC CAP "PLS 6784"
- SET LEAD PLUG & TAG "PLS 6784"

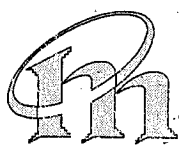
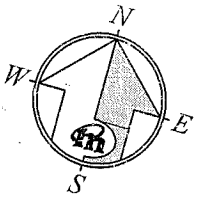
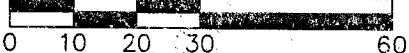
GENERAL NOTES

1. DISTANCES ARE IN FEET AND DECIMALS THEREOF.
2. ALL DISTANCES: (RECORD) = MEASURED, UNLESS OTHERWISE NOTED.

BASIS OF BEARINGS

THE BEARING NORTH 04°03'19" EAST CALCULATED PER 9 M 76 BETWEEN MONUMENTS IN SOUTHRIDGE ROAD EAST AS SHOWN HEREON.

SCALE: 1" = 30'



MERIDIAN SURVEYING ENGINEERING, INC.

2958 VAN NESS AVE SAN FRANCISCO, CA 94109 (415) 440-4131
777 GRAND AVE #202 SAN RAFAEL, CA 94901 (415) 456-5450