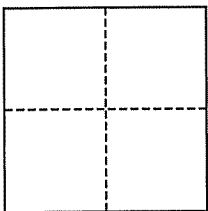


**CORNER RECORD**

City of Tiburon

Document Number 034-221-03  
County of Marin, California

Brief Legal Description Lot 21, 9 RM 68



**CORNER TYPE**

Government Corner  Control   
Meander  Property   
Rancho  Other   
Date of Survey June 3, 2011

**COORDINATES (Optional)**

N. \_\_\_\_\_  
E. \_\_\_\_\_  
Zone \_\_\_\_\_ NAD27  NAD83   
NAD83 Epoch \_\_\_\_\_  
Elev. \_\_\_\_\_  
Vert. Datum: NGVD29  NAVD88   
Meas. Units: Metric  Imperial

**Corner-** Left as found  Found and tagged  Established  Reestablished  Rebuilt

Identification and type of corner found: Evidence used to identify or procedure used to establish or reestablish the corner:  
Found Standard Street Monuments in Terrace Court per 9 RM 68

A description of the physical condition of the monument as found and as set or reset: Set 3/4" Iron Pipe w/Plug RCE 30465 on street front Property Corners and 1' from Southern Property Corner along Eastern side line. Set Nail and Tag RCE 30465, 1' from rear Western Property Corner along Northwestern side line. Set multiple Hub & Tack along rear & side property lines & along side 6' and rear 22.7' setbacks. Also set a Nail & Flagging along Western side line.

**SURVEYOR'S STATEMENT**

This corner Record was prepared by me or under my direction in conformance with the Land Surveyor's Act on July 7, 2011

Signed [Signature] P.L.S. or R.C.E. No. 30465



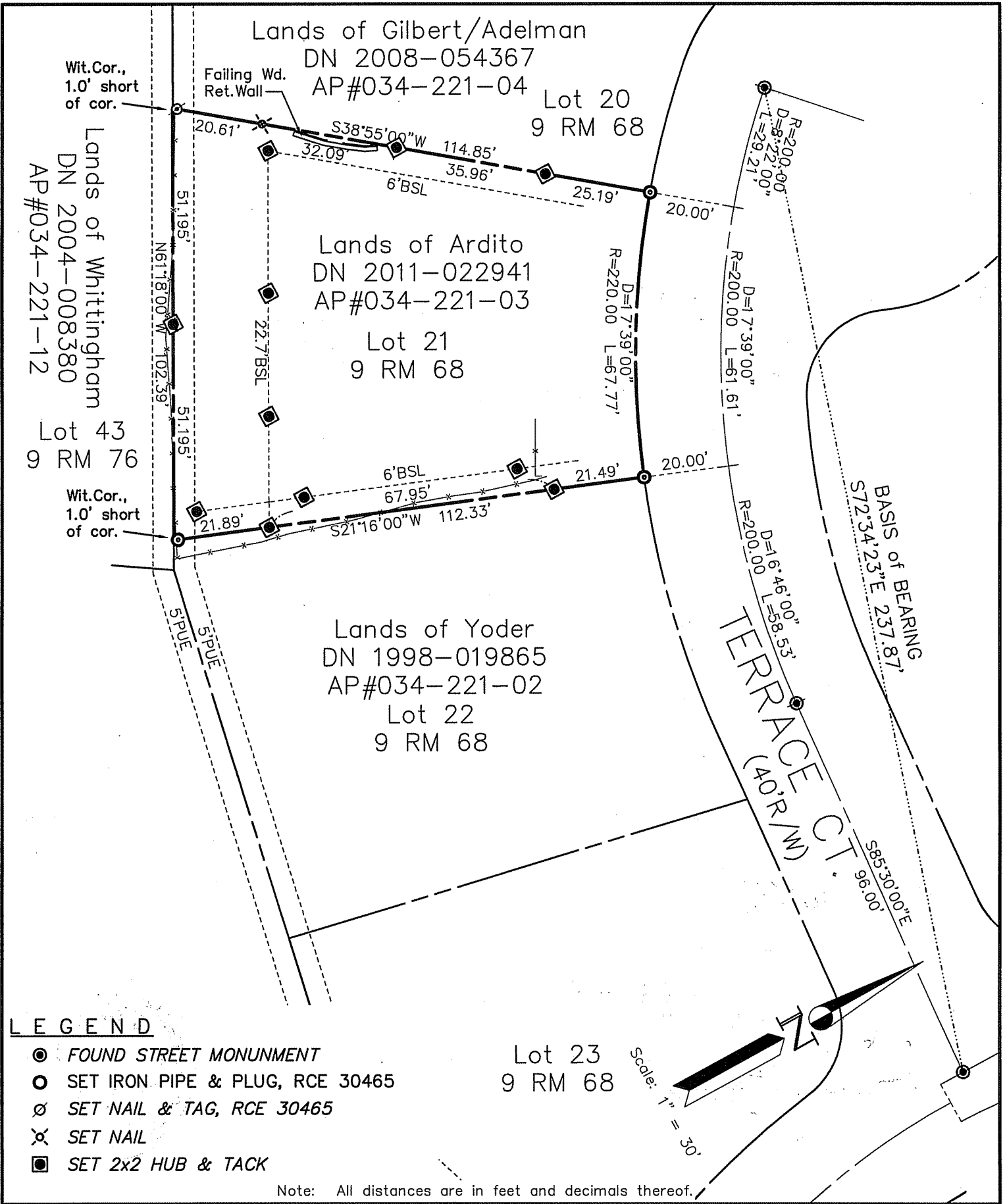
**COUNTY SURVEYOR'S STATEMENT**

This Corner Record was received JULY 11, 2011  
and examined and filed JULY 13, 2011

Signed [Signature] P.L.S. or R.C.E. No. 7128  
Title COUNTY SURVEYOR



**County Surveyor's Comment** \_\_\_\_\_



SHEET	1	OF	1
SCALE:	1" = 30'	DESIGN:	PR
DATE:	June 2011	DRAWN:	PR
FILE:	2011-055	CHECKED:	J.L.H

2011-055\DWG\11-055-BASE,COR-REC

**J.L. ENGINEERING**  
CIVIL ENGINEERS-LAND SURVEYORS  
1539 4th ST., SAN RAFAEL, CA. 94901 (415) 457-6647

**Corner Record**  
Lands of Ardito/Taubman - 37 Terrace Ct.  
APN 034-221-03, Tiburon, Marin County, CA