

CORNER RECORD

Document Number A.P.# 034-202-04

City of TOWN OF TIBURON

County of MARIN, California

Brief Legal Description LOT 11 7 R.M. 90

CORNER TYPE

Government Corner Control
 Meander Property
 Rancho Other
 Date of Survey MARCH 19, 2002

COORDINATES (Optional)

N. _____
 E. _____
 Zone _____ NAD27 NAD83
 NAD83 Epoch _____
 Elev _____
 Vert. Datum: NGVD29 NAVD88
 Meas. Units: Metric Imperial

Corner- Left as found Found and tagged Established Reestablished Rebuilt

Identification and type of corner found: Evidence used to identify or procedure used to establish or reestablish the corner:

ESTABLISHED THE PROPERTY CORNER FROM THE MONUMENTS PER 7 R.M. 90.

(SEE SHEET 2)

A description of the physical condition of the monument as found and as set or reset:

1. FOUND 3/4" REBAR AND CAP (UNREADABLE).

2. SET NAIL AND TAG L.S. 4694

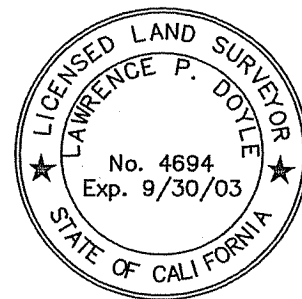
(SEE SHEET 2)

SURVEYOR'S STATEMENT

This Corner Record was prepared by me or under my direction in conformance with

the Land Surveyor's Act on MARCH 20 2002

Signed Lawrence P. Doyle P.L.S. or R.C.E. No. P.L.S. 4694



COUNTY SURVEYOR'S STATEMENT

This Corner Record was received JULY 5, 2002

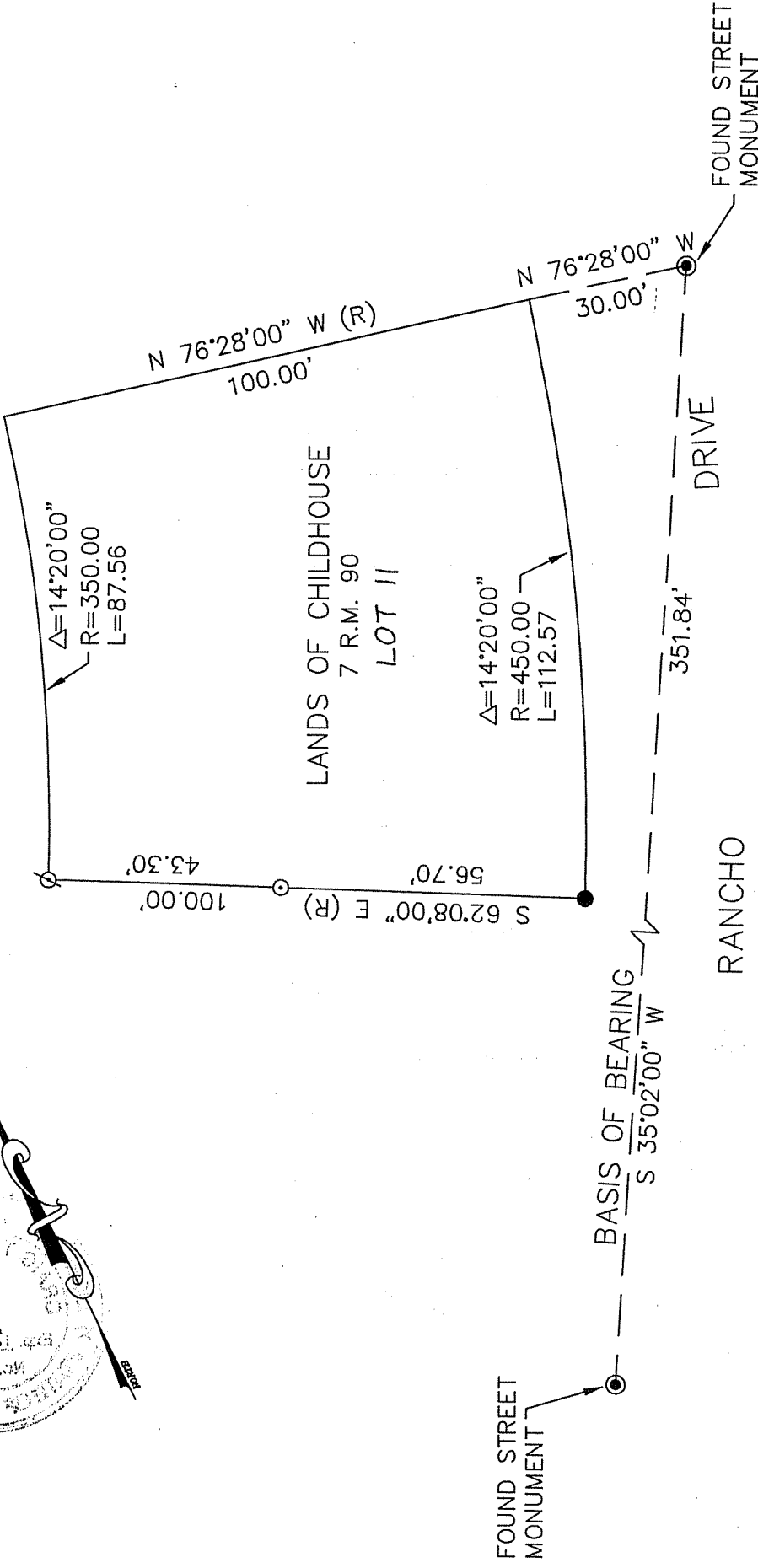
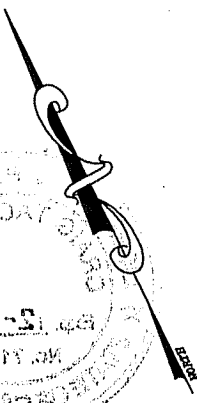
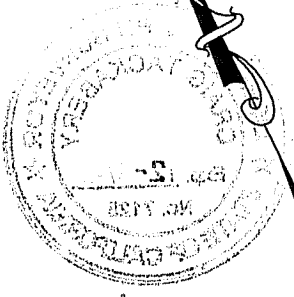
and examined and filed JULY 9, 2002

Signed Craig Tackabery P.L.S. or R.C.E. No. 7128

Title DEPUTY

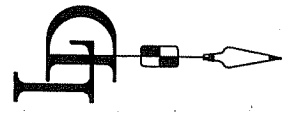


County Surveyor's Comment _____



LEGEND

- SET 3/4" PIPE AND PLUG L.S. 4694
- ∅ SET NAIL AND TAG L.S. 4694
- FOUND 3/4" REBAR AND CAP (UNREADABLE)



TIBURON		EXHIBIT "A"	
LOT 11 PER 7 R.M. 90		MARIN COUNTY CALIFORNIA	
SCALE: 1" = 30'	DATE: 3/20/02	DRAWN BY: SHEET 2 OF 2	
LAWRENCE P. DOYLE		LAND SURVEYOR/CIVIL ENGINEER	
P.O. BOX 1609 MILL VALLEY CA 94942 (415-388-9585)		DRAWING NO. 1031-02	