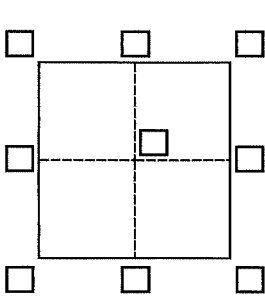


# CORNER RECORD

Agency Index 21-145  
Document Number APN 034-172-12

City of Tiburon County of Marin, California  
Brief Legal Description Lot 112, 7 RM 82



### CORNER TYPE

- Government Corner  Control
- Meander  Property
- Rancho  Other

Date of Survey April 30, 2021

### COORDINATES (Optional)

- N. \_\_\_\_\_ E. \_\_\_\_\_
- Elevation \_\_\_\_\_
- Units Metric  U.S. Survey Foot
- Horizontal Datum \_\_\_\_\_
- Zone \_\_\_\_\_ Epoch Date \_\_\_\_\_
- Vertical Datum \_\_\_\_\_
- Complies with Public Resources Code §§8801-8819
- Complies with Public Resources Code §§8890-8902

- PLS Act Ref.:  8765(d)  8771  8773  Other:
- Corner/Monument:  Left as found  Established  Rebuilt  Pre-Construction  
 Found and tagged  Reestablished  Referenced  Post-Construction

Narrative of corner identified and monument as found, set, reset, replaced, or removed:  
 See sheet #2 for description(s):

RECEIVED

JUL 30 2021

County of Marin  
Department of Public Works

### SURVEYOR'S STATEMENT

This Corner Record was prepared by me or under my direction in conformance with  
the Professional Land Surveyors' Act on July 24, 2021

Signed [Signature] P.L.S. or R.C.E. No. L.S. 6330



### COUNTY SURVEYOR'S STATEMENT

This Corner Record was received 7.30.21

and examined and filed 1.31.22

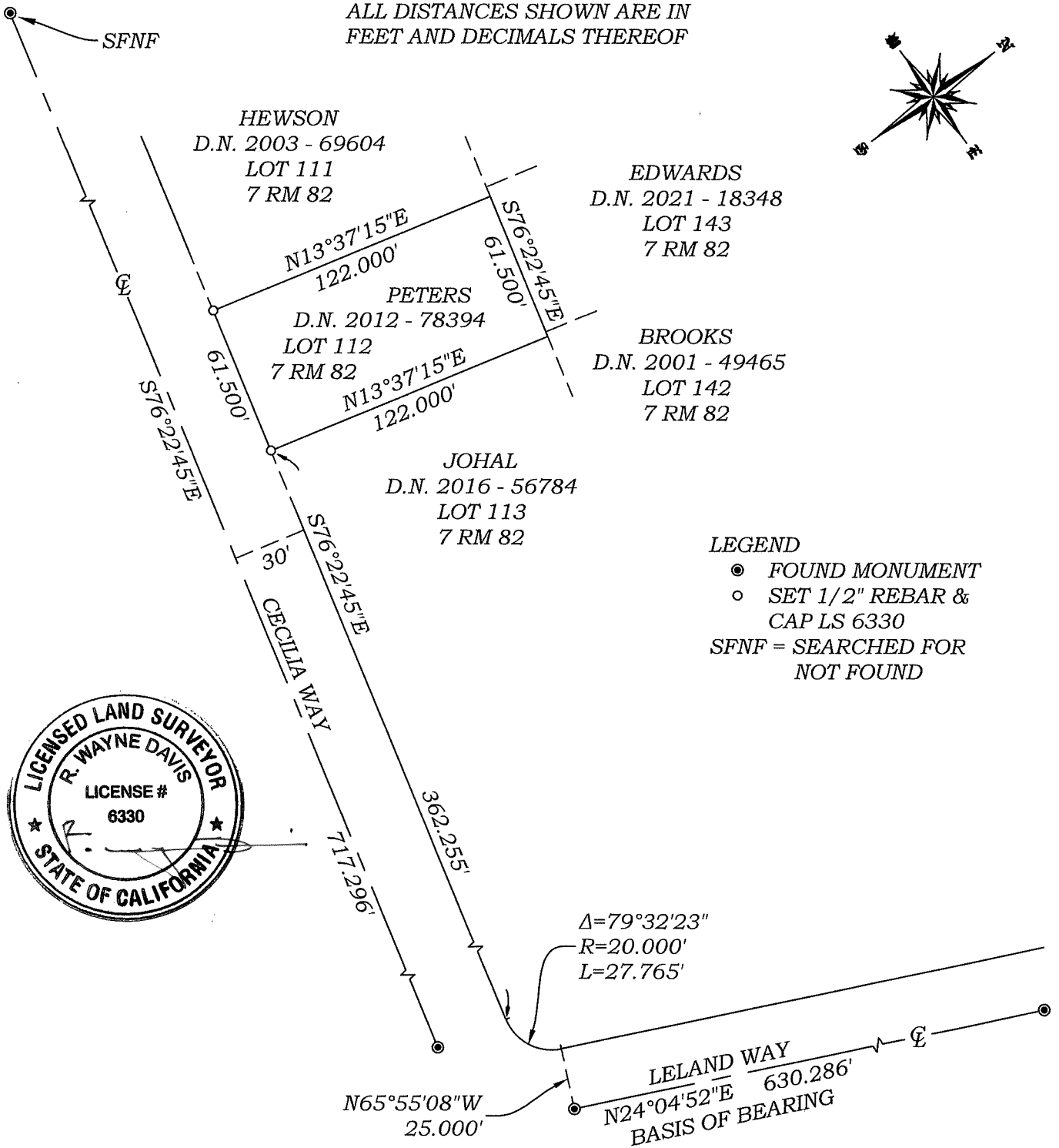
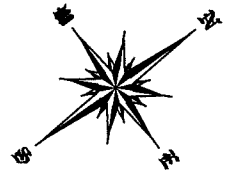
Signed [Signature] P.L.S. or R.C.E. No. 9292

Title DEPUTY

County Surveyor's Comment



ALL DISTANCES SHOWN ARE IN FEET AND DECIMALS THEREOF



APN 034 - 172 - 12



R.W. DAVIS & ASSOCIATES, INC.  
LAND SURVEYORS

45 Leveroni Court  
Novato CA 94949  
L.S. 6330

Tel. (415) 883-9099  
Email: rwdavis@rwdavis-survey.com

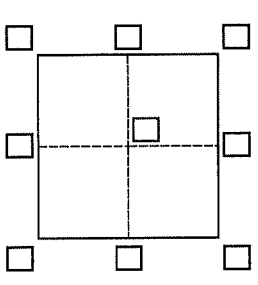
© 2013

Rev.	Date: 07-24-21
Job No. 572-002	Scale: 1" = 60'
CORNER RECORD LANDS OF PETERS LOT 112, 7 RM 82 TIBURON MARIN COUNTY CALIFORNIA	

# CORNER RECORD

Agency Index 21-144  
 Document Number AP#165-171-37

City of San Rafael County of \_\_\_\_\_, California  
 Brief Legal Description Lot 187, 13 RM 65



### CORNER TYPE

- Government Corner  Control   
 Meander  Property   
 Rancho  Other

Date of Survey \_\_\_\_\_

### COORDINATES (Optional)

- N. \_\_\_\_\_ E. \_\_\_\_\_  
 Elevation \_\_\_\_\_  
 Units Metric  U.S. Survey Foot   
 Horizontal Datum \_\_\_\_\_  
 Zone \_\_\_\_\_ Epoch Date \_\_\_\_\_  
 Vertical Datum \_\_\_\_\_  
 Complies with Public Resources Code §§8801-8819  
 Complies with Public Resources Code §§8890-8902

PLS Act Ref.:  8765(d)  8771  8773  Other:  
 Corner/Monument:  Left as found  Established  Rebuilt  Pre-Construction  
 Found and tagged  Reestablished  Referenced  Post-Construction

Narrative of corner identified and monument as found, set, reset, replaced, or removed:  
 See sheet #2 for description(s):

All points found and set per 13 RM 65. Displayed easements are also per 13 RM 65.

### SURVEYOR'S STATEMENT

This Corner Record was prepared by me or under my direction in conformance with  
 the Professional Land Surveyors' Act on July 8, 2021  
 Signed [Signature] P.L.S. or R.C.E. No. 30465



### COUNTY SURVEYOR'S STATEMENT

This Corner Record was received 7-21-21  
 and examined and filed 01-31-22  
 Signed [Signature] P.L.S. or R.C.E. No. 9292  
 Title DEPUTY



County Surveyor's Comment \_\_\_\_\_

Lands of Lau&Fong  
DN 2012-053985

Lot 123  
13 RM 26

Lands of Walsh Tr.  
DN 2016-005232

Lot 124  
13 RM 26

Lands of Garbarino Tr.  
DN 2003-080809

Lot 125  
13 RM 26

Lands of Towslee Tr.  
DN 2013-074987

Lot 126  
13 RM 26

Lands of  
Hassan&Ardestani  
DN 2016-044604

Lot 187  
13 RM 65

Lands of Busse Tr.  
DN 1995-052890

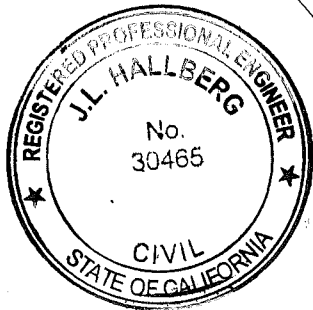
Lot 127  
13 RM 26

Lands of Mentis  
DN 1982-038886

Lot 186  
13 RM 65

LAS GALLINAS AVE. (100'R/W)

PARK RIDGE RD.  
(50'R/W)



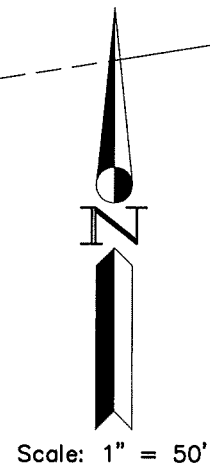
Set on Curb  
BASIS OF BEARINGS  
N06°14'00"W 128.04'

Set in Conc.  
Valley Gutter

LEGEND

- FOUND STRT MONUMENT, PER 13 RM 65
- SET IP & PLUG, RCE 30465
- ⊗ SET REBAR & CAP, RCE 30465
- ∅ SET NAIL & TAG, RCE 30465

Note: All distances are in feet and decimals thereof.



SHEET	1	OF	1
SCALE:	1" = 50'	DESIGN:	EDL
DATE:	Jul 2021	DRAWN:	EDL
FILE:	2021-040	CHECKED:	J.L.H

2021-040\DWG\2021-040-ROS,COR-REC

**J.L. ENGINEERING**  
**CIVIL ENGINEERS-LAND SURVEYORS**  
 1539 4th ST., SAN RAFAEL, CA. 94901 (415) 457-6647

# Corner Record

Lands of Hassan&Ardestani - 11 Park Ridge Rd.  
 APN 165-171-37, San Rafael, Marin County, CA