

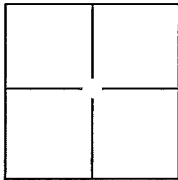
# CORNER RECORD

Document Number APN 034-171-05

City of Tiburon

County of Marin, California

Brief Legal Description Lot 104 - 7 RM 82, Marin County Records



### CORNER TYPE

Government Corner  Control   
 Meander  Property   
 Rancho  Other

Date of Survey August 5, 2016

### COORDINATES(Optional)

N. \_\_\_\_\_  
 E. \_\_\_\_\_  
 Zone \_\_\_\_\_ NAD27  NAD83   
 NAD83 Epoch \_\_\_\_\_  
 Elev. \_\_\_\_\_  
 Vert. Datum: NGVD29  NADV88   
 Meas. Units: Metric  Imperial

Corner - Left as found  Found and tagged  Established  Reestablished  Rebuilt

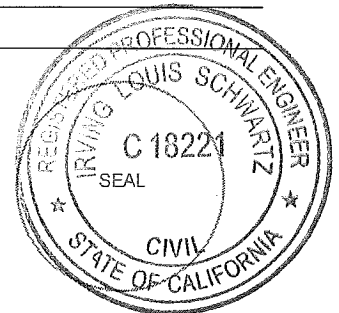
Identification and type of corner found: Evidence used to identify or procedure used to establish or reestablish the corner:  
Found (1) Nail and Tag, illegible, and found (1) Nail in Concrete, both in standard monument wells along the centerline of Cecilia Way as shown on 7 RM 82. Measured distance between of 717.25', record map shows a distance of 717.30'. Held as Basis of Bearings for survey, taken as S76°22'45" E.

A description of the physical condition of the monument as found and as set or reset: Found record monuments(2) in standard monument wells, in good condition. Set 3/4" iron pipe(3) with yellow cap stamped with "RCE 18221" and Set 1/2" rebar(1) with yellow cap stamped with "RCE 18221" on property lines as shown on Exhibit A, Page 2 of 2.

### SURVEYOR'S STATEMENT

This Corner Record was prepared by me or under my direction in conformance with the Land Surveyor's Act on August 5, 2016.

Signed [Signature] P.L.S. or R.C.E. No.: 18221



### COUNTY SURVEYOR'S STATEMENT

This Corner Record was received August 8, 2016 and examined and filed October 14, 2016.

Signed [Signature] P.L.S. or R.C.E. No.: 7821

Title County Surveyor

County Surveyor's Comment \_\_\_\_\_

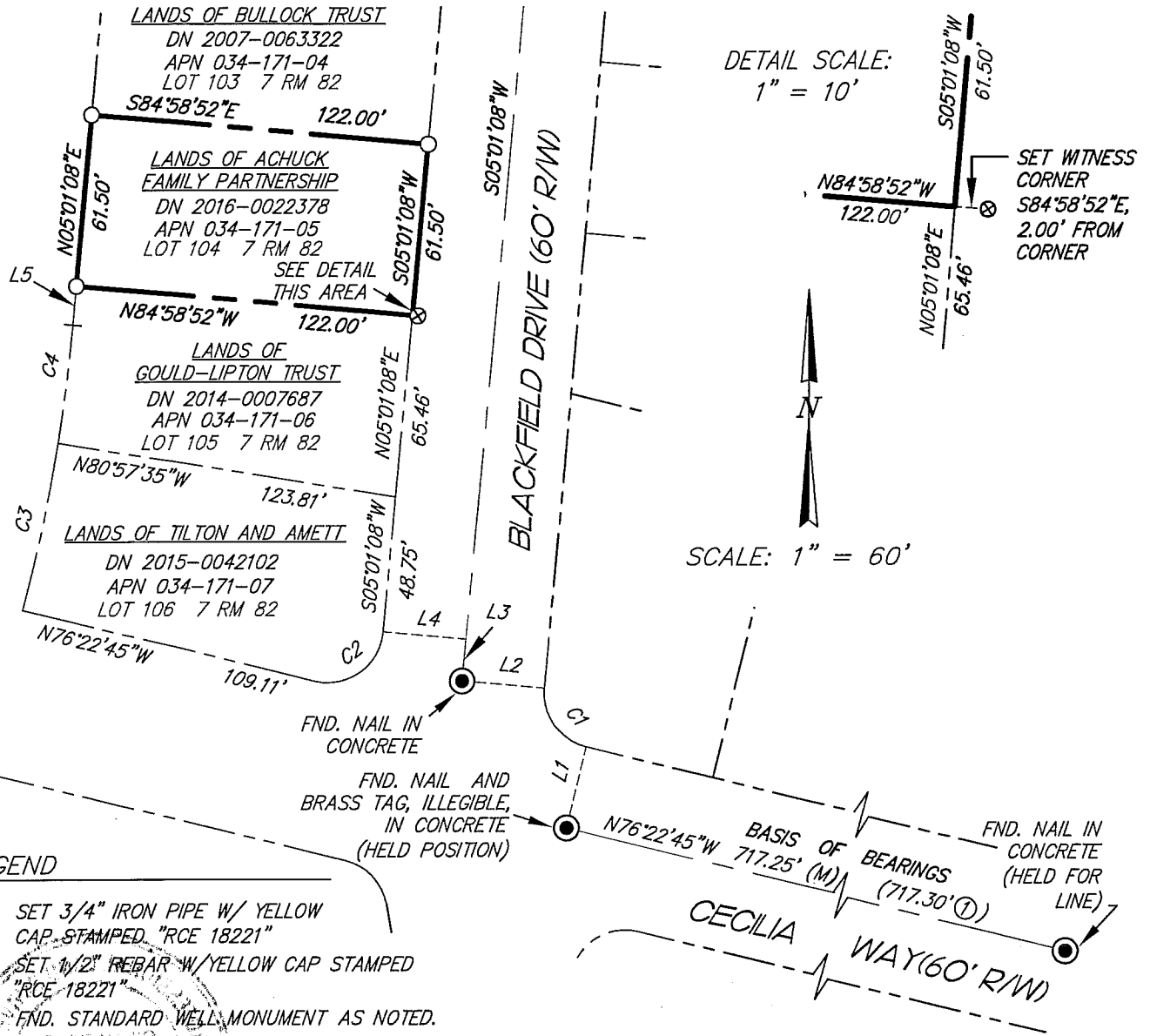




**ILS ASSOCIATES, INC.®**  
 Civil Engineering & Land Surveying  
 79 Galli Drive, Suite A  
 Novato, Ca 94949-5717  
 (415)883-9200 FAX (415)883-2763

DRAWN: GG	JOB NO: 9106
DATE: 8/05/2016	PAGE NO. 2 OF 2

# EXHIBIT A



### LEGEND

- SET 3/4" IRON PIPE W/ YELLOW CAP, STAMPED "RCE 18221"
- ⊗ SET 1/2" REBAR W/ YELLOW CAP STAMPED "RCE 18221"
- FND. STANDARD WELL MONUMENT AS NOTED.
- FND. FOUND
- (R) RADIAL LINE
- PTN. PORTION OF
- (M) MEASURED
- DN DOCUMENT NUMBER
- APN ASSESSOR'S PARCEL NUMBER
- ① DATA PER REFERENCE AS NOTED

### REFERENCES

- ① MAP OF BEL AIRE ESTATES 7 RM 82

### SURVEY TIE LINE TABLE

NO.	BEARING	DISTANCE
L1	N13°37'15"E	30.0'
L2	S84°58'52"E	30.0'
L3	N05°01'08"E	15.14'
L4	N84°58'52"W	30.0'
L5	N05°01'08"E	14.0'

### CURVE DATA

NO.	RADIUS	DELTA	LENGTH
C1	20'	81°23'53"	28.41'
C2	20'	98°36'11"	34.42'
C3	610'	05°45'49"	61.36'
C4	610'	04°01'17"	42.81'

### NOTES

1. ALL DISTANCES ARE IN FEET OR DECIMALS THEREOF.
2. ALL REFERENCED MAPS AND DEEDS ARE FROM MARIN COUNTY RECORDS.