

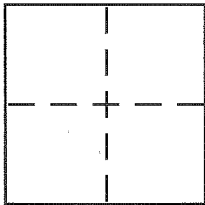
CORNER RECORD

Document Number 034-122-16

City of Tiburon

County of Marin, California

Brief Legal Description LOT 63 per 7 RM 82, Marin County



CORNER TYPE

Government Corner Control
Meander Property
Rancho Other
Date of Survey 12/5/14

COORDINATES (Optional)

N. _____
E. _____
Zone _____ NAD27 NAD83
NAD83 Epoch _____
Elev. _____
Vert. Datum: NGVD29 NAVD88
Meas. Units: Metric Imperial

Corner - Left as found Found and tagged Established Reestablished Rebuilt

Identification and type of corner found: Evidence used to identify or procedure used to establish or reestablish the corner:

see sheet 2

A description of the physical condition of the monument as found and as set or reset:

see sheet 2

SURVEYOR'S STATEMENT

This Corner Record was prepared by me or under my direction in conformance with the Land Surveyor's Act on 12/30 2014

Signed [Signature] P.L.S or R.C.E. No. 6784



COUNTY SURVEYOR'S STATEMENT

This Corner Record was received Jan 5th 2015
and examined and filed MARCH 16, 2015

Signed [Signature] P.L.S or R.C.E. No. 7821

Title Deputy



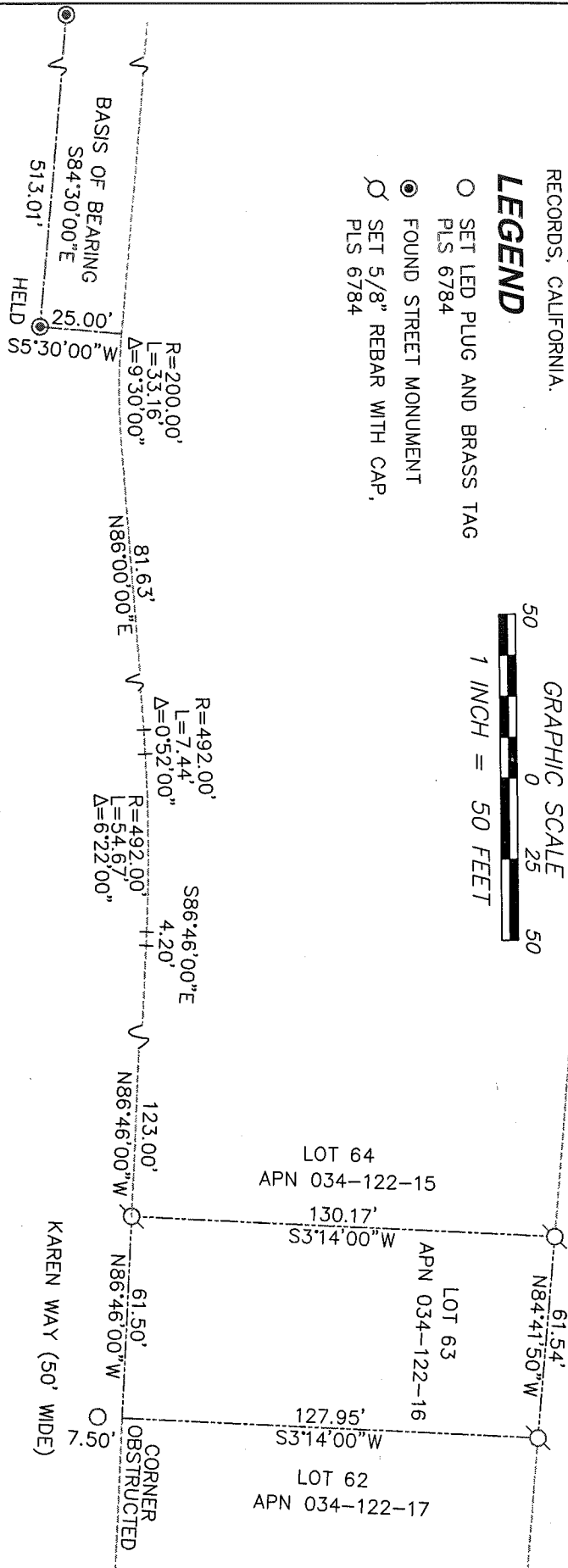
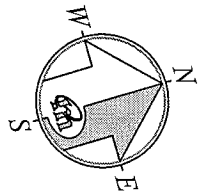
County Surveyor's Comment _____

REFERENCE

"MAP OF BEL AIRE ESTATES" FILED FOR RECORD APRIL 8, 1953 IN VOLUME 7 OF MAPS, AT PAGE 82, MARIN COUNTY RECORDS, CALIFORNIA.

LEGEND

- SET LED PLUG AND BRASS TAG PLS 6784
- FOUND STREET MONUMENT
- SET 5/8" REBAR WITH CAP, PLS 6784



NOTE:
RECORD=MEASURED.

NOTE

THE TWO STREET MONUMENTS IN THE FRONT OF THE PROPERTY WERE OBSTRUCTED. ONE OF THEM HAD A PIN MISSING AND THE OTHER WAS COVERED.

CORNER RECORD

MERIDIAN SURVEYING, INC.
CORNER RECORD

2958 VAN NESS AVENUE (14232) 777 GRAND AVENUE, #202
SAN FRANCISCO, CA 94109 SAN RAFAEL, CA 94901
(415) 440-4131 info@meridiansurvey.com (415) 456-5450