

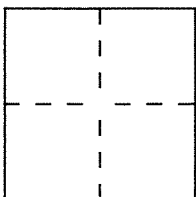
# CORNER RECORD

Document Number A.P.# 34-122-11

City of TIBURON

County of MARIN, California

Brief Legal Description LOT 68. "BEL AIRE ESTATES" RM BOOK 7, PAGE 82



### CORNER TYPE

### COORDINATES (Optional)

Government Corner  Control   
 Meander  Property   
 Rancho  Other   
 Date of Survey \_\_\_\_\_

N. \_\_\_\_\_  
 E. \_\_\_\_\_  
 Zone \_\_\_\_\_ Datum \_\_\_\_\_  
 Elev. \_\_\_\_\_

Corner — Left as found  Found and tagged  Established  Reestablished  Rebuilt

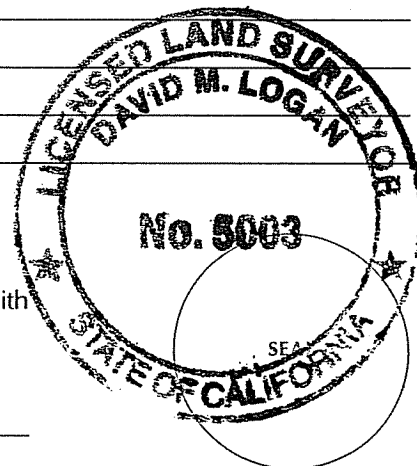
Identification and type of corner found: Evidence used to identify or procedure used to establish or reestablish the corner:  
See Sketch

A description of the physical condition of the monument as found and as set or reset:  
See Sketch

### SURVEYOR'S STATEMENT

This Corner Record was prepared by me or under my direction in conformance with the Land Surveyors' Act on June 26 19 98.

Signed D.M.S. L.S. or R.C.E. Number L.S. 5003



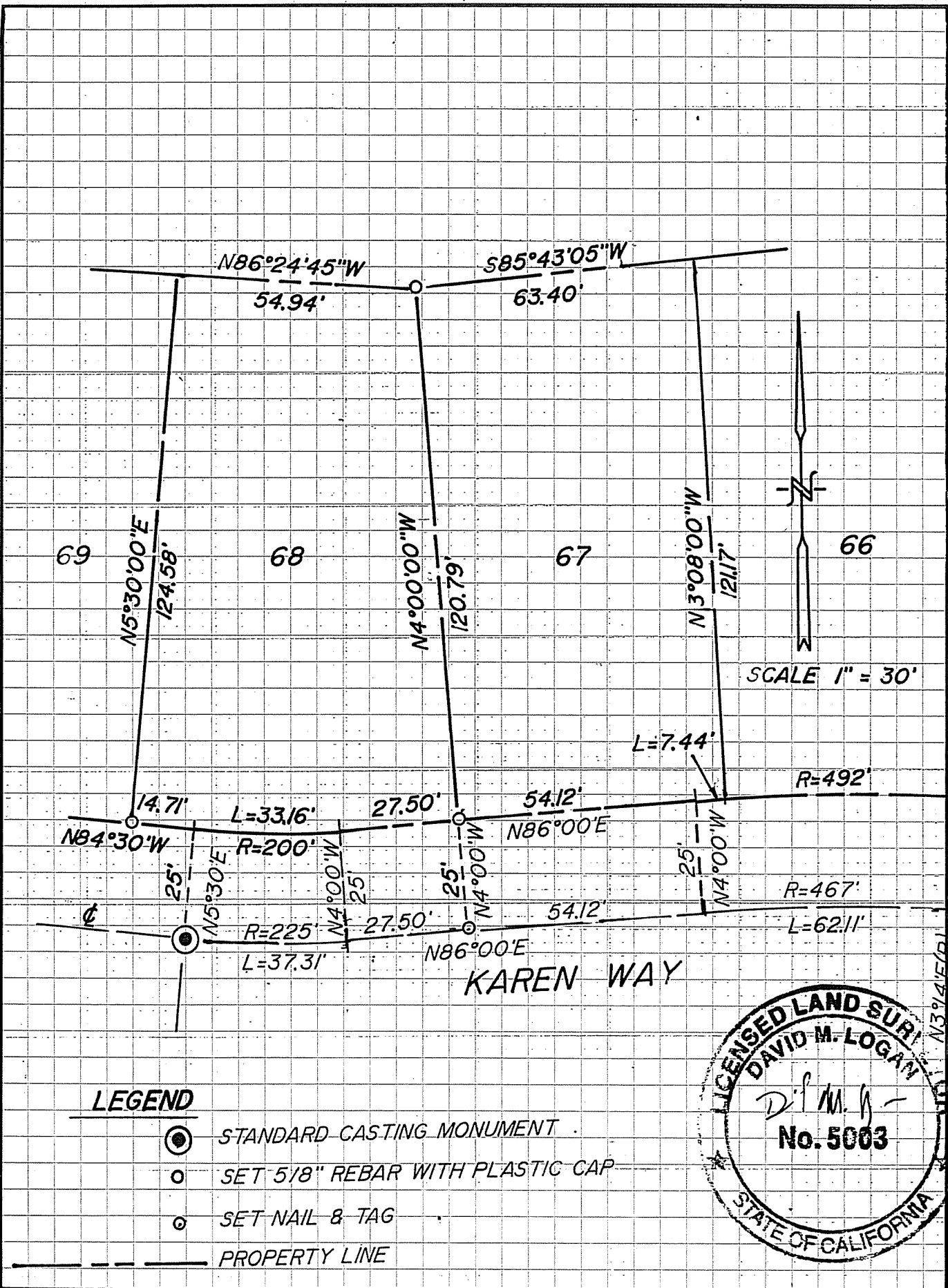
### COUNTY SURVEYOR'S STATEMENT

This Corner Record was received JULY 1 19 98 and examined and filed JULY 2 19 98.


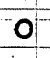


Signed John M. Woolley Title DEPUTY



County Surveyor's Comment \_\_\_\_\_



**LEGEND**

- 
 STANDARD CASTING MONUMENT
- 
 SET 5/8" REBAR WITH PLASTIC CAP
- 
 SET NAIL & TAG
- 
 PROPERTY LINE