

Lands of Waldman
Job #: 141576

CORNER RECORD

Assessor's Parcel Number 033-250-11

City of Mill Valley in County of Marin, California

Brief Legal Description: Lot 11, as shown upon that certain map entitled, "Map of Blithedale Highlands", filed for record October 2, 1990 in Volume 20 of Maps at Page 88, Marin County Records.



CORNER TYPE

COORDINATES (Optional)

Government Corner Control

Meander Property

Rancho Other

Date of Survey March 24, 2016

N _____

E _____

Zone _____ NAD27 NAD83

NAD 83 Epoch _____

Elev. _____

Vert. Datum: NGVD29 NAVD88

Meas. Units: Metric Imperial

Corner - Left as found Found and tagged Established Reestablished Rebuilt

Evidence used to identify or procedure used to establish or reestablish the corner:
See Page 2 of 2 for information

A description of the physical condition of the monument as found and as set or reset:
See Page 2 of 2 for information

SURVEYOR'S STATEMENT

This Corner Record was prepared by me or under my direction in conformance with

The Land Surveyor's Act on May 2, 2016.

Signed *Lawrence A. Stevens* P.L.S. 6649



COUNTY SURVEYOR'S STATEMENT

This Corner Record was received MAY 4, 2016

and examined and filed JULY 8, 2016

Signed *Richard G. Simonitch* P.L.S. or R.C.E. No. 7821

Title County Surveyor

County Surveyors' Comment _____

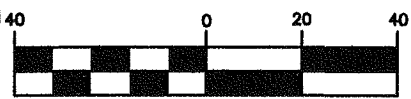


All distances shown are in feet and decimals thereof

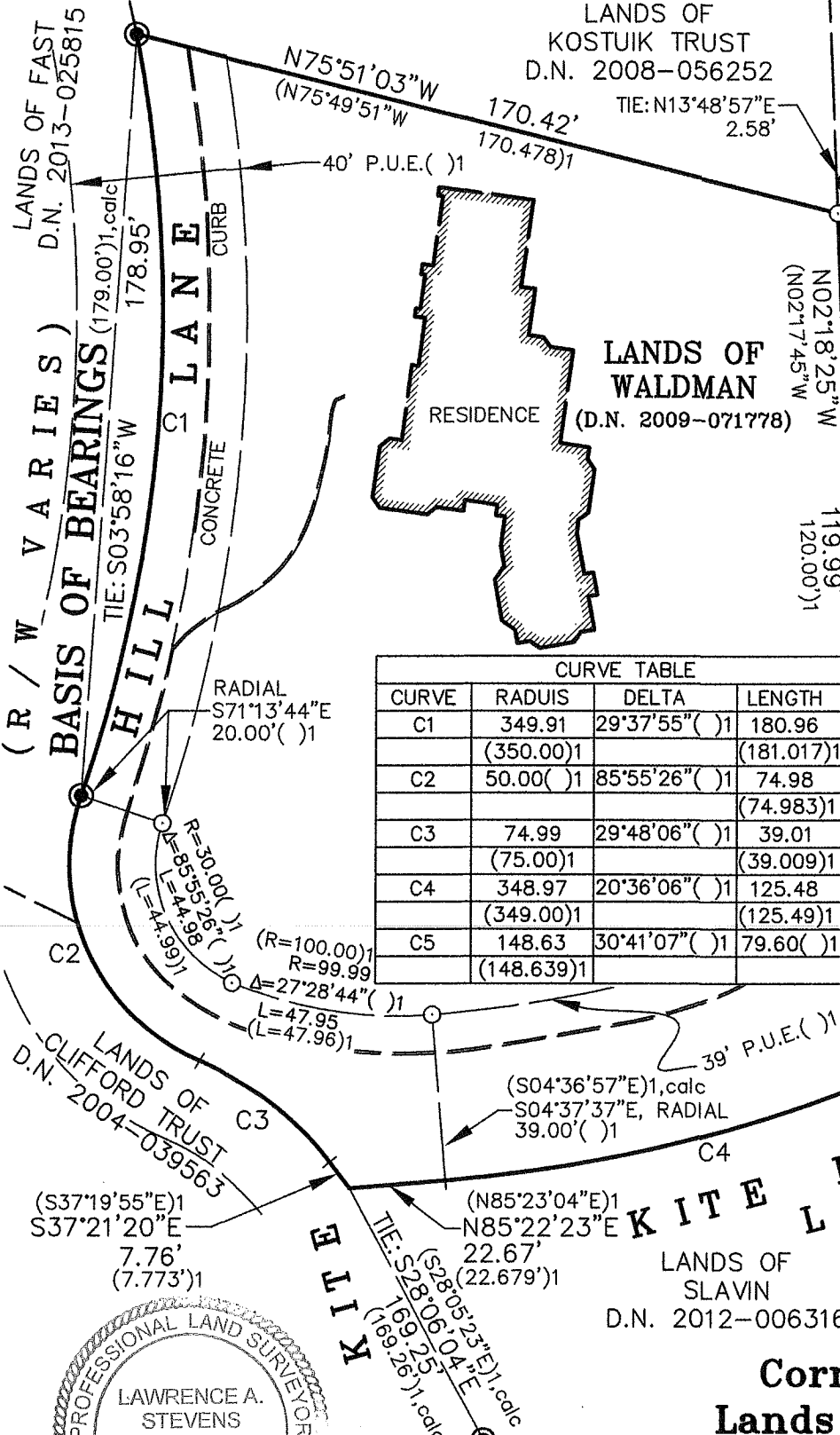
LEGEND

- Found 1/2" Rebar Yellow Plastic Plug Stamped, "PLS 4694" No Discovered Record
- ⊙ Found 2" Brass Disk Set in Concrete Stamped, "RCE 12510" Inside a Concrete Hand Hole
- Set 5/8" Rebar & 1 1/2" Aluminum Cap, with Punch, Stamped "LS 6649"

GRAPHIC SCALE

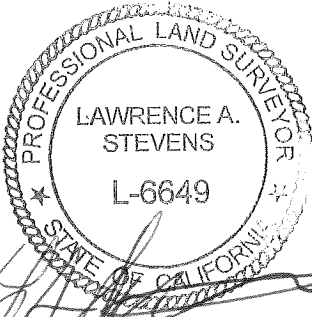


(IN FEET)



CURVE TABLE			
CURVE	RADIUS	DELTA	LENGTH
C1	349.91	29°37'55" () 1	180.96
	(350.00) 1		(181.017) 1
C2	50.00 () 1	85°55'26" () 1	74.98
			(74.983) 1
C3	74.99	29°48'06" () 1	39.01
	(75.00) 1		(39.009) 1
C4	348.97	20°36'06" () 1	125.48
	(349.00) 1		(125.49) 1
C5	148.63	30°41'07" () 1	79.60 () 1
	(148.639) 1		

C A M I N O A L T O (6 0 ' R / W)



Lawrence A. Stevens, PLS 6649

LANDS OF KOSTUIK TRUST
D.N. 2008-056252

LANDS OF WALDMAN
(D.N. 2009-071778)

LANDS OF SLAVIN
D.N. 2012-006316

Corner Record Lands of Waldman

(Lot 11, Volume 20 of Maps at Page 88, Marin County Records)
Mill Valley Marin County California
Scale: 1" = 40'
April 2016

L.A. Stevens & Associates, Inc.

Professional Land Surveyors * (415) 382-7713
7 Commercial Blvd., Suite 1 * Novato, CA 94949