

# CORNER RECORD

Agency Index

CR24-022

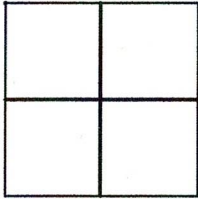
Document Number

**033-250-09**

City of MILL VALLEY

County of MARIN, California

Brief Legal Description A PORTION OF LOT 9, 20 RM 88 M.C.R.



### CORNER TYPE

- Government Corner  Control   
 Meander  Property   
 Rancho  Other

Date of Survey JANUARY 19, 2024

### COORDINATES (Optional)

N. \_\_\_\_\_ E. \_\_\_\_\_  
 Elevation \_\_\_\_\_  
 Units Metric  U.S. Survey Foot   
 Horizontal Datum \_\_\_\_\_  
 Zone \_\_\_\_\_ Epoch Date \_\_\_\_\_  
 Vertical Datum \_\_\_\_\_

- Complies with Public Resources Code §§8801-8819  
 Complies with Public Resources Code §§8890-8902

- PLS Act Ref:  8765(d)  8771  8773  Other:  
 Corner/  
 Monument:  Left as found  Established  Rebuilt  Pre-Construction  
 Found and tagged  Reestablished  Referenced  Post-Construction

Narrative of corner identified and monument as found, set, reset, replaced, or removed:  
 See sheet #2 for description (s):

### SURVEYOR'S STATEMENT

This Corner Record was prepared by me or under my direction in conformance with  
 the Professional Land Surveyors' Act on February 8, 2024

Signed [Signature] P.L.S. or R.C.E. No. 6649



### COUNTY SURVEYOR'S STATEMENT

This Corner Record was received February 16,  
 and examined and filed February 28, 2024

Signed [Signature] P.L.S. [Redacted] No. 8176

Title County Surveyor



County Surveyor's Comment \_\_\_\_\_

All measured distances are in scaled feet and decimals thereof. Multiply measured distances by 1.00006518 to obtain ground distances.

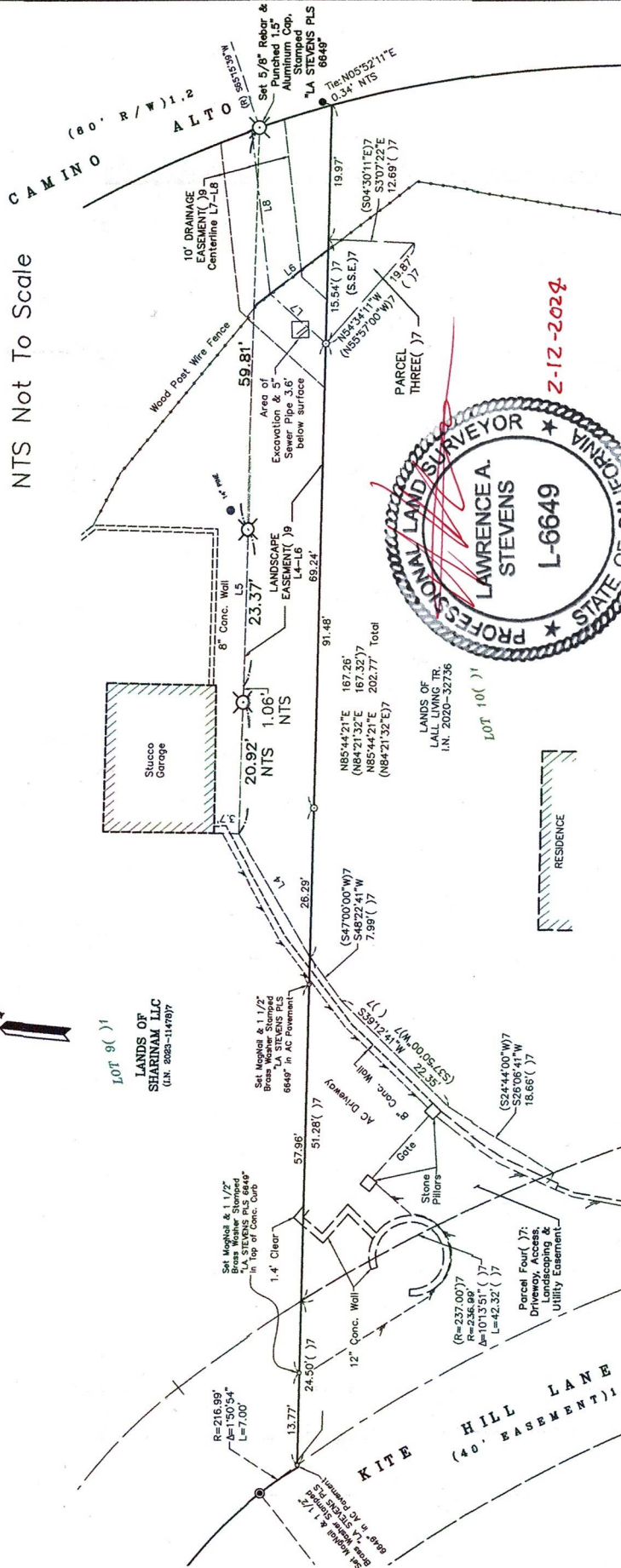
All distances shown in ( ) are record dimensions as stated in said reference document.

NOTE: For Additional info in this area, see 2023 RS 150, M.C.R.



Set 5/8" Rebar & Punched 2.5" Aluminum Cap, Stamped "LA STEVENS PLS 6649" on 101-19-2024

NTS Not To Scale



SOUTHERLY BOUNDARY DETAIL

Curve #	Radius	Delta	Length	Curve #	Radius	Delta	Length	Curve #	Radius	Delta	Length
C1	100.11'	144°156'	25.66'	C9	149.99'	93°121'	24.93'	C17	21.00'	66°04'05"	24.22'
C2	100.11'	144°136'	25.67'	C10	149.99'	93°119'	24.93'	C18	80.00'	33°50'46"	47.26'
C3	169.99'	124°48'49"	38.02'	C11	149.99'	19°04'13"	49.92'	C19	236.99'	5°25'24"	22.43'
C4	169.99'	124°48'51"	38.02'	C12	149.99'	93°102'	24.91'				
C5	169.99'	124°48'46"	38.01'	C13	149.99'	93°131'	24.94'				
C6	169.99'	124°48'36"	38.01'	C14	119.99'	12°29'47"	26.17'				
C7	149.99'	93°130'	24.94'	C15	119.99'	25°00'45"	52.38'				
C8	149.99'	93°204'	24.96'	C16	119.99'	12°29'28"	26.16'				

SOUTHERLY BOUNDARY DETAIL

Easement Line #	Direction	Length	Direction	Length
L4	N64°07'49"E	21.43'	(N62°45'00"E	21.43')9
L5	N86°01'49"E	78.65'	(N84°39'00"E	78.66')9
L6	S42°56'11"E	13.87'	(S44°19'00"E	13.88')1
L7	N36°09'59"E	11.17'	(N34°46'10"E	11.17')9
L8	N77°57'49"E	24.48'	(N76°35'00"E	24.47')9

Line #	Direction	Length	Direction	Length
L1	S10°59'25"E	13.03'	(S12°24'24"E	13.00')1
L2	N79°00'24"E	20.85'	(N77°35'36"E	20.85')1
L3	S10°59'36"E	32.33'	(S12°24'24"E	32.30')1



CORNER RECORD

FORMER RECORD OF SURVEY  
LANDS OF SHARINAM LLC  
(AS DESCRIBED IN L.N. 2023-0011478, AND BEING LOT 9, 20 RM 8B)  
CITY OF MILL VALLEY  
COUNTY OF MARIN  
STATE OF CALIFORNIA  
JANUARY 2024

L.A. Stevens & Associates, Inc.  
Professional Land Surveyors • (415) 382-7713  
7 Commercial Blvd, Suite 1 • Novato, California 94940