

# CORNER RECORD

Agency Index CR22-108

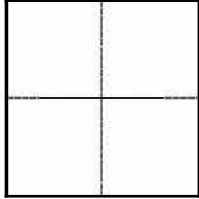
Document Number 033-250-05

City of MILL VALLEY County of MARIN, California

Brief Legal Description LOT 5 AS SHOWN ON THE MAP OF BLITHEDALE HIGHLANDS RECORDED IN BOOK 20 OF MAPS AT PAGE 88, MARIN COUNTY RECORDS

### CORNER TYPE

### COORDINATES (Optional)



- Government Corner
- Meander
- Rancho
- Control
- Property
- Other

Date of Survey 01-07-2022

N. \_\_\_\_\_ E. \_\_\_\_\_

Elevation \_\_\_\_\_

Units  Metric  U.S. Survey Foot

Horizontal Datum \_\_\_\_\_

Zone \_\_\_\_\_ Epoch Date \_\_\_\_\_

Vertical Datum \_\_\_\_\_

Complies with Public Resources Code §§8801-8819

Complies with Public Resources Code §§8890-8902

PLS Act Ref.:  8765(d)  8771  8773  Other:

Corner/Monument:  Left as found  Established  Rebuilt  Pre-Construction

Found and tagged  Reestablished  Referenced  Post-Construction

Narrative of corner identified and monument as found, set, reset, replaced, or removed:

See sheet #2 for description(s):

**FOUND 2" BRASS DISK MONUMENTS WITH PUNCH, STAMPED RCE 12510, SET IN CONCRETE IN MONUMENT WELLS ON KITE HILL LANE AS SHOWN ON THE MAP OF BLITHEDALE HIGHLANDS RECORDED IN BOOK 20 OF MAPS AT PAGE 88, MARIN COUNTY RECORDS. SET A 1/2" IRON PIPE, TAGGED LS 8155 AT THE NORTHWESTERLY CORNER OF LOT 5. SET A 1/2" IRON PIPE, TAGGED LS 8155 ON THE NORTHERLY LINE OF LOT 5, 30.00 FEET FROM THE NORTHEASTERLY CORNER OF SAID LOT. SEE SHEET 2 FOR DETAILS.**

### SURVEYOR'S STATEMENT

This Corner Record was prepared by me or under my direction in conformance with

the Professional Land Surveyors' Act on 10/21/2022

Signed *Steven J. Klein* P.L.S. or R.C.E. No. P.L.S. 8155



### COUNTY SURVEYOR'S STATEMENT

This Corner Record was received October 21, 2022

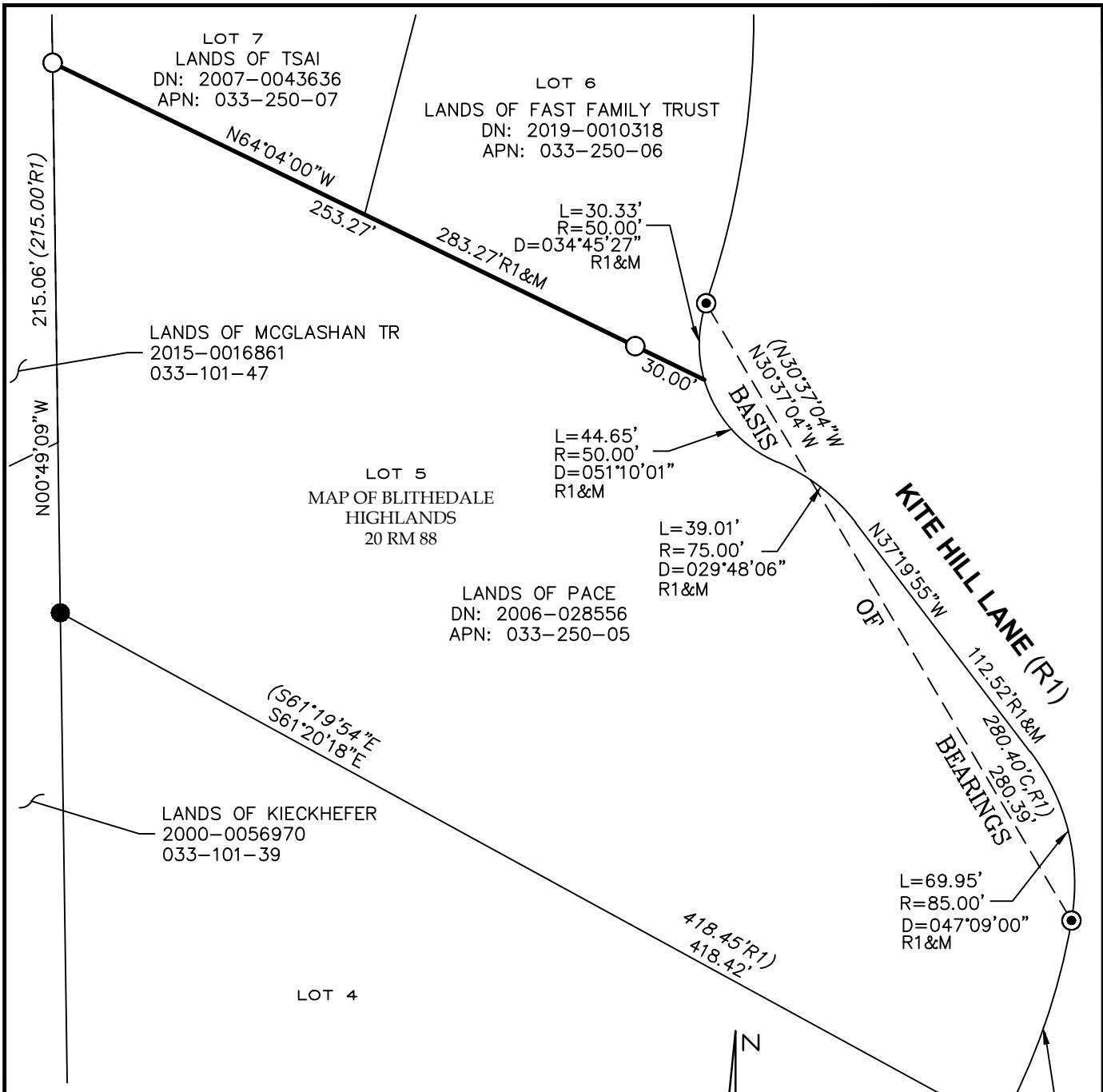
and examined and filed October 24, 2022

Signed *T.W. Park* P.L.S. 8176






Title County Surveyor

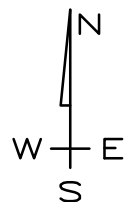
County Surveyor's Comment



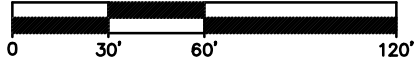


**LEGEND**

-  BOUNDARY LINE
-  ADJOINING BOUNDARY LINE
-  SET 1/2" IRON PIPE, TAGGED PLS 8155
-  FOUND 2" BRASS DISK WITH PUNCH, STAMPED RCE 12510 IN CONCRETE IN MONUMENT WELL PER R1
-  FOUND 3/4" IRON PIPE TAGGED LS 5296 PER CORNER RECORD DN: 33-250-04
- DN DOCUMENT NUMBER
- R1 MAP OF BLITHEDALE HIGHLANDS 20 MAPS 88
- R1&M RECORD AND MEASURED DATA ARE IDENTICAL



SCALE: 1" = 60'



**MUNSELLE CIVIL ENGINEERING**  
 CIVIL ENGINEERING ♦ LAND PLANNING  
 513 CENTER STREET  
 HEALDSBURG, CA 95448  
 (707) 395-0968