

CORNER RECORD

Marin City
County of Marin, California

Document Number APN 033-250-01

Brief Legal Description: Lot 1, "Map of Blithedale Highlands, Lands of Capital Homes-Kite Hill, L.P., Mill Valley, Marin County, California," filed for record in Volume 20 Maps Page 88, Marin County Records

CORNER TYPE

Government Corner
Meander
Rancho
Date of Survey: Nov. 2013

Control
Property
Other

COORDINATES

(Optional)

N. _____
E. _____
Zone _____ Datum _____
Elev. _____

Corner --Left as found Found and tagged Established Reestablished Rebuilt

Identification and type of corner found: Evidence used to identify or procedure used to establish or reestablish the corner.

This survey is based upon found monuments shown on that certain Map entitled "Map of Blithedale Highlands, Lands of Capital Homes-Kite Hill, L.P., Mill Valley, Marin County, California," filed for record in Volume 20 Maps Page 88, Marin County Records

A Description of the physical condition of the monument as found and as set or reset.

See Sheet two.

SURVEYOR'S STATEMENT

This Corner Record was prepared by me or under my direction in conformance with the Professional Land Surveyor's Act on Feb. 20, 2014

Signed *Amida A. Carullo* P.L.S. 7053

COUNTY SURVEYOR'S STATEMENT

This Corner Record was received APR. 21, 2014 and examined and filed MAY 2, 2014.

Signed *Richard B. ...* Title DEPUTY

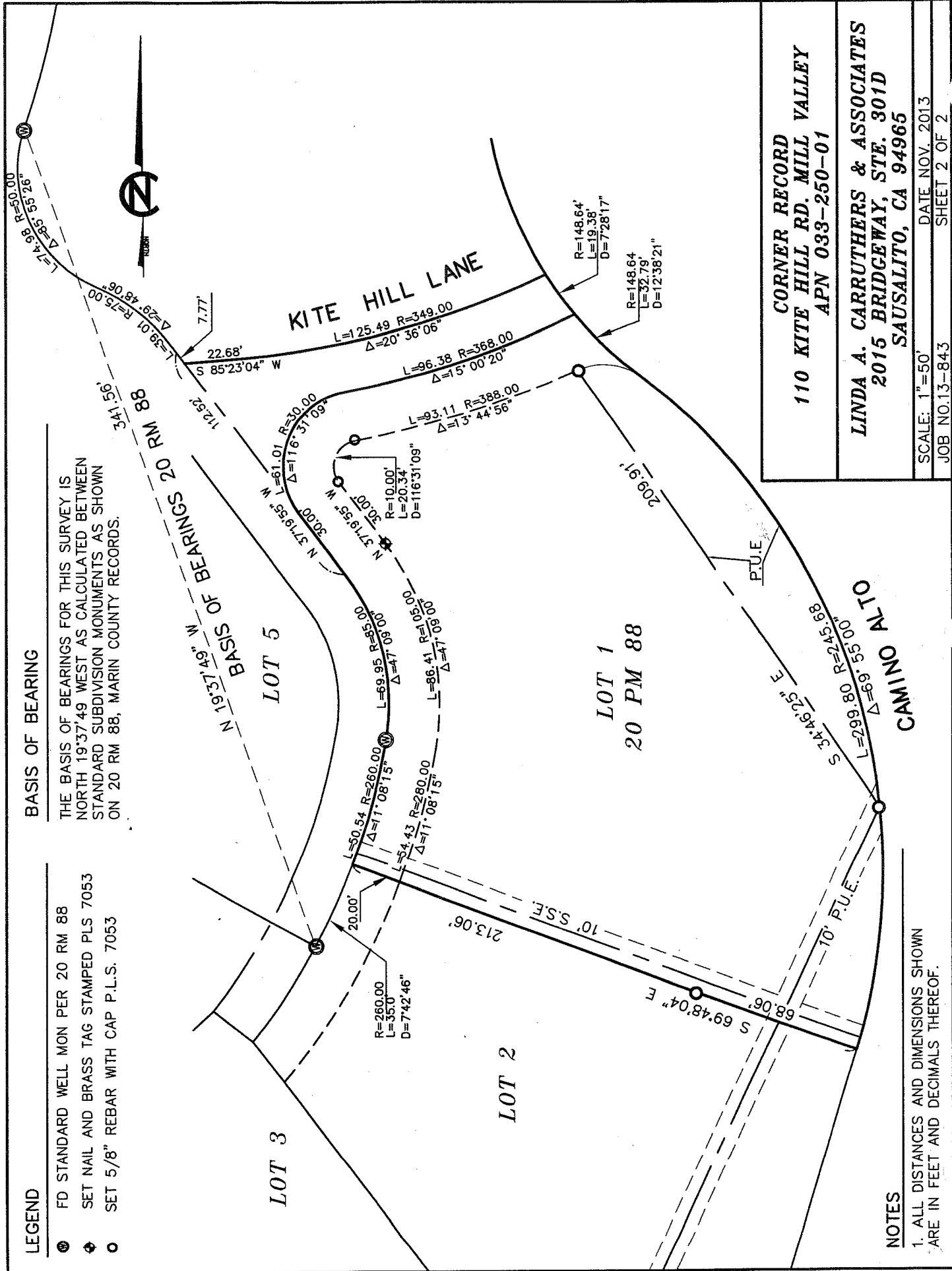
County Surveyor's Comments _____

LEGEND

- ⊙ FD STANDARD WELL MON PER 20 RM 88
- ⊕ SET NAIL AND BRASS TAG STAMPED PLS 7053
- SET 5/8" REBAR WITH CAP P.L.S. 7053

BASIS OF BEARING

THE BASIS OF BEARINGS FOR THIS SURVEY IS NORTH 19°37'49" WEST AS CALCULATED BETWEEN STANDARD SUBDIVISION MONUMENTS AS SHOWN ON 20 RM 88, MARIN COUNTY RECORDS.



<p>CORNER RECORD 110 KITE HILL RD. MILL VALLEY APN 033-250-01</p>	
<p>LINDA A. CARRUTHERS & ASSOCIATES 2015 BRIDGEWAY, STE. 301D SAUSALITO, CA 94965</p>	
SCALE: 1"=50'	DATE: NOV. 2013
JOB NO.13-843	SHEET 2 OF 2

NOTES

1. ALL DISTANCES AND DIMENSIONS SHOWN ARE IN FEET AND DECIMALS THEREOF.