

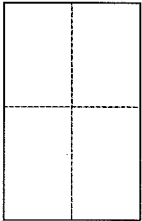
**CORNER RECORD**

Document Number 033-230-06

City of Mill Valley

County of Marin, California

Brief Legal Description Lot 6, Map of Greenfield Court, as shown on Recorded Map, in Book 19 of Maps, at Page 15.



**CORNER TYPE**

Government Corner  Control   
Meaneder  Property   
Rancho  Other   
Date of Survey 09/16/2014

**COORDINATES (Optional)**

N. \_\_\_\_\_  
E. \_\_\_\_\_  
Zone \_\_\_\_\_ NAD27  NAD83   
NAD83 Epoch \_\_\_\_\_  
Elev. \_\_\_\_\_  
Vert. Datum: NGVD29  NAVD88   
Meas. Units: Metric  Imperial

**Corner -** Left as found  Found and tagged  Established  Reestablished  Rebuilt

Identification and type of corner found: Evidence used to identify or procedure used to establish or reestablish the corner:  
Nail/Tag LS4788 per Corner Record #33-230-06 MCR, and 30D nail per Record Map in Book 19 of Maps, at page 15, were found in record position and used to set monuments at the angle points along the most southerly line of said Lot 6.

A description of the physical condition of the monument as found and as set or reset: \_\_\_\_\_  
Set (2) 1/2" Iron Pipes Tagged LS7237 as shown on exhibit drawing (opposite page).

**SURVEYOR'S STATEMENT**

This Corner Record was prepared by me or under my direction in conformance with the Land Surveyor's Act on SEPT. 23, 2014  
Signed Michael E. Ford P.L.S. or R.C.E. No. 7237



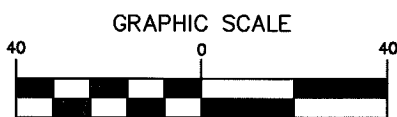
**COUNTY SURVEYOR'S STATEMENT**

This Corner Record was received 9/30/2014  
and examined and filed OCTOBER 31, 2014  
Signed Richard G. Simonitch P.L.S. or R.C.E. No. 7821  
Title DEPUTY



**County Surveyor's Comment**

\_\_\_\_\_  
\_\_\_\_\_  
\_\_\_\_\_



( IN FEET )  
1 inch = 40 ft.

MAP OF  
GREENFIELD  
COURT  
19 MAPS 15

LOT 6

LOT 5

R=15.00'  
D=57°17'45"  
L=15.00'

342.40'  
500°32'40"W  
5.00'

N87°43'44"E 116.90'

LOT 7

LOT 1

BASIS OF BEARING  
N 53°13'09" E

PARCEL "A"

LOMITA DRIVE  
(60' R/W)

**LEGEND**

○ SET 1/2" IRON PIPE LS7237

⊙ FOUND NAIL AND TAG LS4788 PER  
CORNER RECORD NO. 33-230-06, M.C.R.

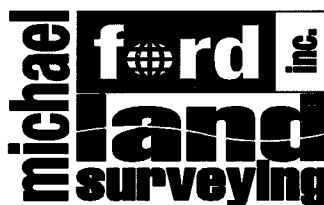
⊙ FOUND 30D NAIL, NEAR CL OF LOMITA DRIVE,  
PER 19 MAPS 15, M.C.R.

**BASIS OF BEARINGS**

N 53°13'09" E BETWEEN FOUND NAIL AND TAG  
AND A 30D NAIL IN LOMITA DRIVE.

**NOTE:**

ALL COURSES SHOWN HEREON ARE RECORD AND  
MEASURED PER 19 MAPS 15, M.C.R.



2300 bethards drive, suite J

santa rosa, california 95405

p 707.542.8513 - f 707.542.1825

www.michaelfordinc.com