

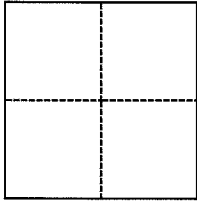
# CORNER RECORD

Agency Index DPW # 18-022  
Document Number APN #033-210-06 & 07

City of Mill Valley County of Marin, California  
Brief Legal Description Lot 31 & 32, Scott Valley Meadows, Volume 18 Of Maps, Pg 71, M.C.R.

### CORNER TYPE

### COORDINATES (Optional)



- Government Corner
- Meander
- Rancho
- Control
- Property
- Other

Date of Survey DEC 23, 2017

N. \_\_\_\_\_ E. \_\_\_\_\_  
 Elevation \_\_\_\_\_  
 Units  Metric  U.S. Survey Foot  
 Horizontal Datum \_\_\_\_\_  
 Zone \_\_\_\_\_ Epoch Date \_\_\_\_\_  
 Vertical Datum \_\_\_\_\_  
 Complies with Public Resources Code §§8801-8819  
 Complies with Public Resources Code §§8890-8902

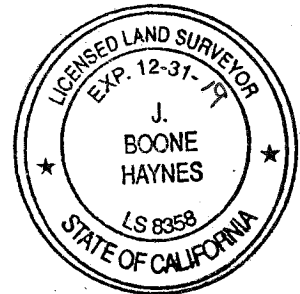
- PLS Act Ref.:  8765(d)  8771  8773  Other:
- Corner/Monument:  Left as found  Established  Rebuilt  Pre-Construction  
 Found and tagged  Reestablished  Referenced  Post-Construction

Narrative of corner identified and monument as found, set, reset, replaced, or removed:  
 See sheet #2 for description(s):

Found 3/4" Iron Pipes Tagged LS 3971 At Rear Property Corners And Street Well Monuments Per Volume 18 Of Maps, Page 71. Set Nail And Tag LS 8358 In Top Of Curb At Property Line Prod. As Shown On Sheet 2.

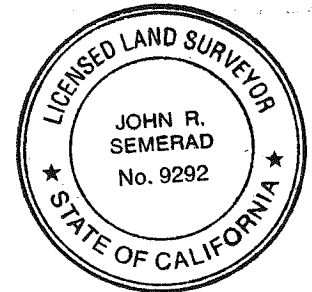
### SURVEYOR'S STATEMENT

This Corner Record was prepared by me or under my direction in conformance with  
 the Professional Land Surveyors' Act on December 28, 2017  
 Signed [Signature] P.L.S. or R.C.E. No. PLS 8358

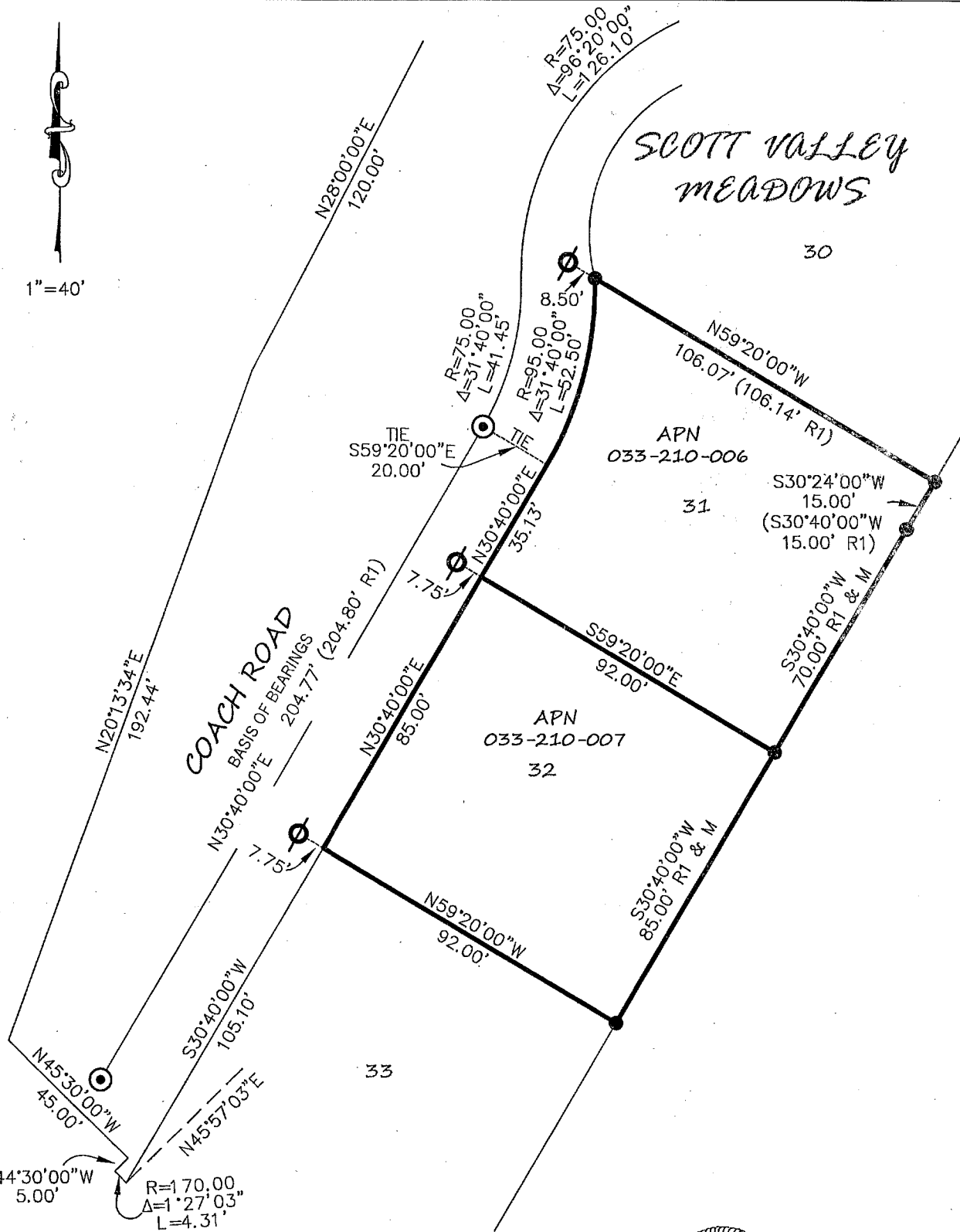
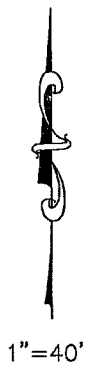


### COUNTY SURVEYOR'S STATEMENT

This Corner Record was received APRIL 11, 2018  
 and examined and filed MAY 11, 2018  
 Signed [Signature] P.L.S. or R.C.E. No. 9292  
 Title DEPUTY C.S.



County Surveyor's Comment



**LEGEND:**

- FOUND 3/4" IRON PIPE LS 3971
- ⊗ SET NAIL & TAG L.S. 8358
- ⊙ FOUND STANDARD CITY WELL MONUMENT
- R1 RECORD MAP 018-017 MCR
- M MEASURED



HERITAGELANDSURVEYS.COM

(707) 583-4066

# CORNER RECORD

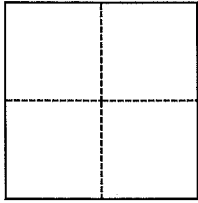
Agency Index \_\_\_\_\_

Document Number APN #033-210-06 107

City of Mill Valley County of Marin, California

Brief Legal Description Lot 31 & 32, Scott Valley Meadows, Volume 18 Of Maps, Pg 71, M.C.R.

### CORNER TYPE



- Government Corner
- Meander
- Rancho
- Control
- Property
- Other

Date of Survey DEC 23, 2017

### COORDINATES (Optional)

N. \_\_\_\_\_ E. \_\_\_\_\_

Elevation \_\_\_\_\_

Units  Metric  U.S. Survey Foot

Horizontal Datum \_\_\_\_\_

Zone \_\_\_\_\_ Epoch Date \_\_\_\_\_

Vertical Datum \_\_\_\_\_

Complies with Public Resources Code §§8801-8819

Complies with Public Resources Code §§8890-8902

PLS Act Ref.:  8765(d)  8771  8773  Other:

Corner/Monument:  Left as found  Established  Rebuilt  Pre-Construction

Found and tagged  Reestablished  Referenced  Post-Construction

Narrative of corner identified and monument as found, set, reset, replaced, or removed:

See sheet #2 for description(s):

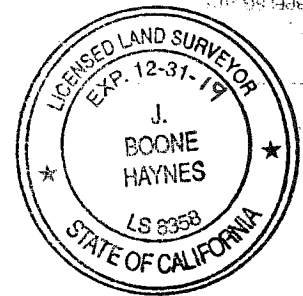
Found 3/4" Iron Pipes Tagged LS 3971 At Rear Property Corners And Street Well Monuments Per Volume 18 Of Maps, Page 71. Set Nail And Tag LS 8358 In Top Of Curb At Property Line Prod. As Shown On Sheet 2.

### SURVEYOR'S STATEMENT

This Corner Record was prepared by me or under my direction in conformance with

the Professional Land Surveyors' Act on December 28, 2017

Signed [Signature] P.L.S. or R.C.E. No. PLS 8358



### COUNTY SURVEYOR'S STATEMENT

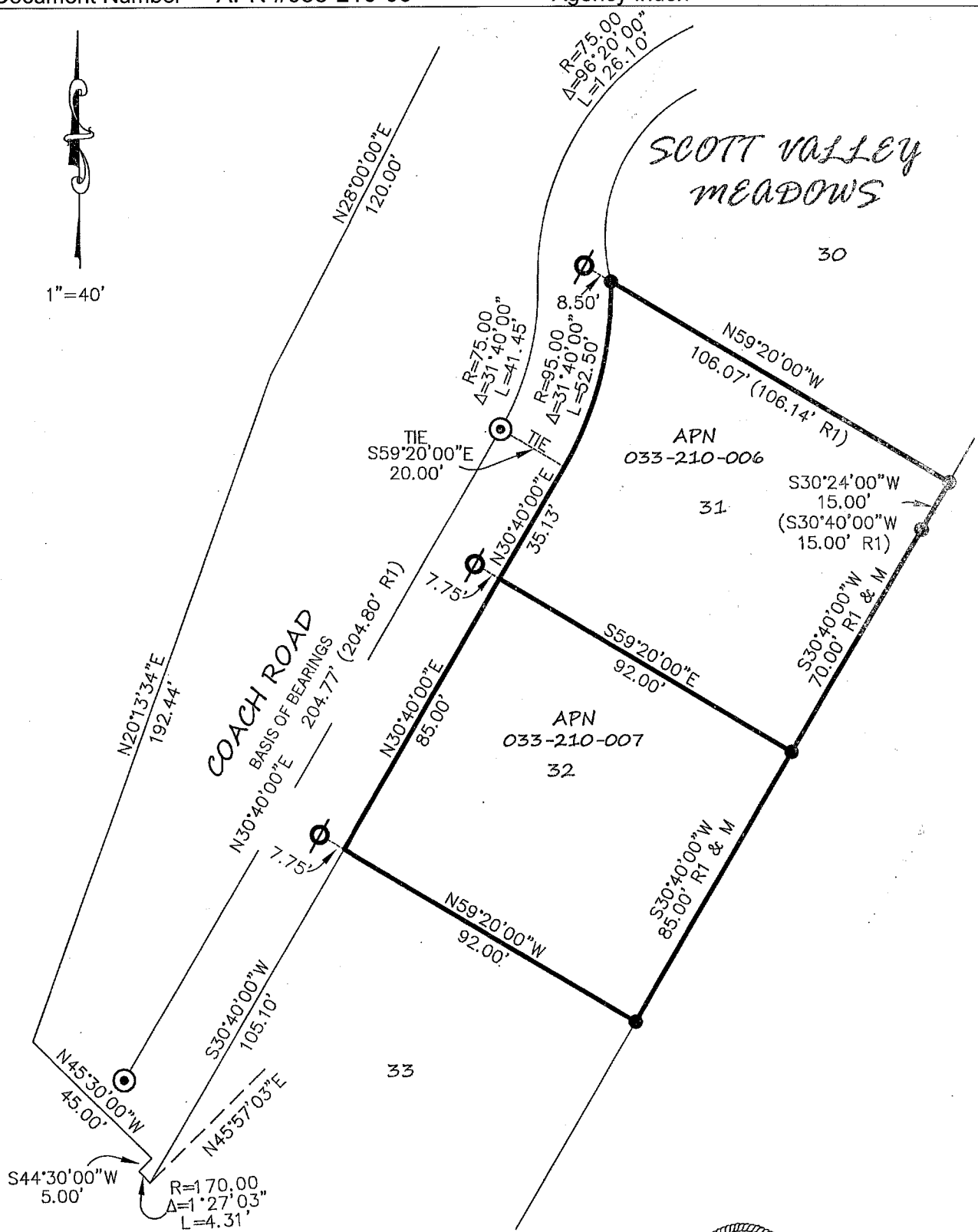
This Corner Record was received \_\_\_\_\_

and examined and filed \_\_\_\_\_

Signed \_\_\_\_\_ P.L.S. or R.C.E. No. \_\_\_\_\_

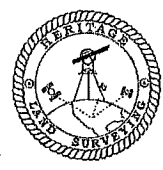
Title \_\_\_\_\_

County Surveyor's Comment



**LEGEND:**

- FOUND 3/4" IRON PIPE LS 3971
- ⊙ SET NAIL & TAG L.S. 8358
- ⊙ FOUND STANDARD CITY WELL MONUMENT
- R1 RECORD MAP 018-017 MCR
- M MEASURED



HERITAGELANDSURVEYS.COM

(707) 583-4066