

CORNER RECORD

Agency Index

21-083

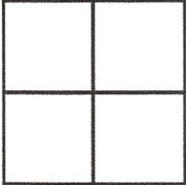
Document Number

033-210-02

City of MILL VALLEY

County of MARIN, California

Brief Legal Description Lot 29, 18 RM 71



CORNER TYPE

Government Corner Control
Meander Property
Rancho Other

Date of Survey 4/27/21 - 5/4/21

COORDINATES (Optional)

N. _____ E. _____

Elevation _____

Units Metric U.S. Survey Foot

Horizontal Datum _____

Zone _____ Epoch Date _____

Vertical Datum _____

Complies with Public Resources Code §§8801-8819

Complies with Public Resources Code §§8890-8902

PLS Act Ref: 8765(d) 8771 8773 Other:

Corner/Monument: Left as found Established Rebuilt Pre-Construction

Found and tagged Reestablished Referenced Post-Construction

Narrative of corner identified and monument as found, set, reset, replaced, or removed:

See sheet #2 for description (s):

SURVEYOR'S STATEMENT

This Corner Record was prepared by me or under my direction in conformance with the Professional Land Surveyors' Act on May 17, 2021

Signed [Signature] P.L.S. or R.C.E. No. 6649



COUNTY SURVEYOR'S STATEMENT

This Corner Record was received 05/19/2021

and examined and filed 07/14/2021

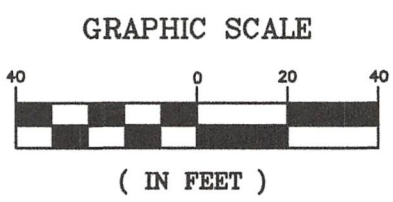
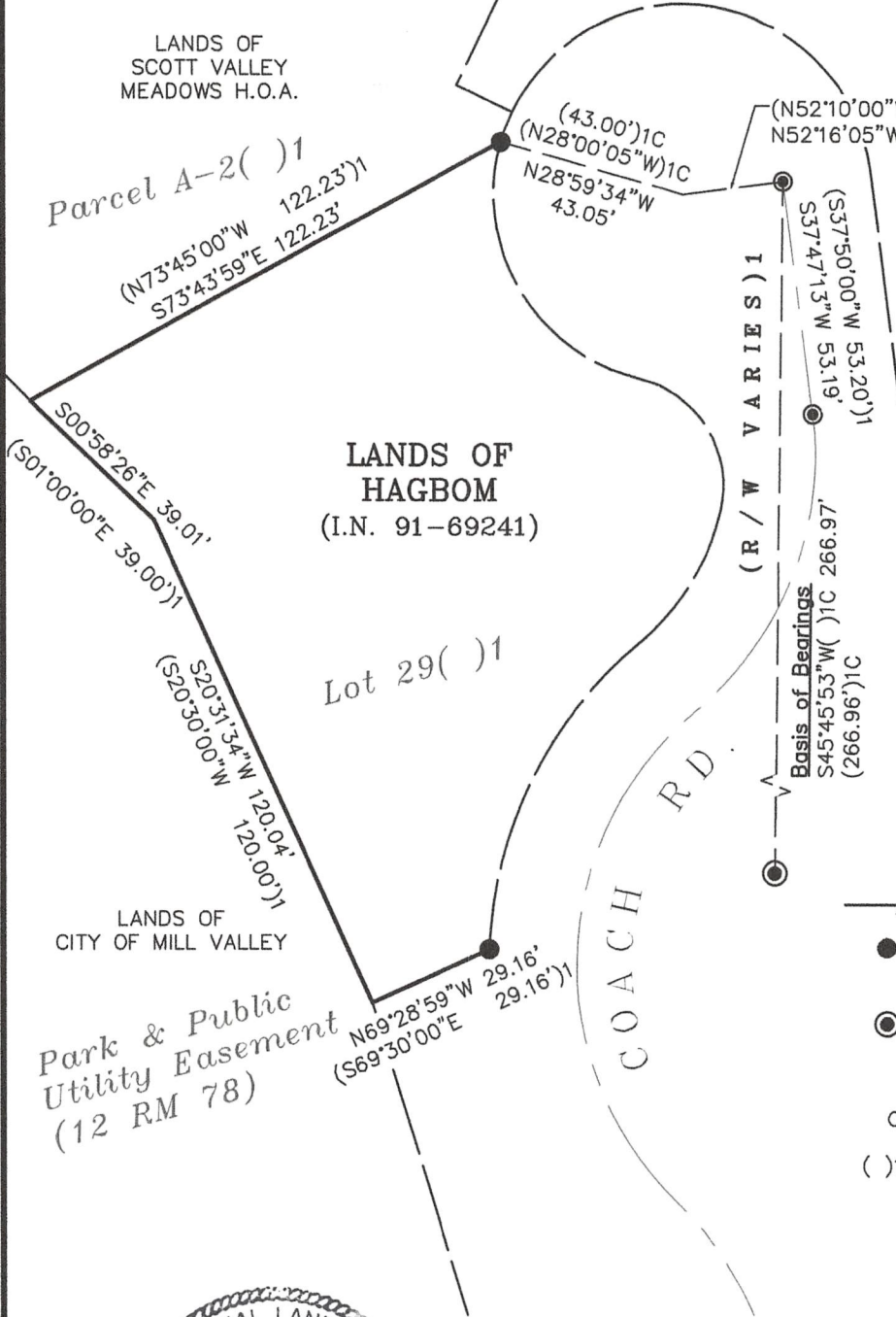
Signed [Signature] P.L.S. or R.C.E. No. 9292

Title DEPUTY



County Surveyor's Comment _____

All distances shown are in feet and decimals thereof



LEGEND

- Found 3/4" Iron Pipe with Nail & Tag "LS 3971"
- ⊙ Found Standard Well Casing with 2" Brass Disc "RCE 12510" and Dimple in Concrete
- C Calculated Per Record Map
- () 18 RM 71



5-17-2021

[Handwritten Signature]
Lawrence A. Stevens, PLS 6649

**CORNER RECORD
LANDS OF HAGBOM**

(Lot 29, 18 RM 71)

MILL VALLEY MARIN COUNTY CALIFORNIA
SCALE: 1" = 40' MAY, 2021

L.A. Stevens & Associates, Inc.

Professional Land Surveyors * (415) 382-7713
7 Commercial Blvd., Suite 1 * Novato, CA 94949

Job # 212115