

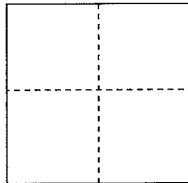
CORNER RECORD

Documented Number 033-192-06

City of Mill Valley

County of Marin, California

Brief Legal Description Lot 65, Map of Scott Highlands, Unit Two, 12 Maps 100



CORNER TYPE

Government Corner Control
Meander Property
Rancho Other

COORDINATES(Optional)

N. _____
E. _____
Zone _____ NAD27 NAD83
NAD83 Epoch _____
Elevation _____
Vert. Datum: NGVD 29 NADV88
Meas. Units: Metric Imperial

Date of Survey 4/14 & 4/28/2014

Corner- Left as found Found and tagged Established Reestablished Rebuilt

Identification and type of corner found: Evidence used to identify or procedure used to establish or reestablish the corner:
Reestablish the exterior boundary for Lot 65, Map of Scott Highlands, Unit Two, 12 Maps 100, from existing standard street monuments on both Overhill Road and on Escalon Drive. This survey held the position of the monument on Overhill Road opposite Lots 61 & 75 of said map and also used for a Basis of Bearings the two standard street monuments on Escalon Drive opposite Lots 65 & 66 per the same referred map. Refer to details on reverse side for points set and details.

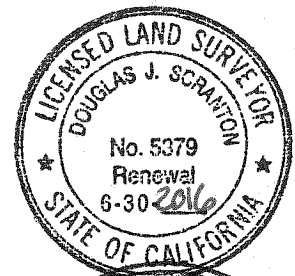
A description of the physical condition of the monument as found and as set or reset:
Set either a one half inch rebar with yellow plastic cap attached to the top of the rebar and driven flush to surrounding grade (note: the cap is stamped "Scranton, PLS 5379") or set a brass tag stamped PLS 5379 with a brass pin. See sketch on reverse side for specific location of points set per this survey.

SURVEYOR'S STATEMENT

This Corner Record was prepared by me or under my direction in conformance with

the Land Surveyor's Act on May 12, 2014

Signed Douglas J. Scranton P.L.S. or R.C.E. No.: PLS 5379



COUNTY SURVEYOR'S STATEMENT

This Corner Record was received JUNE 30, 2014 and examined

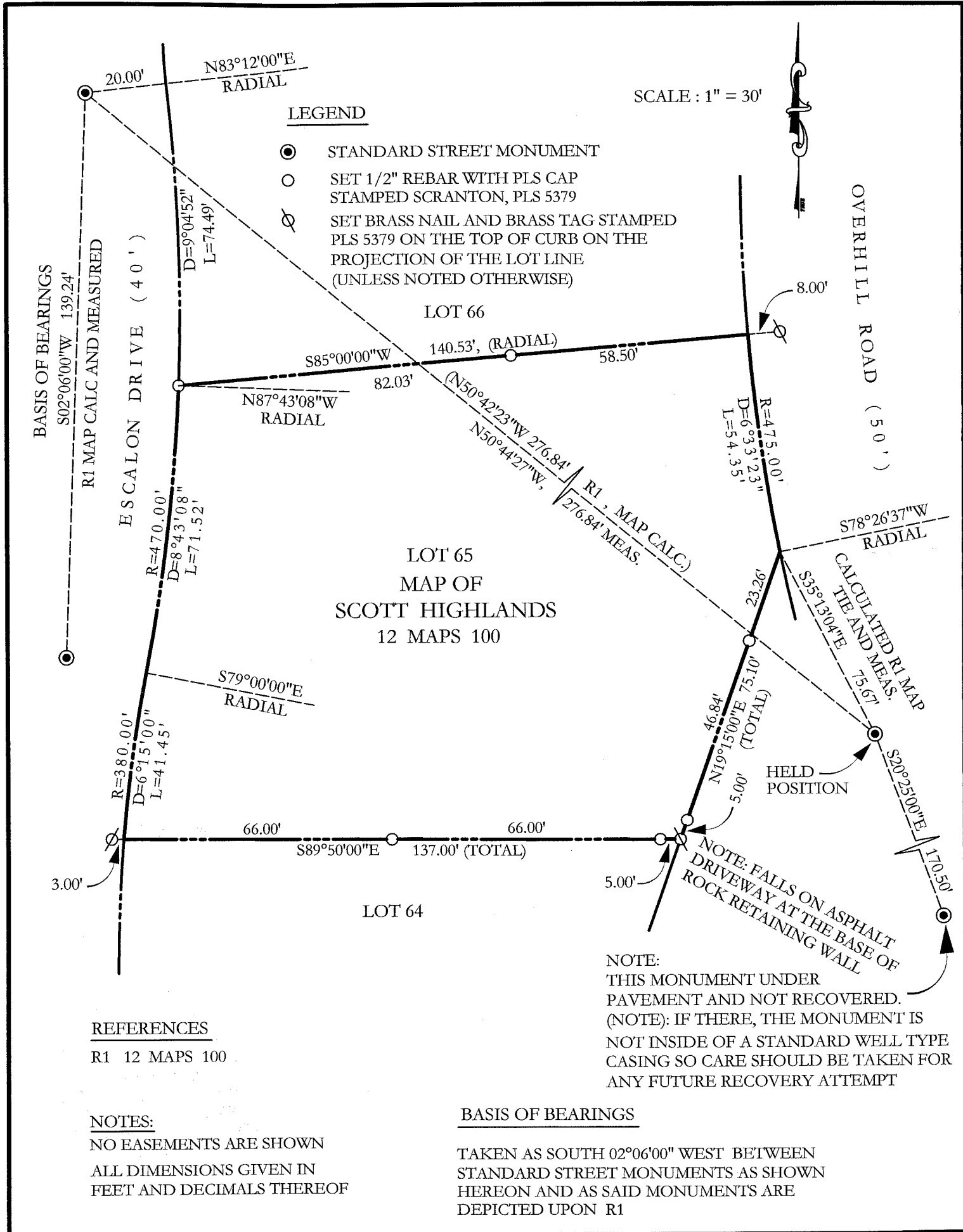
and filed July 3, 2014

Signed Richard G. Simonitch P.L.S. or R.C.E. No.: 7821



Title DEPUTY

County Surveyor's Comment _____



LEGEND

- STANDARD STREET MONUMENT
- SET 1/2" REBAR WITH PLS CAP STAMPED SCRANTON, PLS 5379
- ⊗ SET BRASS NAIL AND BRASS TAG STAMPED PLS 5379 ON THE TOP OF CURB ON THE PROJECTION OF THE LOT LINE (UNLESS NOTED OTHERWISE)

SCALE : 1" = 30'



**MAP OF SCOTT HIGHLANDS
12 MAPS 100**

REFERENCES

R1 12 MAPS 100

NOTES:

NO EASEMENTS ARE SHOWN
ALL DIMENSIONS GIVEN IN FEET AND DECIMALS THEREOF

BASIS OF BEARINGS

TAKEN AS SOUTH 02°06'00" WEST BETWEEN STANDARD STREET MONUMENTS AS SHOWN HEREON AND AS SAID MONUMENTS ARE DEPICTED UPON R1

NOTE:
THIS MONUMENT UNDER PAVEMENT AND NOT RECOVERED.
(NOTE): IF THERE, THE MONUMENT IS NOT INSIDE OF A STANDARD WELL TYPE CASING SO CARE SHOULD BE TAKEN FOR ANY FUTURE RECOVERY ATTEMPT

NOTE: FALLS ON ASPHALT DRIVEWAY AT THE BASE OF ROCK RETAINING WALL

CALCULATED R1 MAP TIE AND MEAS.

HELD POSITION

OVERHILL ROAD (50')

ESCALON DRIVE (40')

BASIS OF BEARINGS
S02°06'00"W 139.24'

R1 MAP CALC AND MEASURED

N83°12'00"E
RADIAL

D=9°04'52"
L=74.49'

N87°43'08"W
RADIAL

R=470.00'
D=8°43'08"
L=71.52'

S79°00'00"E
RADIAL

R=380.00'
D=6°15'00"
L=41.45'

S85°00'00"W
82.03'

LOT 66

140.53', (RADIAL)

58.50'

LOT 65

MAP OF SCOTT HIGHLANDS
12 MAPS 100

LOT 64

S89°50'00"E
66.00' 137.00' (TOTAL)

N50°42'23"W 276.84'

N50°44'27"W, 276.84' MEAS.

R1, MAP CALC.
R=475.00'
D=6°33'23"
L=54.35'

S78°26'37"W
RADIAL

R=475.00'
D=6°33'23"
L=54.35'

S35°13'04"E
75.67'

N19°15'00"E 75.10' (TOTAL)

NOTE: FALLS ON ASPHALT DRIVEWAY AT THE BASE OF ROCK RETAINING WALL

S20°25'00"E
170.50'

3.00'

5.00'

8.00'