

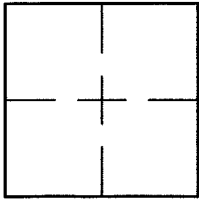
CORNER RECORD

Document Number A.P. 33-191-06

City of MILL VALLEY

County of MARIN, California

Brief Legal Description LOT 85 PER 12 R.M. 101



CORNER TYPE

COORDINATES (Optional)

Government Corner  Control

Meander  Property

Rancho  Other

Date of Survey 7/18/16

N. \_\_\_\_\_  
 E. \_\_\_\_\_  
 Zone \_\_\_\_\_ NAD27  NAD83   
 NAD83 Epoch \_\_\_\_\_  
 Elev. \_\_\_\_\_  
 Vert. Datum: NGVD29  NAVD88   
 Meas. Units: Metric  Imperial

Corner- Left as found  Found and tagged  Established  Reestablished  Rebuilt

Identification and type of corner found: Evidence used to identify or procedure used to establish or reestablish the corner:  
REESTABLISHED THE BOUNDARY LINES OF LOT 85 USING FOUND STREET MONUMENTS ON ESCALON DRIVE  
PER 12 R.M. 101 AND AS SHOWN ON SHEET 2.

A description of the physical condition of the monument as found and as set or reset: SEE SHEET 2.

SURVEYOR'S STATEMENT

This Corner Record was prepared by me or under my direction in conformance with

the Land Surveyor's Act on JULY 20, 2016

Signed Lawrence P Doyle P.L.S. or R.C.E. No. P.L.S. 4694



COUNTY SURVEYOR'S STATEMENT

This Corner Record was received July 25, 2016

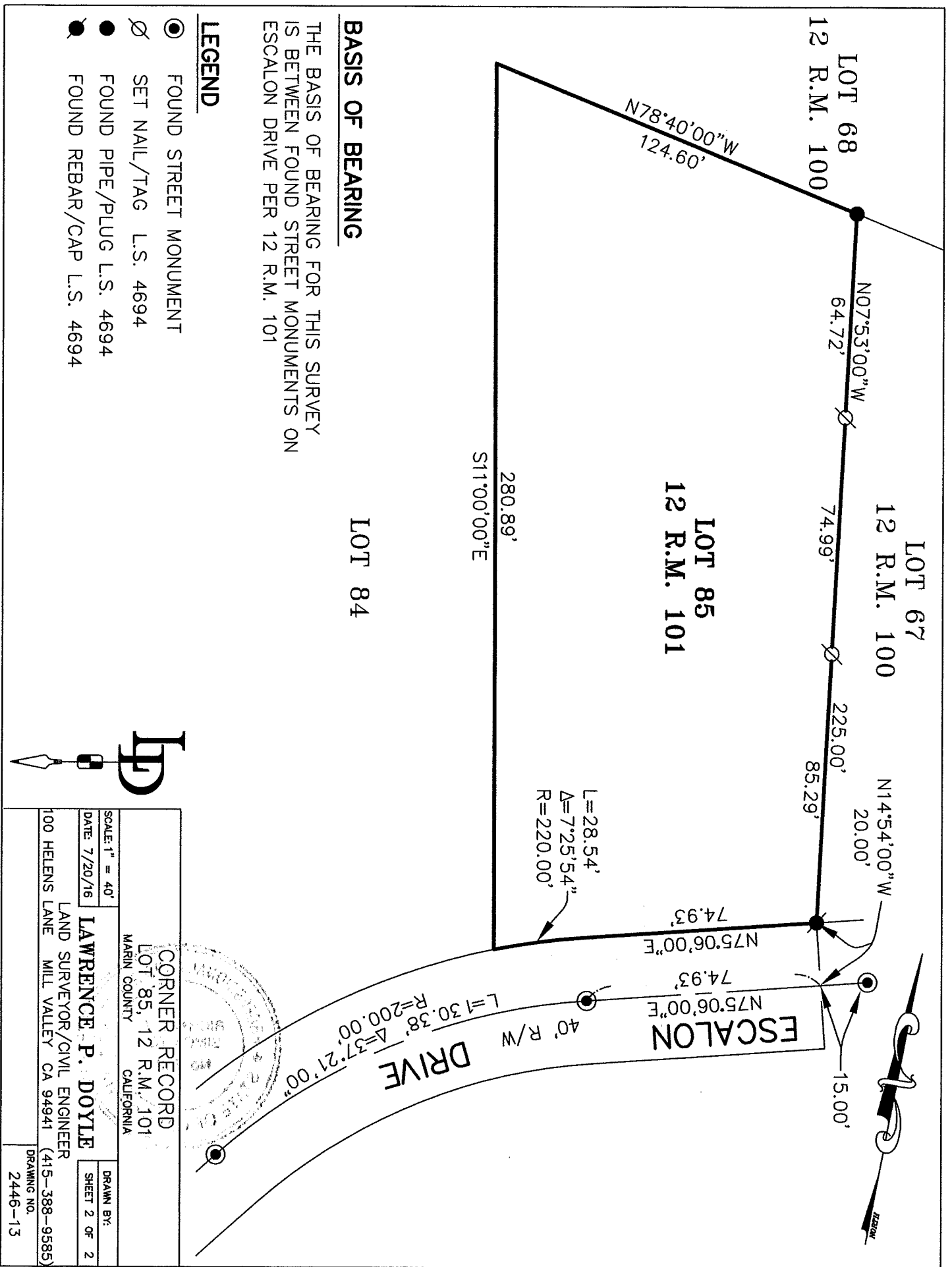
and examined and filed SEPTEMBER 27<sup>th</sup> 2016

Signed Paul Smith P.L.S. or R.C.E. No. 7821

Title County Surveyor



County Surveyor's Comment \_\_\_\_\_



**BASIS OF BEARING**

THE BASIS OF BEARING FOR THIS SURVEY IS BETWEEN FOUND STREET MONUMENTS ON ESCALON DRIVE PER 12 R.M. 101

**LEGEND**

- FOUND STREET MONUMENT
- ∅ SET NAIL/TAG L.S. 4694
- FOUND PIPE/PLUG L.S. 4694
- FOUND REBAR/CAP L.S. 4694

LOT 84

LOT 85  
12 R.M. 101

LOT 67  
12 R.M. 100

LOT 68  
12 R.M. 100

L=28.54'  
Δ=7°25'54"  
R=220.00'

ESCALON DRIVE

L=30.38'  
Δ=37.21°  
R=200.00'



CORNER RECORD LOT 85, 12 R.M. 101 MARIN COUNTY CALIFORNIA	
SCALE: 1" = 40'	DRAWN BY:
DATE: 7/20/16	SHEET 2 OF 2
LAWRENCE P. DOYLE LAND SURVEYOR/CIVIL ENGINEER 100 HELENS LANE MILL VALLEY CA 94941 (415-388-9585)	
DRAWING NO. 2446-13	