

CORNER RECORD

Agency Index DPW #18-031

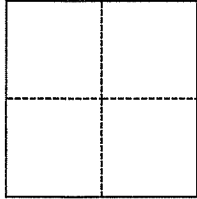
Document Number 033-181-07

City of Mill Valley County of Marin, California

Brief Legal Description Centerline of Lower Drive, shown on 12 RM 78, Marin County Records

CORNER TYPE

COORDINATES (Optional)



- Government Corner
- Meander
- Rancho
- Control
- Property
- Other

Date of Survey March 19, 2018

N. _____ E. _____

Elevation _____

Units Metric U.S. Survey Foot

Horizontal Datum _____

Zone _____ Epoch Date _____

Vertical Datum _____

Complies with Public Resources Code §§8801-8819

Complies with Public Resources Code §§8890-8902

PLS Act Ref.: 8765(d) 8771 8773 Other:

Corner/Monument: Left as found Established Rebuilt Pre-Construction

Found and tagged Reestablished Referenced Post-Construction

Narrative of corner identified and monument as found, set, reset, replaced, or removed:

See sheet #2 for description(s):

SURVEYOR'S STATEMENT

This Corner Record was prepared by me or under my direction in conformance with

the Professional Land Surveyors' Act on March 8, 2019

Signed [Signature] P.L.S. or R.C.E. No. 8806



COUNTY SURVEYOR'S STATEMENT

This Corner Record was received May 7, 2019

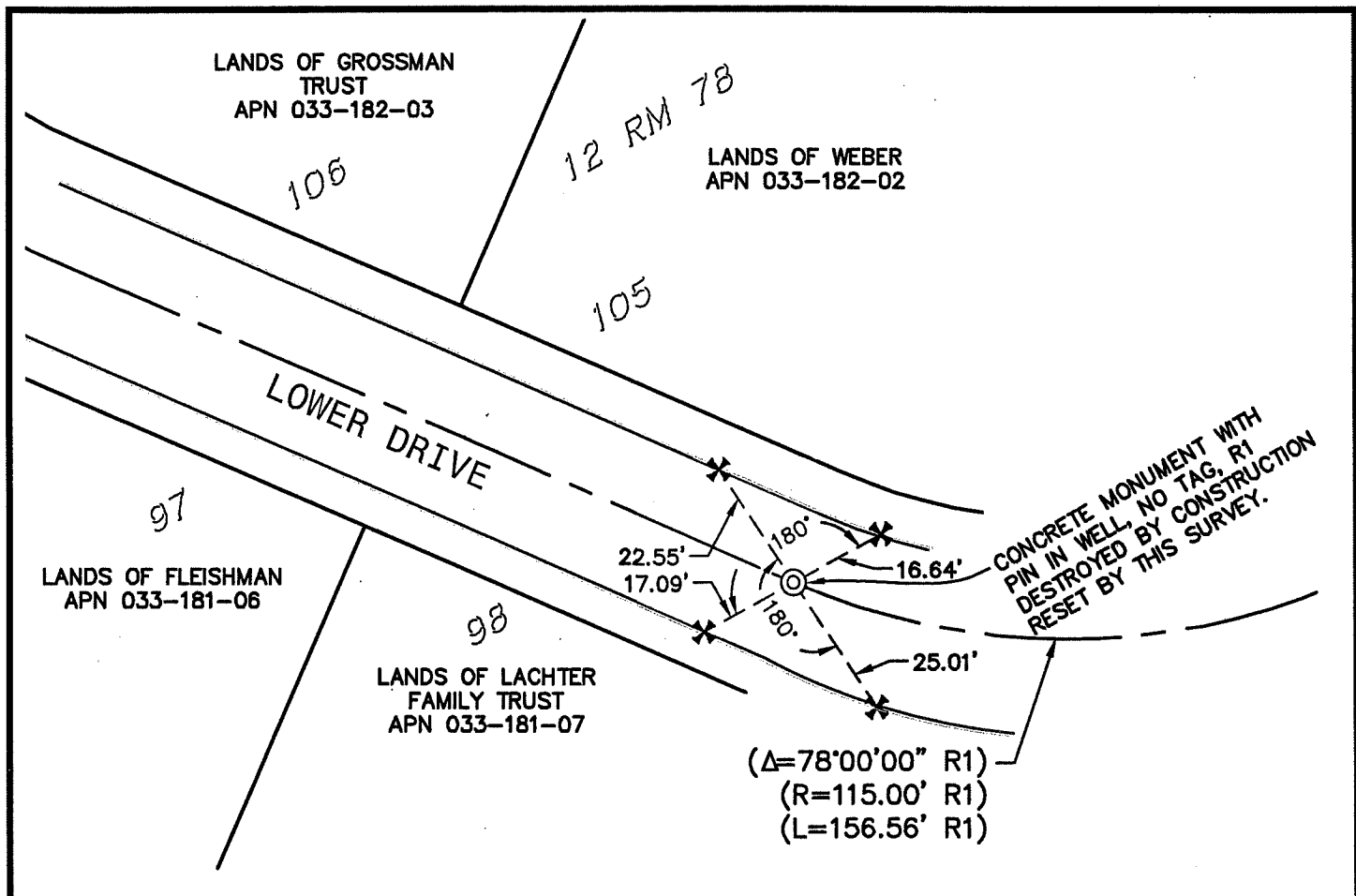
and examined and filed Apr. 15, 2019

Signed [Signature] P.L.S. or R.C.E. No. 9292

Title Deputy C.S.

County Surveyor's Comment



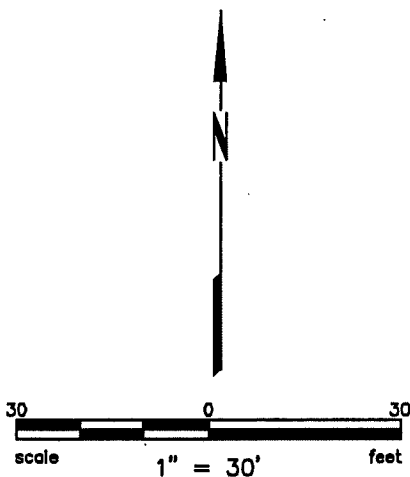


REFERENCES

R1 MAP OF SCOTTS VALLEY UNIT THREE; 12 RM 78

LEGEND

- ⊙ FOUND CONCRETE MONUMENT WITH PIN IN WELL
- ✕ SET SCRIBED 'X' ON TOP OF CURB (REFERENCE POINT PRIOR TO MONUMENT DISTURBANCE)
- ⊙ RESET BRASS DISC IN MONUMENT WELL, STAMPED "135 PLS 8806"



Plot Jan 21, 2019 at 11:52am

