

**CORNER RECORD**

Document Number

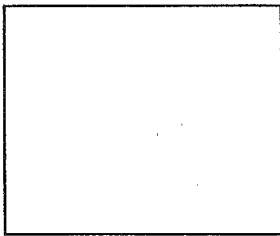
033-134-06

City of Mill Valley

County of Marin,

State of California

Brief Legal Description: Lot 79 as shown on that "Map Of Scott Valley Unit One", filed in Map Book 10, at Page 69, Marin County Records



Corner Type

Coordinates (optional)

Government Corner  Control  N.  
 Meander  Property  E.  
 Rancho  Other  Zone \_\_\_\_\_ Datum  
 Date of Survey May 20, 2014 Elev.

Corner - Left as found  Found and tagged  Established  Reestablished  Rebuilt

Identification and type of corner found; Evidence used to identify or procedure used to establish or re-establish the corner: Using Record information from that "Map Of Scott Valley Unit One", filed in Map Book 10, at Page 69, Marin County Records, recalculated the lot corners based upon record information and found centerline monumentation as shown on said map.

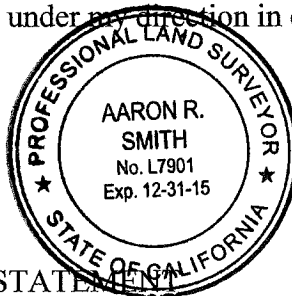
A description of the physical condition of the monument as found and as set or reset:

No monuments were found at lot corners. Set 3/4" iron pipes with cap "PLS 7901" at southerly lot corners and angles, and along east and west lines. On northerly line of lot (frontage with Vasco Drive) set reference monuments, 1/2" brass disk "PLS7901" in top of concrete curb on extension of side property lines.

**SURVEYOR'S STATEMENT**

This Corner Record was prepared by me or under my direction in conformance with the Land Surveyor's Act on July 30, 2014.

Signed: Aaron R. Smith  
Aaron R. Smith, PLS 7901,  
my license expires 12/31/15



**COUNTY SURVEYOR'S STATEMENT**

This Corner Record was received August 21, 2014 and examined and filed OCTOBER 15, 2014.

Signed Richard G. Simonitch County Surveyor, Marin County  
by Deputy: Craig Tackabery, PLS 7128  
my license expires 12/31/14



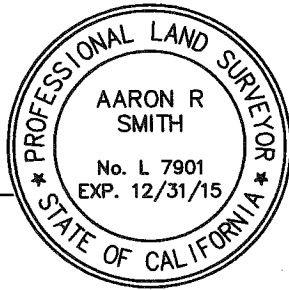
County Surveyor's Comment:

# Corner Record

Date: SEPT. 24, 2014

*Aaron R. Smith*

Aaron R. Smith, PLS 7901  
my license expires 12/31/15

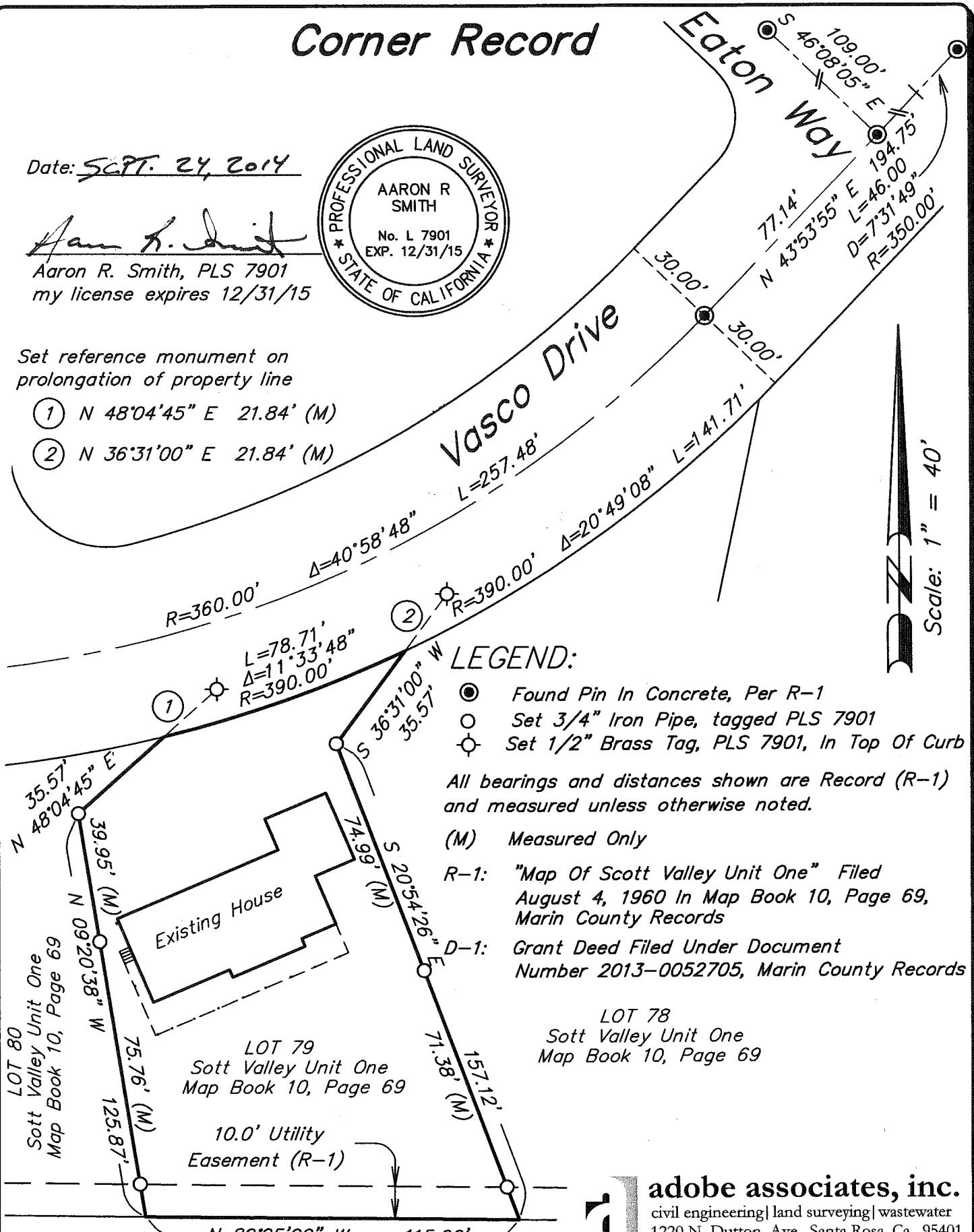


Set reference monument on  
prolongation of property line

- ① N 48°04'45" E 21.84' (M)
- ② N 36°31'00" E 21.84' (M)

Vasco Drive

Eaton Way



### LEGEND:

- Found Pin In Concrete, Per R-1
- Set 3/4" Iron Pipe, tagged PLS 7901
- ⊙ Set 1/2" Brass Tag, PLS 7901, In Top Of Curb

All bearings and distances shown are Record (R-1) and measured unless otherwise noted.

(M) Measured Only

R-1: "Map Of Scott Valley Unit One" Filed August 4, 1960 In Map Book 10, Page 69, Marin County Records

D-1: Grant Deed Filed Under Document Number 2013-0052705, Marin County Records

LOT 78  
Scott Valley Unit One  
Map Book 10, Page 69

LOT 79  
Scott Valley Unit One  
Map Book 10, Page 69

10.0' Utility  
Easement (R-1)

N 89°25'00" W 115.00'  
Garden Hill  
Map Book 10, Page 30

**adobe associates, inc.**  
civil engineering | land surveying | wastewater  
1220 N. Dutton, Ave., Santa Rosa, Ca. 95401  
P (707) 541-2300; F (707) 541-2301

File: T:\2013 PROJECTS\13200\dwg\Adobe-Survey\13200-CR-20140730.dwg Time: Sep 23, 2014 - 9:57am