

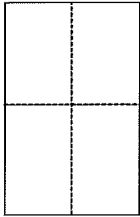
CORNER RECORD

Document Number 033-133-08

City of Mill Valley

County of Marin, California

Brief Legal Description Lot 72, as shown on Record Map entitled "Scott Valley, Unit One" 10 Maps 69, Marin County Records.



CORNER TYPE

Government Corner Control
Meaneder Property
Rancho Other
Date of Survey 11/24/2015

COORDINATES (Optional)

N. _____
E. _____
Zone _____ NAD27 NAD83
NAD83 Epoch _____
Elev. _____
Vert. Datum: NGVD29 NAVD88
Meas. Units: Metric Imperial

Corner - Left as found Found and tagged Established Reestablished Rebuilt

Identification and type of corner found: Evidence used to identify or procedure used to establish or reestablish the corner:

Found Street Well Monuments, being pin in concrete, along Azalea Drive, to be in record position and used to set property corners for Lot 72, per 10 Maps 69, M.C.R.

A description of the physical condition of the monument as found and as set or reset:

Set (2) Brass tags (LS7237), and (4) 1/2" iron pipes, tagged LS7237, as shown on attached exhibit.

SURVEYOR'S STATEMENT

This Corner Record was prepared by me or under my direction in conformance with the Land Surveyor's Act on Dec. 9th 2015

Signed _____ P.L.S. or R.C.E. No. 7237



COUNTY SURVEYOR'S STATEMENT

This Corner Record was received DECEMBER 14, 2015

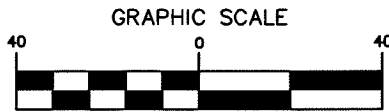
and examined and filed FEBRUARY 3, 2016

Signed [Signature] P.L.S. or R.C.E. No. 7821

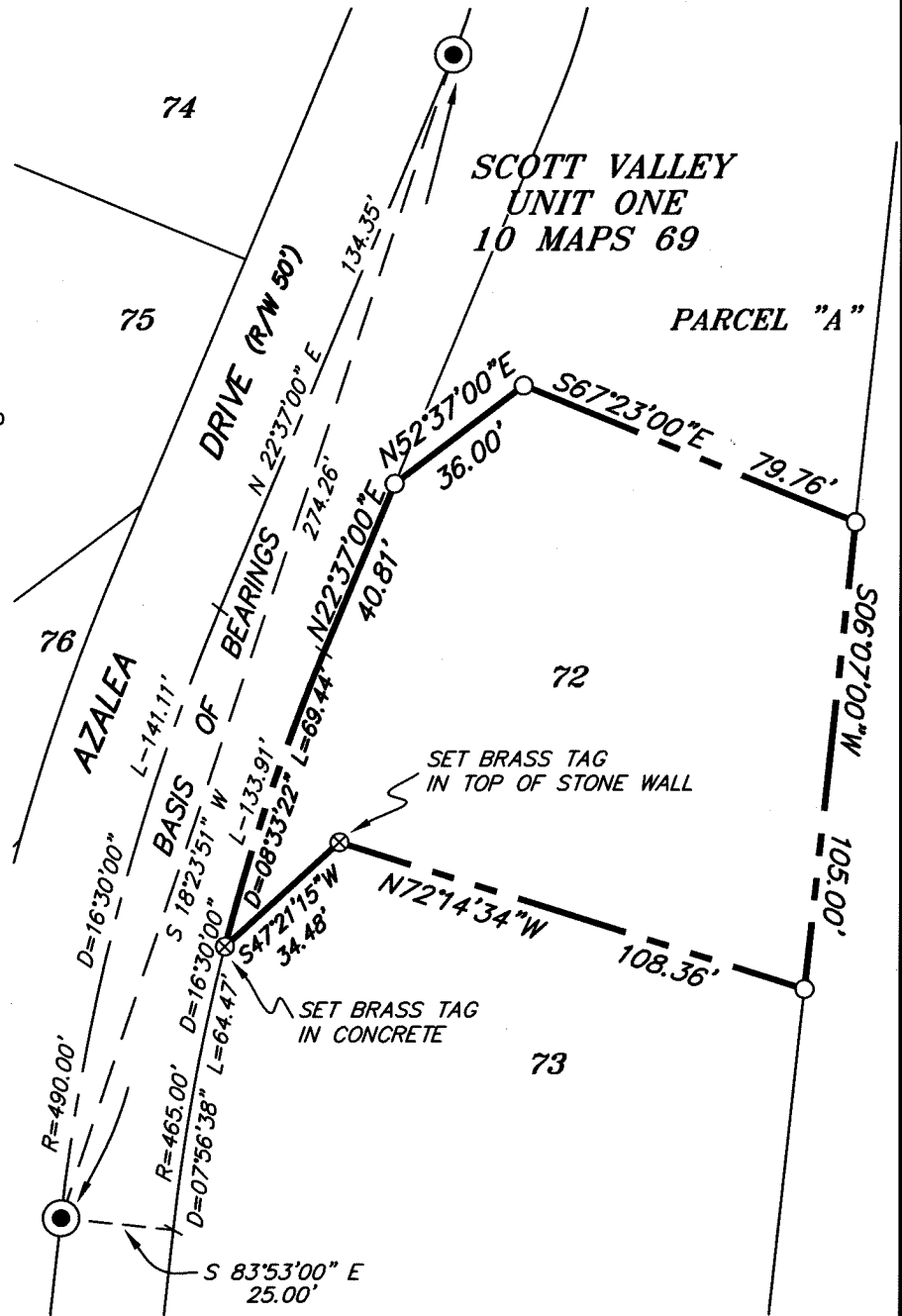
Title County Surveyor



County Surveyor's Comment



(IN FEET)
1 inch = 40 ft.



LEGEND

- FOUND STREET MONUMENT, PIN IN CONC.
- ⊗ SET BRASS TAG, TAGGED LS7237
- SET .5" IRON PIPE, TAGGED LS7237

BASIS OF BEARINGS

S 18°23'51" W BETWEEN FOUND STREET MONUMENTS SHOWN ON RECORD MAP "SCOTT VALLEY, UNIT ONE" FILED IN BOOK 10 OF MAPS, AT PAGE 69, MARIN COUNTY RECORDS.

NOTE

ALL COURSES SHOWN HEREON ARE RECORD AND MEASURED PER 10 MAPS 69, M.C.R.



2300 bethards drive, suite J

santa rosa, california 95405

p 707.542.8513 - f 707.542.1825

www.michaelfordinc.com