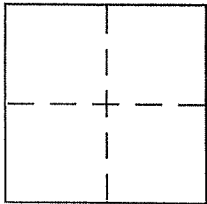


CORNER RECORD

Document Number 33-133-04
City of MILL VALLEY (VICINITY) County of MARIN, California

Brief Legal Description LOT 69, SCOTT VALLEY Unit 1 10 RM 69



CORNER TYPE

Government Corner Control
Meander Property
Rancho Other
Date of Survey July 30, 2003

COORDINATES (Optional)

N. _____
E. _____
Zone _____ NAD27 NAD83
NAD83 Epoch _____
Elev. _____
Vert. Datum: NGVD29 NAVD88
Meas. Units: Metric Imperial

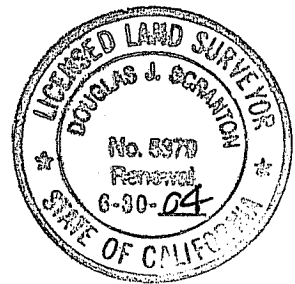
Corner - Left as found Found and tagged Established Reestablished Rebuilt

Identification and type of corner found: Evidence used to identify or procedure used to establish or reestablish the corner:
FROM EXISTING MONUMENTS ON VASCO DRIVE AS SHOWN UPON 10 RM 69 SET LOT CORNERS & MISC. LINE POINTS FOR LOT 69 of MAP of SCOTT Valley Unit 1 (10 RM 69). Refer to sketch on reverse side for details.

A description of the physical condition of the monument as found and as set or reset: set 3/4" IRON PIPE WITH LS BRASS TAG 5379 WITH BRASS NAIL AFFIXED TO TOP OF PIPE & DRIVEN FLUSH WITH SURROUNDING grade (UNLESS NOTED OTHERWISE ON SKETCH)

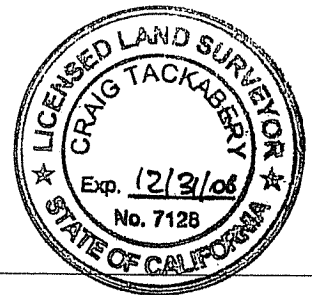
SURVEYOR'S STATEMENT

This Corner Record was prepared by me or under my direction in conformance with the Land Surveyor's Act on AUGUST 1ST 2003
Signed Douglas J. Scranton P.L.S. or R.C.E. No. PLS 5379



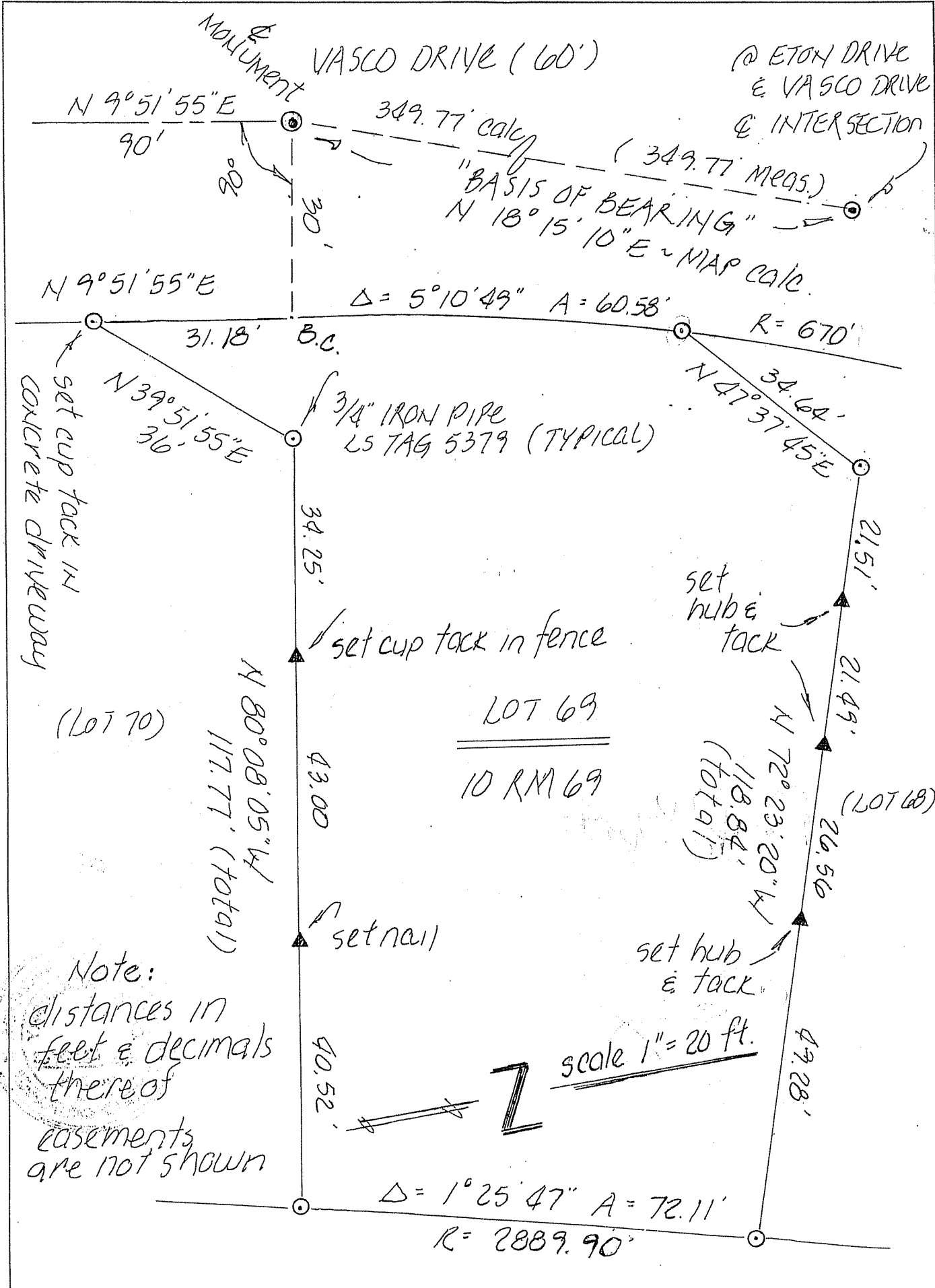
COUNTY SURVEYOR'S STATEMENT

This Corner Record was received AUGUST 6, 2003
and examined and filed AUGUST 21, 2003
Signed _____ P.L.S. or R.C.E. No. 7128
Title COUNTY SURVEYOR



County Surveyor's Comment _____

Prepared by DJ SCRANTON SURVEYING NOVATO CALIFORNIA



@ ETON DRIVE
E VASCO DRIVE
& INTERSECTION

set cup tack in
concrete driveway

set
hub &
tack

set cup tack in fence

set hub
& tack

Note:
distances in
feet & decimals
there of
easements
are not shown