

# CORNER RECORD

Agency Index CR22-058

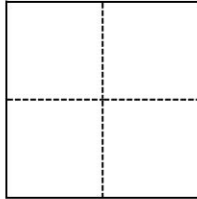
Document Number 033-131-05

City of MILL VALLEY County of MARIN, California

Brief Legal Description LOT "53" AS SHOWN ON THAT CERTAIN MAP ENTITLED, "SCOTT VALLEY UNIT ONE", FILED FOR RECORD AUGUST 4, 1960 IN BOOK 10 OF MAPS, AT PAGE 69, IN THE OFFICE OF THE COUNTY RECORDER OF MARIN, STATE OF CALIFORNIA.

### CORNER TYPE

### COORDINATES (Optional)



- Government Corner
- Meander
- Rancho
- Control
- Property
- Other

Date of Survey 05-06-2022

N. \_\_\_\_\_ E. \_\_\_\_\_

Elevation \_\_\_\_\_

Units  Metric  U.S. Survey Foot

Horizontal Datum \_\_\_\_\_

Zone \_\_\_\_\_ Epoch Date \_\_\_\_\_

Vertical Datum \_\_\_\_\_

Complies with Public Resources Code §§8801-8819

Complies with Public Resources Code §§8890-8902

PLS Act Ref.:  8765(d)  8771  8773  Other:

Corner/Monument:  Left as found  Established  Rebuilt  Pre-Construction

Found and tagged  Reestablished  Referenced  Post-Construction

Narrative of corner identified and monument as found, set, reset, replaced, or removed:

See sheet #2 for description(s):

FOUND CENTERLINE MONUMENTS IN GOOD CONDITION AS SHOWN ON THAT CERTAIN MAP ENTITLED, "SCOTT VALLEY UNIT ONE", FILED IN BOOK 10 OF MAPS, AT PAGE 69. SET 1/2" IRON PIPE TAGGED LS 9565. SEE PAGE TWO FOR DETAILS.

### SURVEYOR'S STATEMENT

This Corner Record was prepared by me or under my direction in conformance with

the Professional Land Surveyors' Act on 1-23-2023.

Signed [Signature] P.L.S. or R.C.E. No. 9565



### COUNTY SURVEYOR'S STATEMENT

This Corner Record was received January 23, 2023

and examined and filed September 28, 2023.

Signed T.W. Park P.L.S. [Redacted] No. 8176

Title County Surveyor

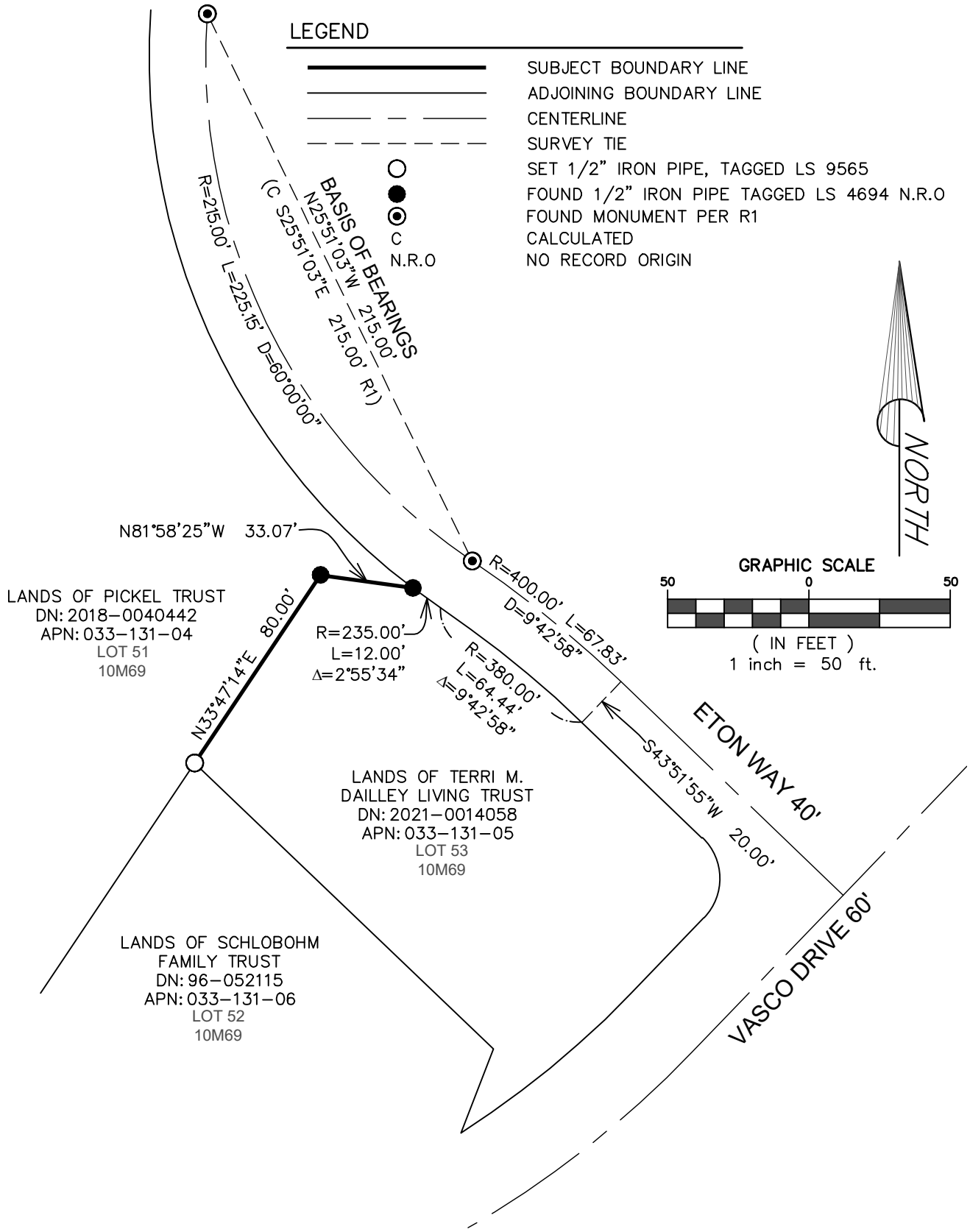
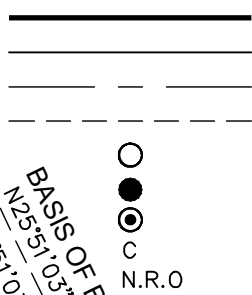
County Surveyor's Comment



REFERENCES

- (R1) MAP OF SCOTT VALLEY UNIT ONE, 10 RM 069
- (R2) CORNER RECORD # 033-131-04

LEGEND



NOTE: ALL DIMENSIONS ARE RECORD AND MEASURED UNLESS OTHERWISE NOTED.