

# CORNER RECORD

Document Number A.P.# 033-131-04

City of MILL VALLEY

County of MARIN, California

Brief Legal Description LOT 51 10 R.M. 69

### CORNER TYPE

Government Corner  Control   
 Meander  Property   
 Rancho  Other   
 Date of Survey 7/3/02

### COORDINATES (Optional)

N. \_\_\_\_\_  
 E. \_\_\_\_\_  
 Zone \_\_\_\_\_ NAD27  NAD83   
 NAD83 Epoch \_\_\_\_\_  
 Elev. \_\_\_\_\_  
 Vert. Datum: NGVD29  NAVD88   
 Meas. Units: Metric  Imperial

Corner- Left as found  Found and tagged  Established  Reestablished  Rebuilt

Identification and type of corner found: Evidence used to identify or procedure used to establish or reestablish the corner:  
ESTABLISHED CORNERS BETWEEN LOTS 50 AND 51 FROM STREET MONUMENTS AS SHOWN ON 10 R.M. 69.

A description of the physical condition of the monument as found and as set or reset: SEE SHEET 2.

### SURVEYOR'S STATEMENT

This Corner Record was prepared by me or under my direction in conformance with  
 the Land Surveyor's Act on JULY 8 2002  
 Signed Lawrence P Doyle P.L.S. or R.C.E. No. P.L.S. 4694

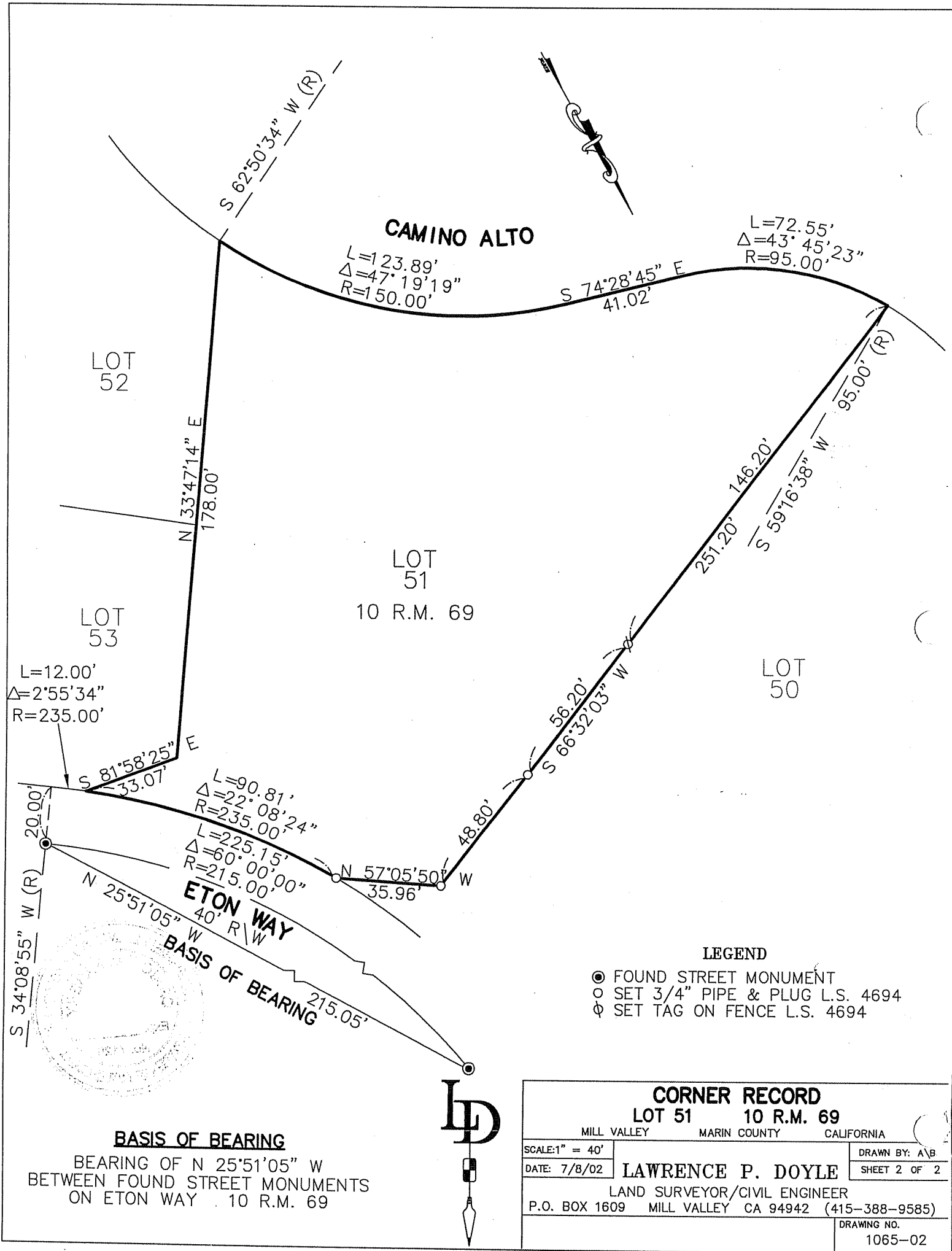


### COUNTY SURVEYOR'S STATEMENT

This Corner Record was received AUGUST 2, 2002  
 and examined and filed AUGUST 5, 2002  
 Signed Coy P.L.S. or R.C.E. No. 7128  
 Title DEPUTY



County Surveyor's Comment \_\_\_\_\_



**CAMINO ALTO**

L=123.89'  
 $\Delta=47^{\circ}19'19''$   
 R=150.00'

L=72.55'  
 $\Delta=43^{\circ}45'23''$   
 R=95.00'

LOT 52

LOT 51  
 10 R.M. 69

LOT 53

LOT 50

L=12.00'  
 $\Delta=2^{\circ}55'34''$   
 R=235.00'

L=90.81'  
 $\Delta=22^{\circ}08'24''$   
 R=235.00'

L=225.15'  
 $\Delta=60^{\circ}00'00''$   
 R=215.00'

S 34°08'55" W (R)  
 20.00'

N 25°51'05" W  
**ETON WAY**  
 40' R/W  
**BASIS OF BEARING**  
 215.05'

**LEGEND**

- ⊙ FOUND STREET MONUMENT
- SET 3/4" PIPE & PLUG L.S. 4694
- ⊕ SET TAG ON FENCE L.S. 4694

**BASIS OF BEARING**  
 BEARING OF N 25°51'05" W  
 BETWEEN FOUND STREET MONUMENTS  
 ON ETON WAY 10 R.M. 69

**LD**

<b>CORNER RECORD</b>		
LOT 51 10 R.M. 69		
MILL VALLEY MARIN COUNTY CALIFORNIA		
SCALE: 1" = 40'	<b>LAWRENCE P. DOYLE</b>	DRAWN BY: A/B
DATE: 7/8/02		SHEET 2 OF 2
LAND SURVEYOR/CIVIL ENGINEER		
P.O. BOX 1609 MILL VALLEY CA 94942 (415-388-9585)		
		DRAWING NO. 1065-02