

CORNER RECORD

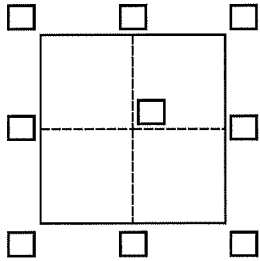
Agency Index

DPW #19-015

Document Number 033-191-04

City of Mill Valley County of Marin, California

Brief Legal Description Lot 68, Scott Highlands, Unit Two, filed in Book 12 of Record Maps at Page 100



CORNER TYPE

Government Corner Control
 Meander Property
 Rancho Other

Date of Survey February 19, 2019

COORDINATES (Optional)

N. _____ E. _____

Elevation _____

Units Metric U.S. Survey Foot

Horizontal Datum _____

Zone _____ Epoch Date _____

Vertical Datum _____

Complies with Public Resources Code §§8801-8819

Complies with Public Resources Code §§8890-8902

PLS Act Ref.: 8765(d) 8771 8773 Other:

Corner/Monument: Left as found Established Rebuilt Pre-Construction

Found and tagged Reestablished Referenced Post-Construction

Narrative of corner identified and monument as found, set, reset, replaced, or removed:

See sheet #2 for description(s):

Found standard street monuments in Escalon Drive per 12 R.M. 100 where found in record position. These monuments further agreed with the position of a found 1/2" pipe tagged L.S. 5103, origin unknown. Monuments were set at the remaining corners as shown on the diagram on Sheet 2.

SURVEYOR'S STATEMENT

This Corner Record was prepared by me or under my direction in conformance with

the Professional Land Surveyors' Act on February 22, 2019

Signed Michael E. Ford P.L.S. or ~~R.C.E.~~ No. P.L.S. 7237



COUNTY SURVEYOR'S STATEMENT

This Corner Record was received MARCH 15, 2019

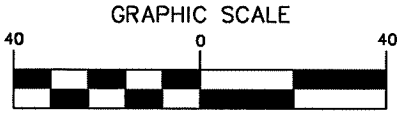
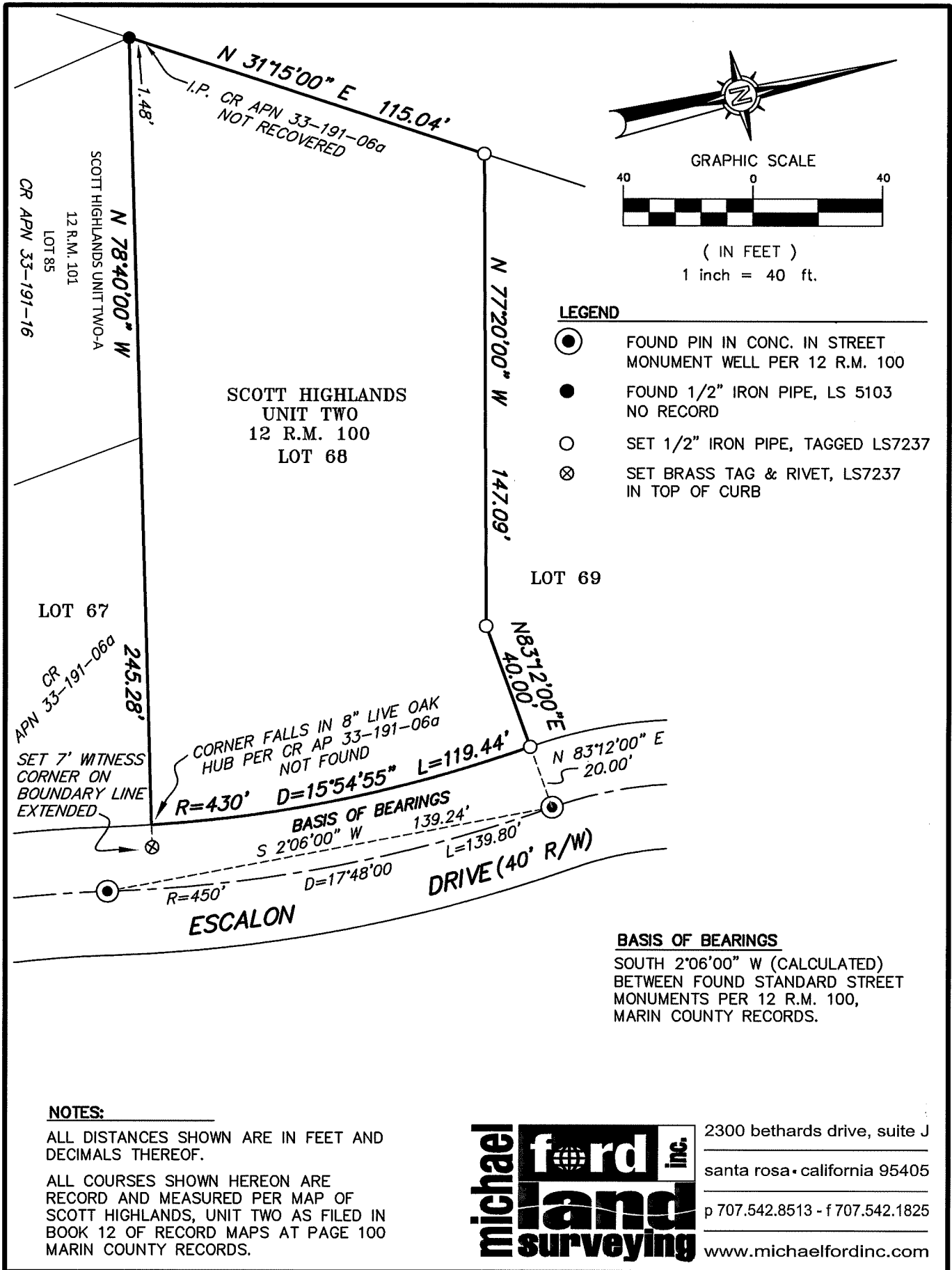
and examined and filed JULY 29, 2019

Signed J. Ford P.L.S. or R.C.E. No. 9292

Title DEPUTY C.S.

County Surveyor's Comment





(IN FEET)
1 inch = 40 ft.

LEGEND

- FOUND PIN IN CONC. IN STREET MONUMENT WELL PER 12 R.M. 100
- FOUND 1/2" IRON PIPE, LS 5103 NO RECORD
- SET 1/2" IRON PIPE, TAGGED LS7237
- ⊗ SET BRASS TAG & RIVET, LS7237 IN TOP OF CURB

BASIS OF BEARINGS

SOUTH 2°06'00" W (CALCULATED)
BETWEEN FOUND STANDARD STREET MONUMENTS PER 12 R.M. 100, MARIN COUNTY RECORDS.

NOTES:

ALL DISTANCES SHOWN ARE IN FEET AND DECIMALS THEREOF.

ALL COURSES SHOWN HEREON ARE RECORD AND MEASURED PER MAP OF SCOTT HIGHLANDS, UNIT TWO AS FILED IN BOOK 12 OF RECORD MAPS AT PAGE 100 MARIN COUNTY RECORDS.

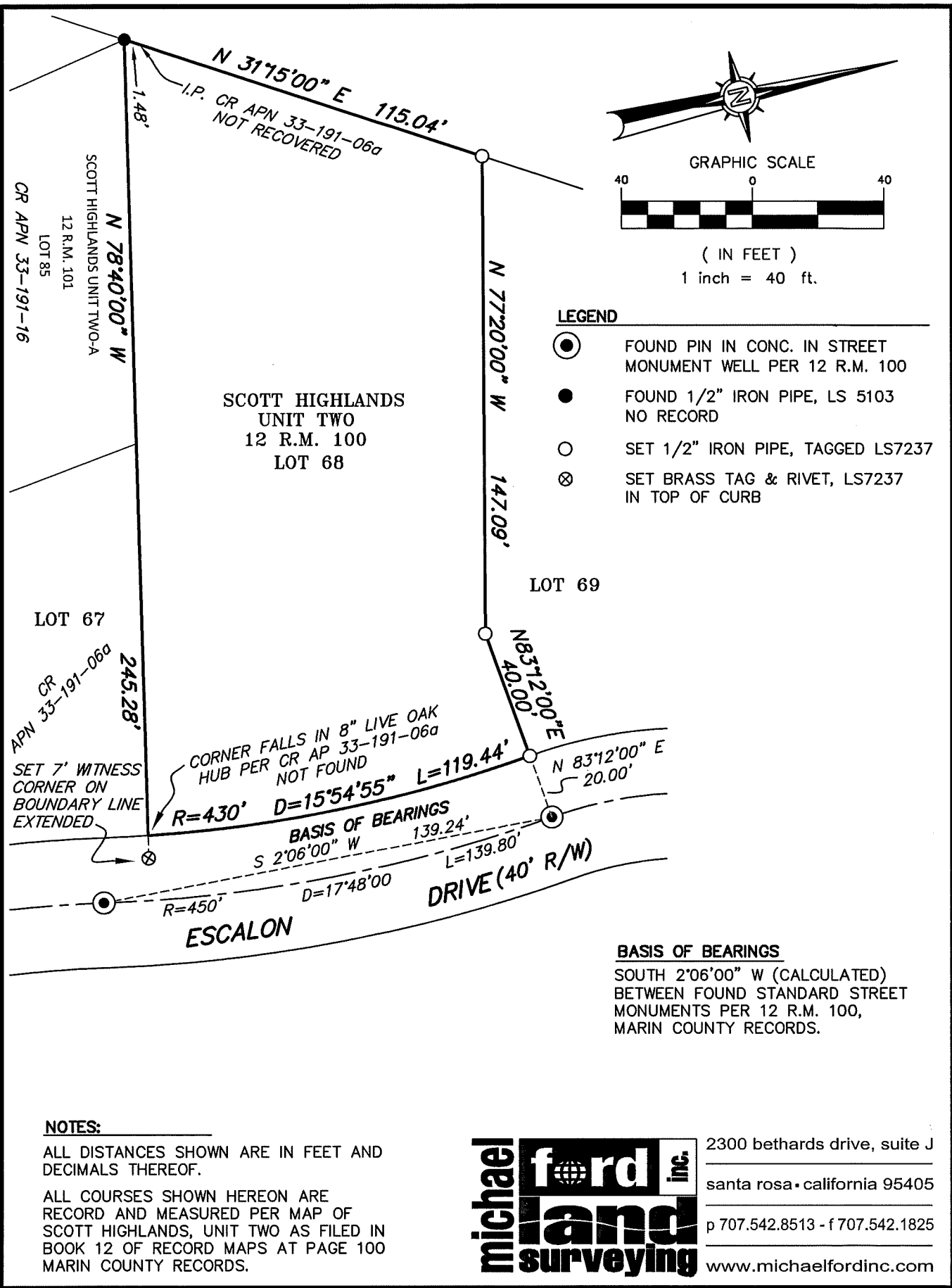


2300 bethards drive, suite J

santa rosa • california 95405

p 707.542.8513 - f 707.542.1825

www.michaelfordinc.com



2300 bethards drive, suite J
 santa rosa • california 95405
 p 707.542.8513 - f 707.542.1825
 www.michaelfordinc.com