

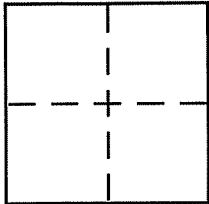
CORNER RECORD

Document Number AP# 033-073-10

City of Mill Valley

County of Marin, California

Brief Legal Description LOT 1, 5 MAPS 103



CORNER TYPE

Government Corner Control
 Meander Property
 Rancho Other
 Date of Survey _____

COORDINATES (Optional)

N. _____
 E. _____
 Zone _____ NAD27 NAD83
 NAD83 Epoch _____
 Elev. _____
 Vert. Datum: NGVD29 NAVD88
 Meas. Units: Metric Imperial

Corner - Left as found Found and tagged Established Reestablished Rebuilt

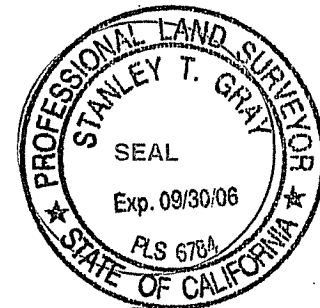
Identification and type of corner found: Evidence used to identify or procedure used to establish or reestablish the corner:
Found monuments: Found railroad spike, found standard street monument

A description of the physical condition of the monument as found and as set or reset:
Six monuments set: ALL 5/8 rebar with plastic cap L.S. 6784

SURVEYOR'S STATEMENT

This Corner Record was prepared by me or under my direction in conformance with the Land Surveyor's Act on 9/7/06

Signed [Signature] P.L.S or R.C.E. No. 6784



COUNTY SURVEYOR'S STATEMENT

This Corner Record was received 9-11-06

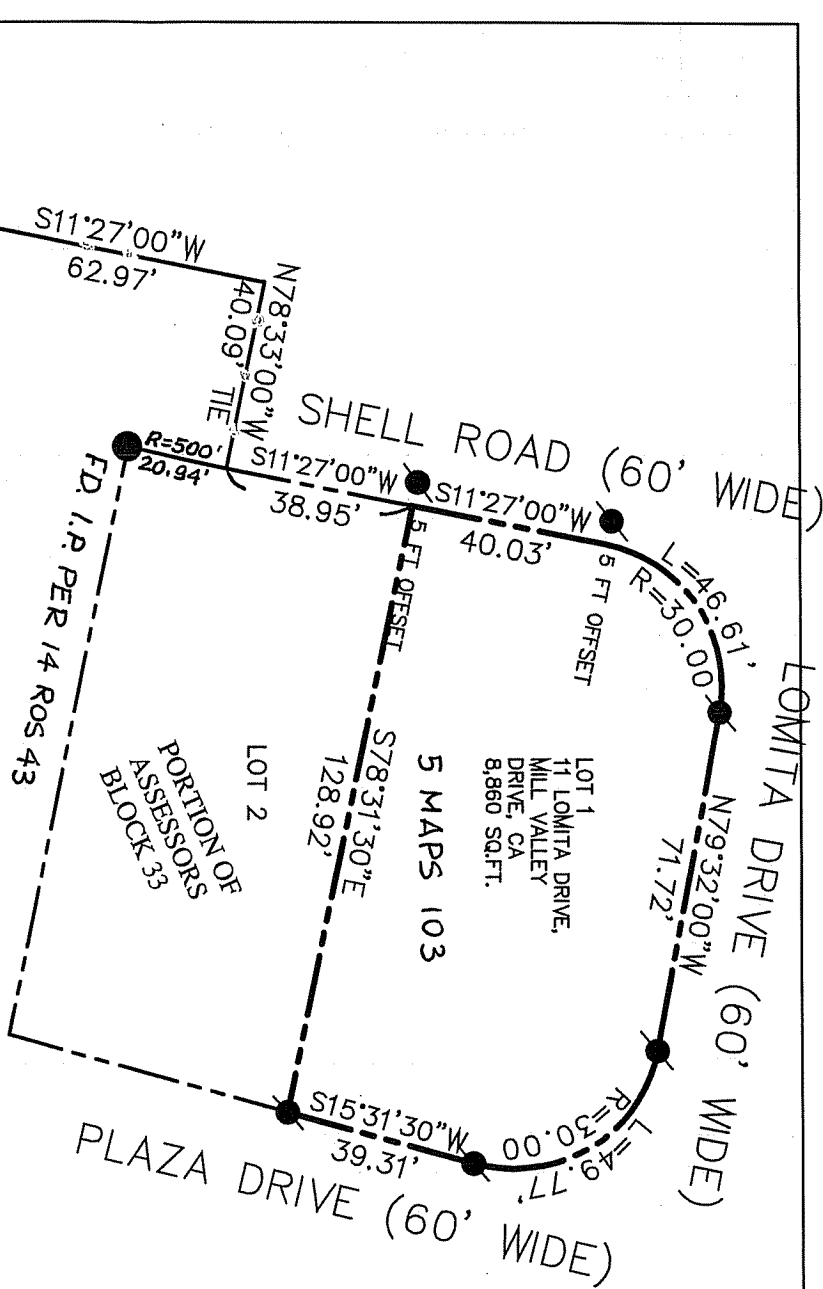
and examined and filed OCTOBER 26, 2006

Signed [Signature] P.L.S or R.C.E. No. 7128

Title COUNTY SURVEYOR



County Surveyor's Comment _____

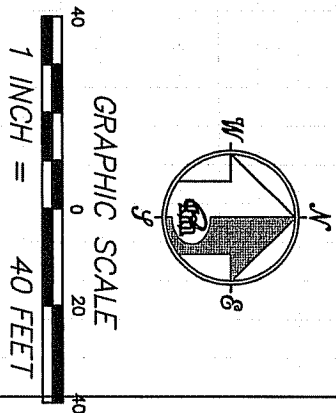


REFERENCES

- [A] R.O.S. MAP OF "SHELL ROAD RIGHT OF WAY AT LOMITA DRIVE, MILL VALLEY, CALIFORNIA", FILED FOR RECORD, 26TH OCTOBER, 1977 IN VOLUME 14 OF MAPS, AT PAGE 43, MARIN COUNTY RECORDS.
- [B] "PLAT ALTO TRACT SUBDIVISION MAP NO. 3, MARIN COUNTY, CALIFORNIA", FILED FOR RECORD JUNE 20, 1944 IN VOLUME 5 OF MAPS, AT PAGE 103, MARIN COUNTY RECORDS.
- [C] RECORD OF SURVEY "LANDS OF Mc CLAIN" FILED JUNE 3RD, 2003 IN BOOK 03 OF MAPS, AT PAGE 143, MARIN COUNTY RECORDS.

LEGEND

- FOUND CITY MONUMENT [A]
 - SET 5/8" REBAR WITH CAP, PLS 6784
- B.O.B. BASIS OF BEARING
- NOTE
RECORD=MEASURED



CORNER RECORD



1812 UNION STREET
SAN FRANCISCO, CA 94123
(415) 440-4131
info@meridiansurvey.com

777 GRAND AVENUE, SUITE 202
SAN RAFAEL, CA 94901
(415) 456-5450