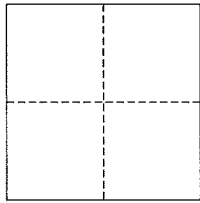


CORNER RECORD

City of Mill Valley

Document Number AP# 033-071-16
County of Marin, California

Brief Legal Description Lot 47, 5 RM 12



CORNER TYPE

Government Corner Control
Meander Property
Rancho Other
Date of Survey November 20, 2012

COORDINATES (Optional)

N. _____
E. _____
Zone _____ NAD27 NAD83
NAD83 Epoch _____
Elev. _____
Vert. Datum: NGVD29 NAVD88
Meas. Units: Metric Imperial

Corner- Left as found Found and tagged Established Reestablished Rebuilt

Identification and type of corner found: Evidence used to identify or procedure used to establish or reestablish the corner:
Found 1" Iron Pins, labeled as Railroad Spikes, along Western side of parcel per 13 RS 53.

A description of the physical condition of the monument as found and as set or reset: All Property Line points were set as shown hereon, per 13 RS 53.

SURVEYOR'S STATEMENT

This corner Record was prepared by me or under my direction in conformance with

the Land Surveyor's Act on February 1, 2013

Signed [Signature] P.L.S. or R.C.E. No. 30465

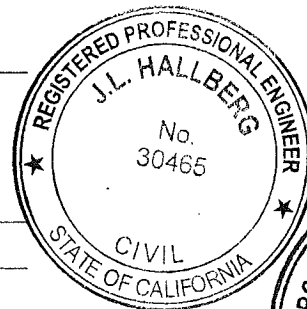
COUNTY SURVEYOR'S STATEMENT

This Corner Record was received FEBRUARY 6, 2013

and examined and filed FEBRUARY 15, 2013

Signed [Signature] P.L.S. or R.C.E. No. 7821

Title DEPUTY COUNTY SURVEYOR



County Surveyor's Comment

Lands of Hochstoeger
 DN 1998-072914
 AP#033-071-39

Fnd.1"
 IronPin
 per R1

LEGEND

- FOUND IP & PLUG, AS NOTED
- SET IP & PLUG, RCE 30465
- R1 13 RS 53

Fnd.IP
 RCE12510
 per R1

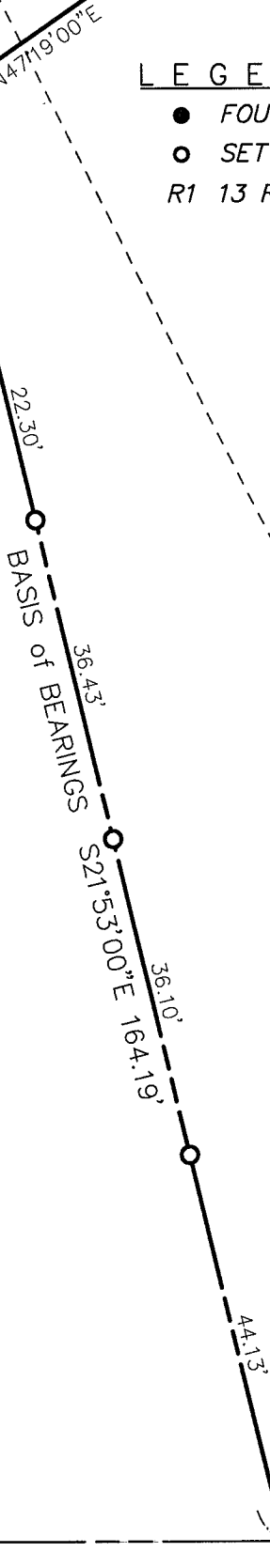
Lands of Hedge/TR
 DN 2003-133389
 AP#033-071-16

Lot 47
 Block A
 5 RM 12

Lands of Welter&Mueller
 DN 2007-025668
 AP#033-071-38

Lot 45
 Block A
 5 RM 12

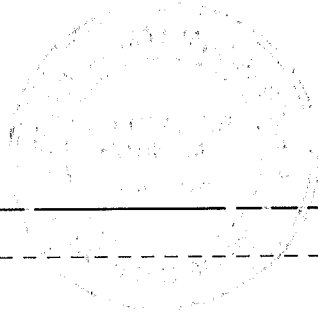
BASIS of BEARINGS



Scale: 1" = 20'

SHELL RD. (40'R/W)

Note: All distances are in feet and decimals thereof.



| | | | |
|--------|----------|----------|-------|
| SHEET | 1 | OF | 1 |
| SCALE: | 1" = 20' | DESIGN: | EDL |
| DATE: | Jan 2013 | DRAWN: | PR |
| FILE: | 2012-103 | CHECKED: | J.L.H |

J.L. ENGINEERING
 CIVIL ENGINEERS-LAND SURVEYORS
 1539 4th ST., SAN RAFAEL, CA. 94901 (415) 457-6647

Corner Record
 Lands of Hedge /TR - 20 Shell Rd.
 APN 033-071-16, Mill Valley, Marin County, CA