

CORNER RECORD

Document Number APN: 033-011-51

City of CORTE MADERA, County of MARIN, California

Brief Legal Description: PARCEL 2 MAP ENTITLED "PARCEL MAP OF DIVISION OF MCCOLLOM PROPERTY, MEADOWSWEET VALLEY, ADJACENT TO CORTE MADERA, MARIN COUNTY, CALIF.", VOL. 14 P.M. 20

CORNER TYPE

Government Corner [] Control []
 Meander [] Property
 Rancho [] Other []
 Date of Survey 8/28/09

COORDINATES (Optional)

N: _____
 E: _____
 Zone: _____ NAD 27 [] NAD 83 []
 Elev: _____
 Vert. Datum: NGVD29 [] NAVD88 []
 Meas. Units: Metric [] Imperial []

CORNER -- LEFT AS FOUND FOUND AND TAGGED ESTABLISHED REESTABLISHED REBUILT

Identification and type of corner found: Evidence used to identify or procedure used to establish or reestablish the corner:

FOUND MONUMENTS PER VOLUME 14 OF PARCEL MAPS AT PAGE 20.

A description of the physical condition of the monument as found and as set or reset: _____

ORIGINAL CORNERS NOT FOUND. SET POINTS AS SHOWN ON REVERSE.

SURVEYOR'S STATEMENT:

The corner record was prepared by me or under my direction in conformance with

the Land Surveyors' Act on SEPTEMBER 18TH 2009

Signed: *Michael S. Lemke* L.S.# 3602



COUNTY SURVEYOR'S STATEMENT:

The corner record was received OCTOBER 5, 2009

and examined and filed OCTOBER 14, 2009

Signed: *[Signature]* R.C.E. or L.S. No. 7128

Title: COUNTY SURVEYOR



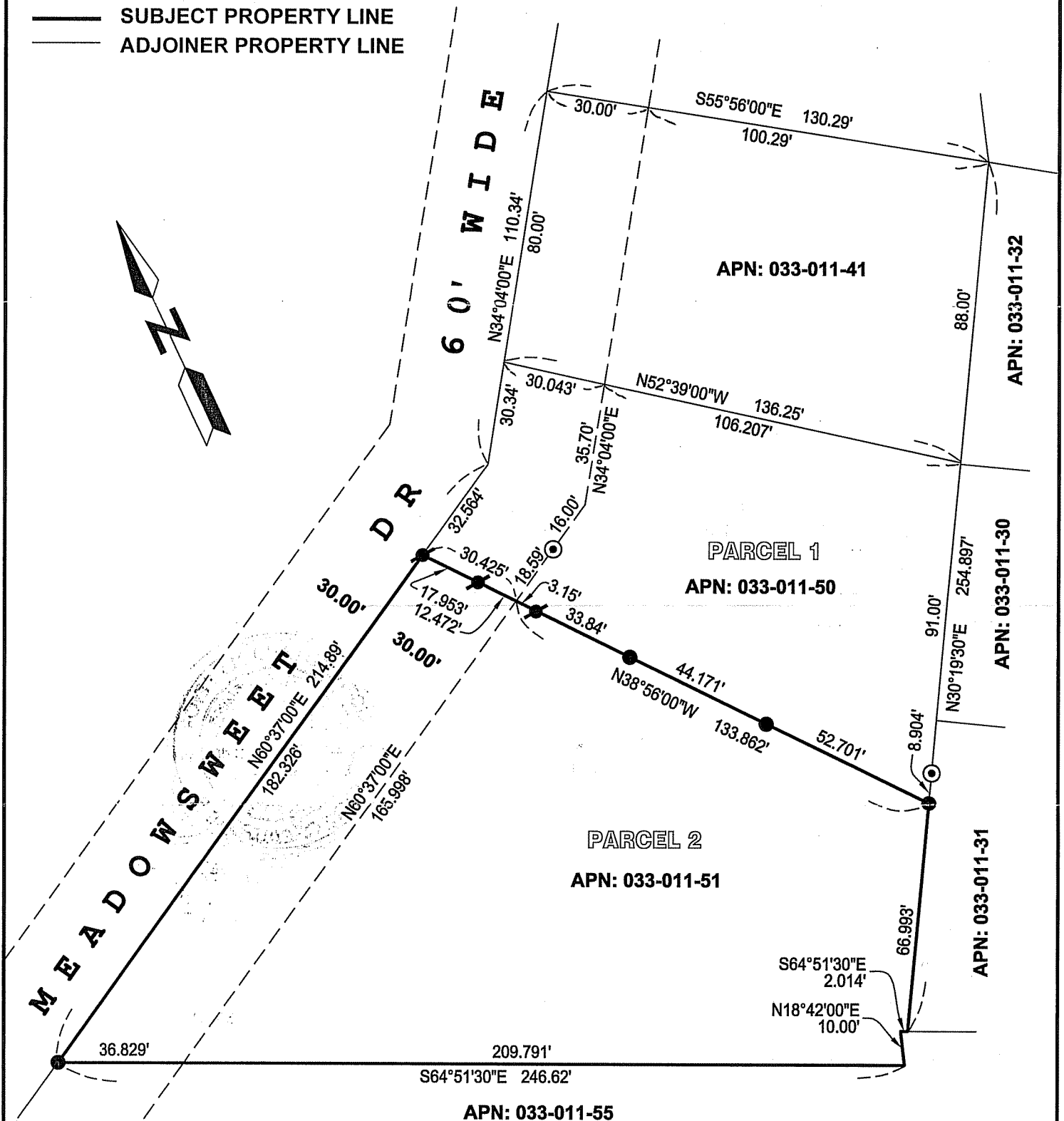
COUNTY SURVEYOR'S COMMENT: _____

LEGEND

- ⊙ FOUND 1" PIPE & NAIL PER R1
- SET # 4 REBAR & CAP LS 3602
- ⚓ SET NAIL & TAG LS 3602
- R1 PARCEL MAP, 14 P.M. 20
- SUBJECT PROPERTY LINE
- - - ADJOINER PROPERTY LINE

AMERICAN LAND SURVEYING, INC.
 224 Taraval St, # 4, San Francisco, Ca 94116
 Ph: (415) 300-7467 Fx: (415) 665-7467

CORNER RECORD



ORIGINAL SCALE: 1" = 40'

