

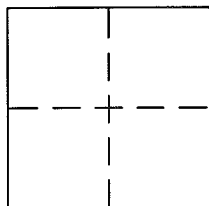
CORNER RECORD

Document Number APN 033-011-49

City of CORTE MADERA

County of MARIN, California

Brief Legal Description PARCEL 1 OF "PARCEL MAP" FILED FOR RECORD SEPTEMBER 28, 1976 IN BOOK 12 OF MAPS, AT PAGE 97, MARIN COUNTY RECORDS.



CORNER TYPE

Government Corner Control
Meander Property
Rancho Other
Date of Survey 11/24/2015

COORDINATES (Optional)

N. _____
E. _____
Zone _____ NAD27 NAD83
NAD83 Epoch _____
Elev. _____
Vert. Datum: NGVD29 NAVD88
Meas. Units: Metric Imperial

Corner - Left as found Found and tagged Established Reestablished Rebuilt

Identification and type of corner found: Evidence used to identify or procedure used to establish or reestablish the corner:
SEE PAGE 2

A description of the physical condition of the monument as found and as set or reset:
SEE PAGE 2

SURVEYOR'S STATEMENT

This Corner Record was prepared by me or under my direction in conformance with the Land Surveyor's Act on 2/11 2016

Signed [Signature] P.L.S. or R.C.E. No. 6784

COUNTY SURVEYOR'S STATEMENT

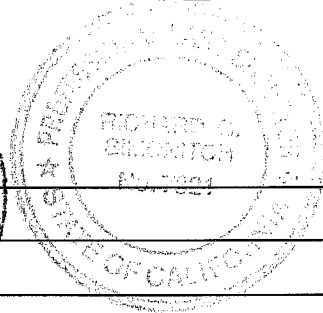
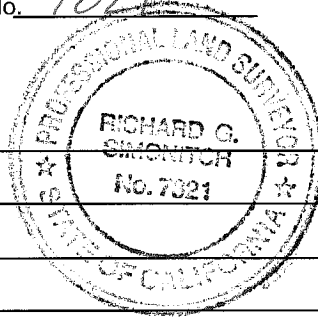
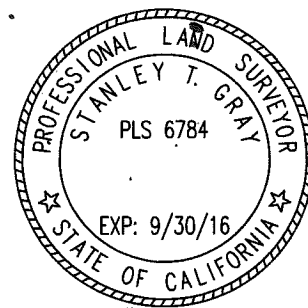
This Corner Record was received MARCH 16, 2016

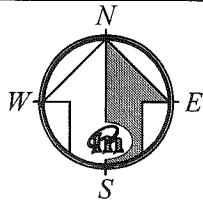
and examined and filed APRIL 25, 2016

Signed [Signature] P.L.S. or R.C.E. No. 7821

Title County Surveyor

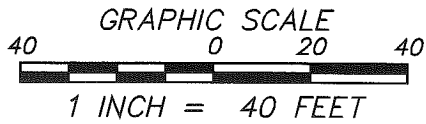
County Surveyor's Comment _____



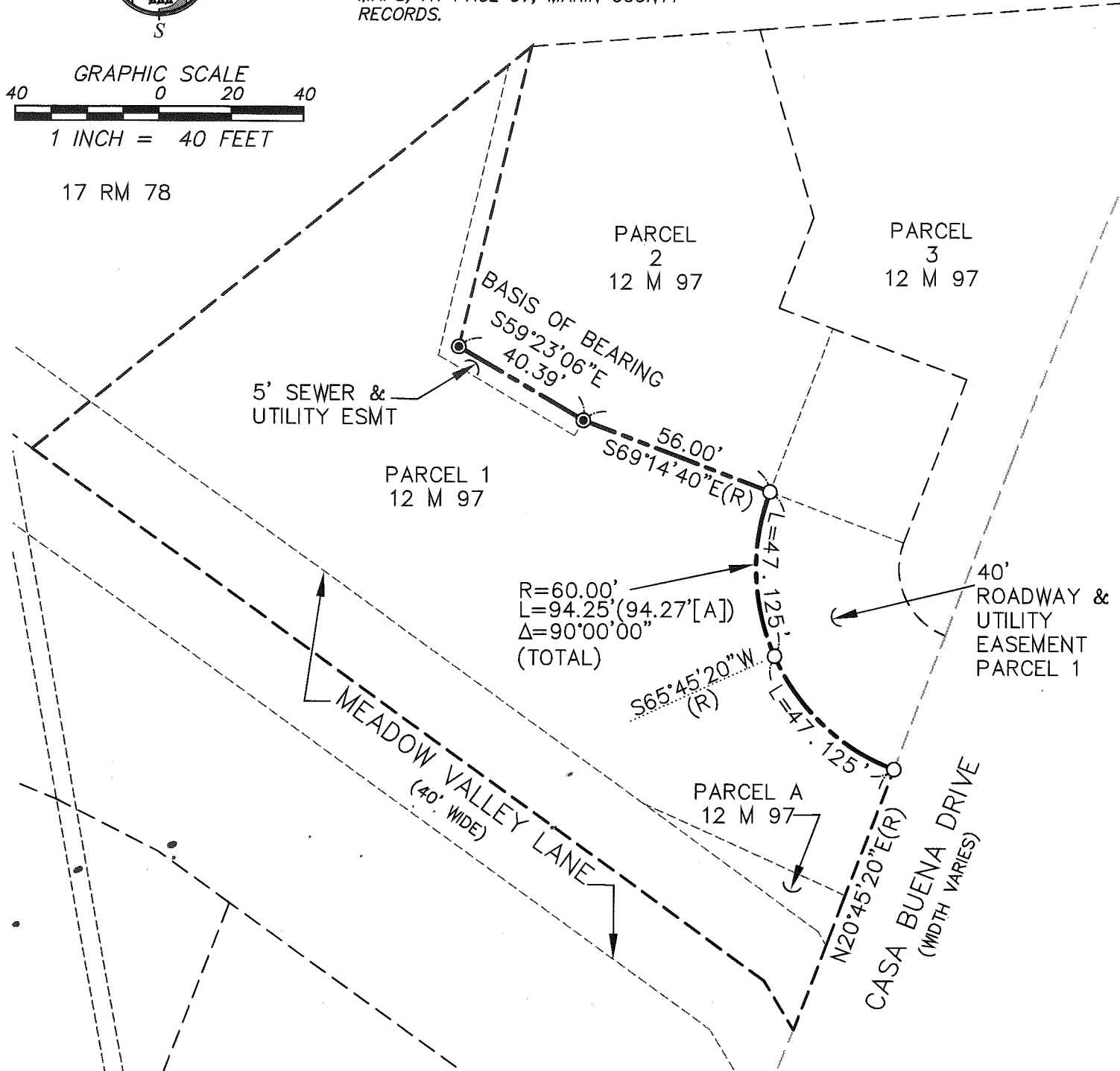


REFERENCE

[A] "PARCEL MAP" FILED FOR RECORD
 SEPTEMBER 28, 1976 IN BOOK 12 OF
 MAPS, AT PAGE 97, MARIN COUNTY
 RECORDS.



17 RM 78

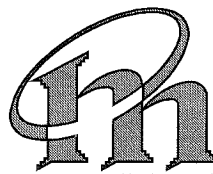


LEGEND

- PROPERTY LINE
- EASEMENT LINE
- ADJOINER LINE

- FOUND MONUMENT PER [A]
- SET NAIL & TAG, PLS 6784
- (C) CALCULATED

NOTE:
 RECORD=MEASURED.



CORNER RECORD

MERIDIAN SURVEYING
 ENGINEERING, INC.

2958 VAN NESS AVENUE (15120) 777 GRAND AVENUE, #202
 SAN FRANCISCO, CA 94109 SAN RAFAEL, CA 94901
 (415) 440-4131 (415) 456-5450
 surveyrequest@meridiansurvey.com