

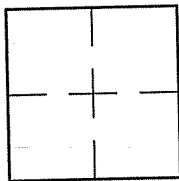
CORNER RECORD

Document Number A.P.# 030-271-68

City of MILL VALLEY

County of MARIN, California

Brief Legal Description PARCEL C, 14 R.M. 92



CORNER TYPE **COORDINATES (Optional)**

Government Corner Control

Meander Property

Rancho Other

Date of Survey 00/00/00

N. _____
 E. _____
 Zone NAD27 NAD83
 NAD83 Epoch _____
 Elev. _____
 Vert. Datum: NGVD29 NAVD88
 Meas. Units: Metric Imperial

Corner- Left as found Found and tagged Established Reestablished Rebuilt

Identification and type of corner found: Evidence used to identify or procedure used to establish or reestablish the corner:

REESTABLISHED CORNERS OF PARCEL C, ACCORDING TO FOUND MONUMENTS PER 14 R.M. 92

AS SHOWN ON SHEET 2

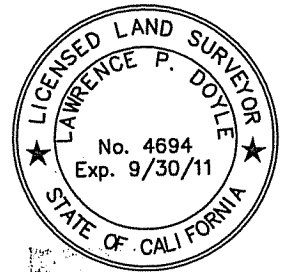
A description of the physical condition of the monument as found and as set or reset: SEE SHEET 2.

SURVEYOR'S STATEMENT

This Corner Record was prepared by me or under my direction in conformance with

the Land Surveyor's Act on OCTOBER 19, 2009

Signed Lawrence P Doyle P.L.S. or R.C.E. No. P.L.S. 4694



COUNTY SURVEYOR'S STATEMENT

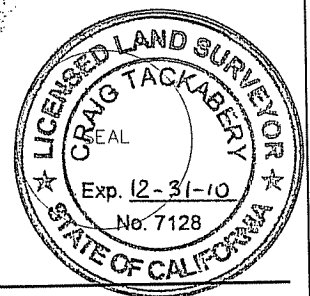
This Corner Record was received OCTOBER 21, 2009

and examined and filed DECEMBER 2, 2009

Signed Craig Tackabery P.L.S. or R.C.E. No. 7128

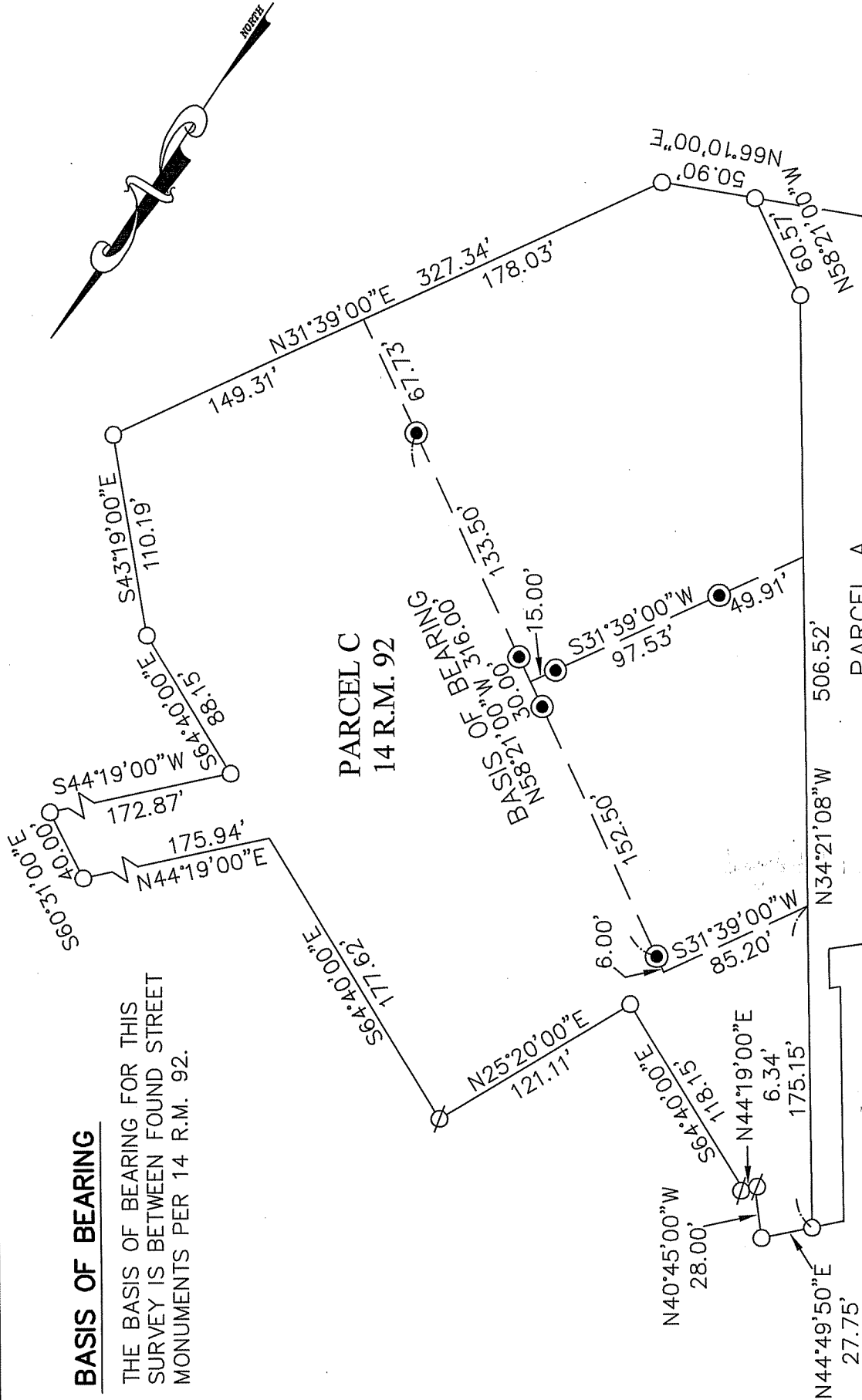
Title COUNTY SURVEYOR

County Surveyor's Comment _____



BASIS OF BEARING

THE BASIS OF BEARING FOR THIS SURVEY IS BETWEEN FOUND STREET MONUMENTS PER 14 R.M. 92.



LEGEND

- FOUND STREET MONUMENT
- SET REBAR & CAP, L.S. 4694 CORNERS WERE SET 2/16/1995.
- ⊗ SET NAIL & TAG, L.S. 4694

NOTE

FOUND STREET MONUMENT CORNERS WERE SET 2/16/1995.



CORNER RECORD PARCEL C, 14 R.M. 92 MILL VALLEY MARIN COUNTY CALIFORNIA		DRAWN BY: SHEET 1 OF 1
SCALE: 1" = 80'	DATE: 10/19/09	LAWRENCE P. DOYLE LAND SURVEYOR/CIVIL ENGINEER
100 HELENS LANE MILL VALLEY CA 94941 (415-388-9585)		DRAWING NO. 95-3113-CR