

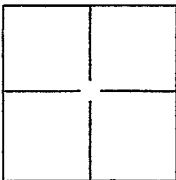
CORNER RECORD

Document Number APN 030-241-04

City of Mill Valley

County of Marin, California

Brief Legal Description Lot 160, Map of Enchanted Knolls Unit Four; Bk 10 of Maps Pg 26, Marin County Records



CORNER TYPE

Government Corner Control
 Meander Property
 Rancho Other

Date of Survey Nov. 14, 2012

COORDINATES(Optional)

N. _____
 E. _____
 Zone _____ NAD27 NAD83
 NAD83 Epoch _____
 Elev. _____
 Vert. Datum: NGVD29 NADV88
 Meas. Units: Metric Imperial

Corner - Left as found Found and tagged Established Reestablished Rebuilt

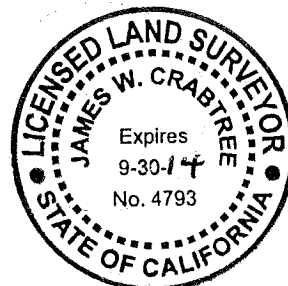
Identification and type of corner found: Evidence used to identify or procedure used to establish or reestablish the corner:
 Ties shown on that Record of Survey filed in Book 33 of Surveys at Page 24, M.C.R. of street monuments were used to reestablish the lot corners of Lot 166 as shown on that map entitled "Map of Enchanted Knolls Unit Four", filed in Book 10 of Maps at pages 25-26, M.C.R. Street monuments found were standard street monument wells with punched 2" brass disc inside one and a nail set in concrete for the other. One street monument well had no monument inside.

A description of the physical condition of the monument as found and as set or reset: Set 1/2" iron pipes stamped: "Crabtree LS 4793".

SURVEYOR'S STATEMENT

This Corner Record was prepared by me or under my direction in conformance with the Land Surveyor's Act on DECEMBER 7, 2012.

Signed [Signature] P.L.S. or R.C.E. No.: PLS 4793



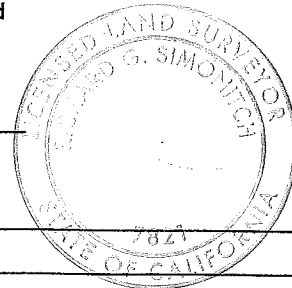
COUNTY SURVEYOR'S STATEMENT

This Corner Record was received DECEMBER 11, 2012 and examined and filed JANUARY 9, 2013

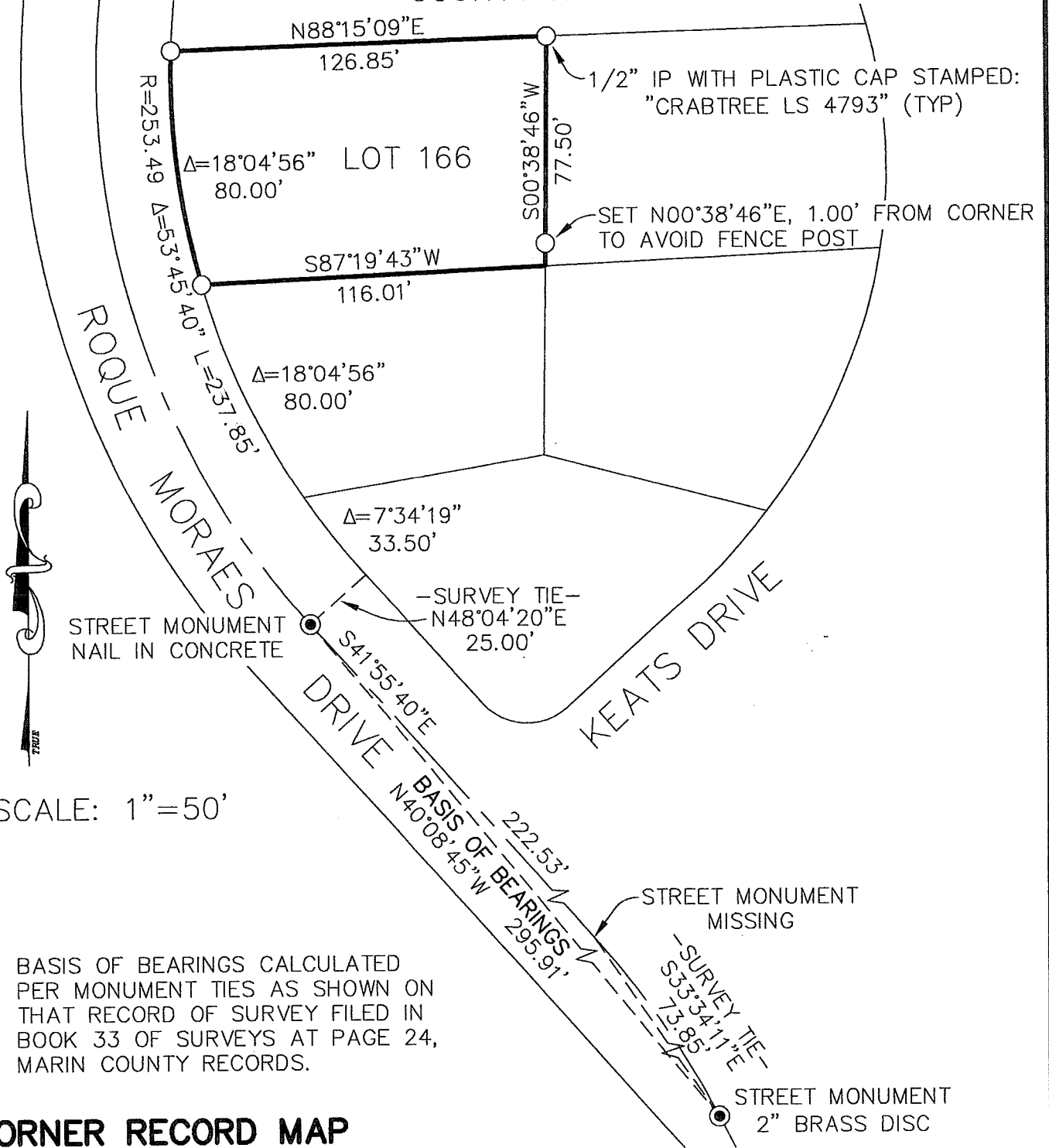
Signed [Signature] P.L.S. or R.C.E. No.: 7821

Title DEPUTY COUNTY SURVEYOR

County Surveyor's Comment _____



MAP OF ENCHANTED KNOLLS UNIT FOUR
 BOOK 10 OF MAPS PAGE 26, MARIN
 COUNTY RECORDS



SCALE: 1"=50'

BASIS OF BEARINGS CALCULATED
 PER MONUMENT TIES AS SHOWN ON
 THAT RECORD OF SURVEY FILED IN
 BOOK 33 OF SURVEYS AT PAGE 24,
 MARIN COUNTY RECORDS.

CORNER RECORD MAP

SHOWING
 LANDS OF DRURY
 143 ROQUE MORAES,
 MILL VALLEY, CA
 APN 030-241-04

PREPARED
 BY:

OCTOBER, 2012



P.O. BOX 2039
 HEALDSBURG, CALIFORNIA
 (707) 433-6041 95448