

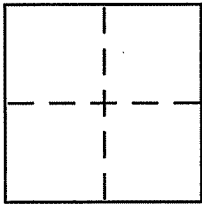
CORNER RECORD

Document Number APN 30-232-06

City of Mill Valley

County of Marin, California

Brief Legal Description Lot 154 of 10 RM 11



CORNER TYPE

- Government Corner Control
- Meander Property
- Rancho Other
- Date of Survey _____

COORDINATES (Optional)

N. _____
 E. _____
 Zone _____ NAD27 NAD83
 NAD83 Epoch _____
 Elev. _____
 Vert. Datum: NGVD29 NAVD88
 Meas. Units: Metric Imperial

Corner - Left as found Found and tagged Established Reestablished Rebuilt

Identification and type of corner found: Evidence used to identify or procedure used to establish or reestablish the corner:

See Sheet 2

A description of the physical condition of the monument as found and as set or reset:

See Sheet 2

SURVEYOR'S STATEMENT

This Corner Record was prepared by me or under my direction in conformance with the Land Surveyor's Act on 6/5/08

Signed [Signature] P.L.S or R.C.E. No. 6784



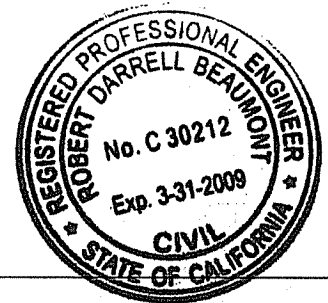
COUNTY SURVEYOR'S STATEMENT

This Corner Record was received 7-21-08

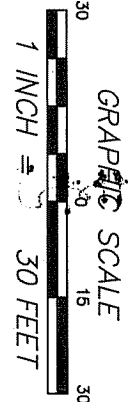
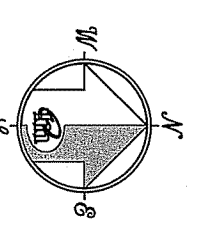
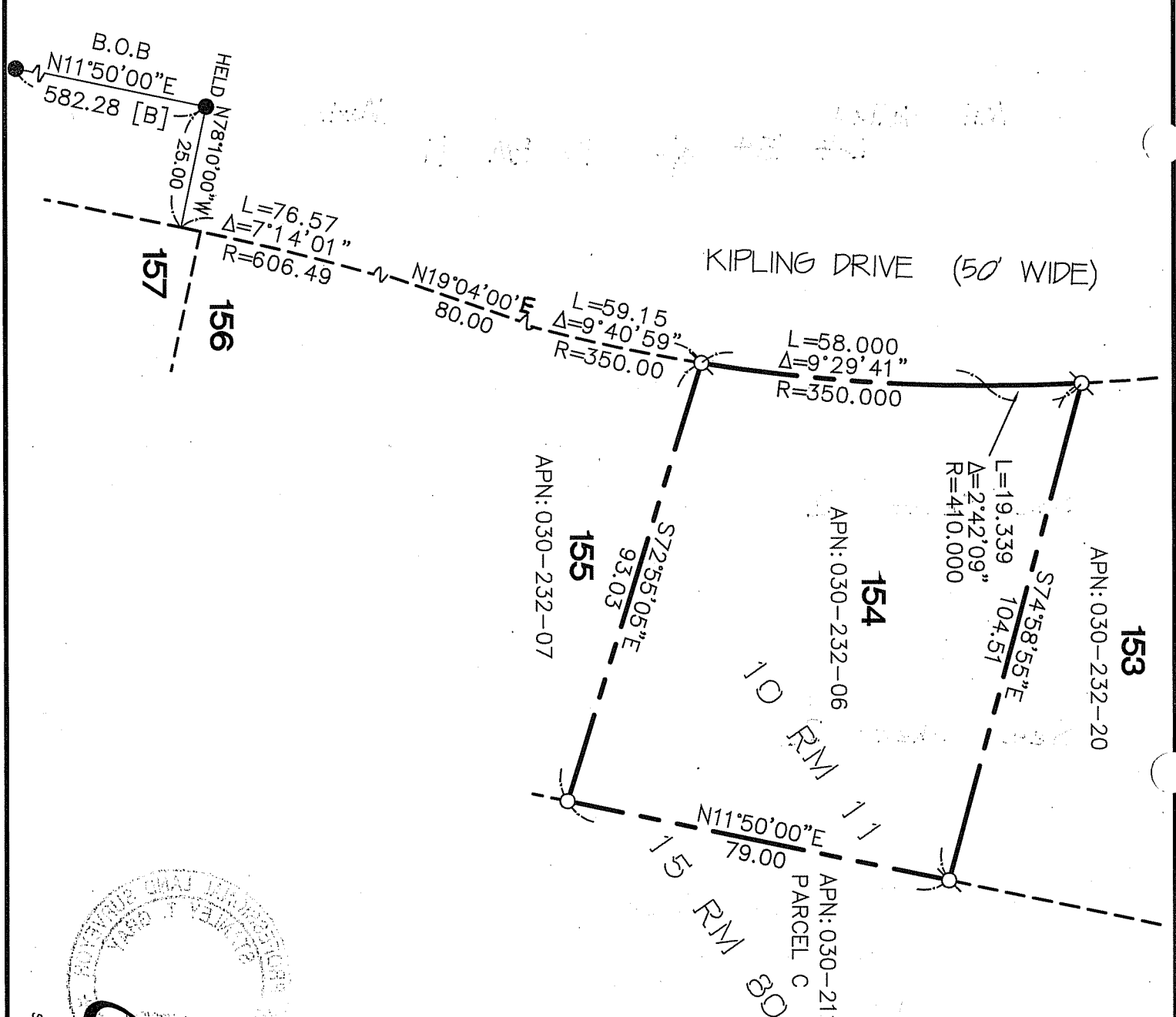
and examined and filed AUGUST 5, 2008

Signed [Signature] P.L.S or R.C.E. No. 30212

Title DEPUTY COUNTY SURVEYOR



County Surveyor's Comment _____



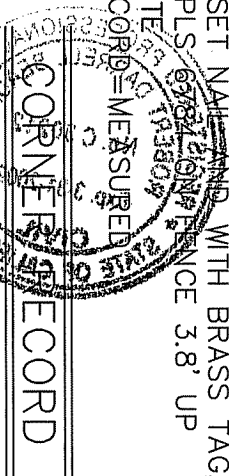
REFERENCE

[A] "MAP OF ENCHANTED FOREST UNIT THREE, MILL VALLEY CALIFORNIA" FILED FOR RECORD JANUARY 7 1959 IN VOLUME 10 OF MAPS, AT PAGE 11, MARIN COUNTY RECORDS.

[B] "RECORD OF SURVEY FILED FOR RECORD FEBRUARY IN BOOK 2006 OF MAPS, AT PAGE 042, MARIN COUNTY RECORDS."

LEGEND

- B.O.B BASIS OF BEARINGS
- FOUND CITY MONUMENT PER [B]
 - SET 5/8" REBAR WITH CAP, PLS 6784
 - SET NAIL AND WITH BRASS TAG, PLS 6784
- NOTE: SETTING DISTANCE 3.8' UP



MERIDIAN SURVEYING, INC.
 1812 UNION STREET
 SAN FRANCISCO, CA 94123
 (415) 440-4131
 info@meridiansurvey.com
 08055
 777 GRAND AVENUE, SUITE 202
 SAN RAFAEL, CA 94901
 (415) 456-5450