

CORNER RECORD

Document Number APN 030-201-14

City of MILL VALLEY County of Marin California.

Brief Legal Description: LOT 7, Map of Enchanted Knolls Unit One; Bk. 8 of Maps Pg. 27 Marin Co Rcds.

CORNER TYPE:

Government Corner Control
 Meander Property
 Rancho Other
 Date of Survey _____

COORDINATES

[Optional]
 N > _____
 E > _____
 Zone _____ Datum _____
 Elev > _____

CORNER:----- Left as found Found & Tagged Established Reestablished Rebuilt

Identification & Type of Corner Found: Evidence used to identify or procedure used to establish or reestablish the corner:

FND. EXISTING WELL MONS. PER RECORD MAP

A description of the physical condition of the monument as found and as set or reset:

SET 5/8" REBAR & CAP, RCE# 18200, AT LOCATIONS SHOWN ON REVERSE.

SURVEYOR'S STATEMENT

The corner record was prepared by me or under my direction in conformance with

the Land Surveyors' Act on JUN 20 2001

Signed : _____ LS or RCE # 18200



COUNTY SURVEYORS STATEMENT

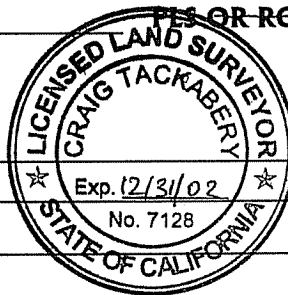
This corner record was received: 8-6 2001

and examined and filed 8-6 2001

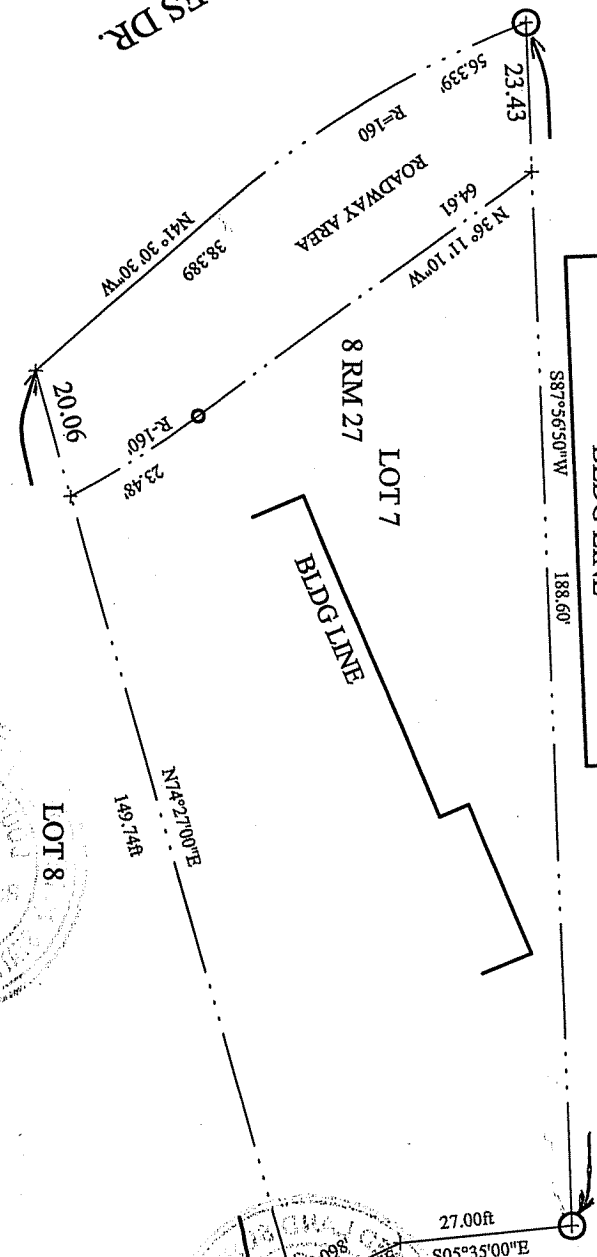
Signed _____ TITLE OR RCE NO. 7128

Title: Deputy

COUNTY SURVEYOR'S COMMENT _____



ROQUE MORAES DR.
R/W VARIES



LOT 6

LOT 7
8 RM 27

LOT 8

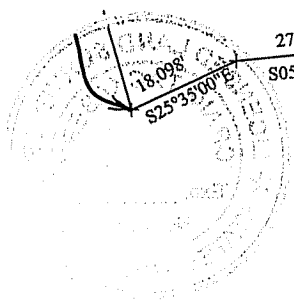
BLDG LINE

BLDG LINE



LEGEND

○ SET 5/8" REBAR & CAP C18200 AS SHOWN



CORNER RECORD MAP

SHOWING
LANDS OF WALTON

APN: 030-201-14

49 ROQUE MORAES MILL VALLEY

JUNE, 2001

SCALE 1" = 30'