

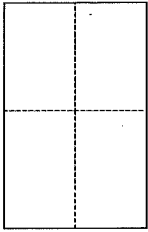
CORNER RECORD

Document Number 030-193-19

City of Mill Valley

County of Marin, California

Brief Legal Description Lot 115, of "Enchanted Knolls", Unit One, 8 RM 27,
Marin County Records



CORNER TYPE

Government Corner Control
Meander Property
Rancho Other
Date of Survey July 6 & 8, 2015

COORDINATES (Optional)

N. _____
E. _____
Zone NAD27 NAD83
NAD83 Epoch _____
Elev. _____
Vert. Datum: NGVD29 NAVD88
Meas. Units: Metric Imperial

Corner - Left as found Found and tagged Established Reestablished Rebuilt

Identification and type of corner found: Evidence used to identify or procedure used to establish or reestablish the corner:
Found Centerline Monuments along Millay Place, to be in good condition
and record position, to reestablish property corners.

A description of the physical condition of the monument as found and as set or reset: _____
Set (5) 1/2" iron pipes, Tagged LS7237, one of which is a 2ft witness
corner, located at the most northerly corner of above said Property.

SURVEYOR'S STATEMENT

This Corner Record was prepared by me or under my direction in conformance with
the Land Surveyor's Act on July 16, 2015
Signed Michael E. Ford P.L.S. or R.C.E. No. 7237

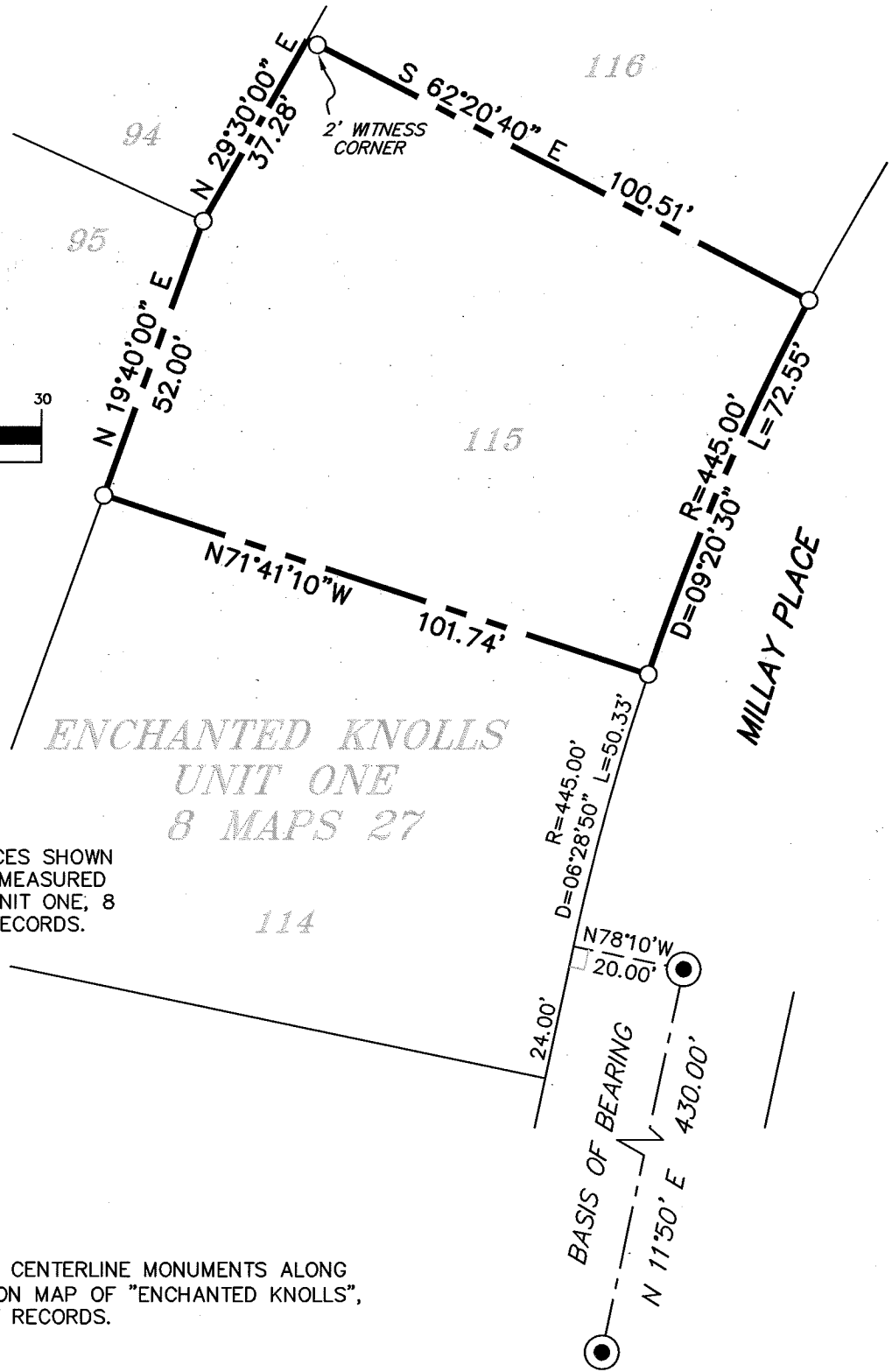
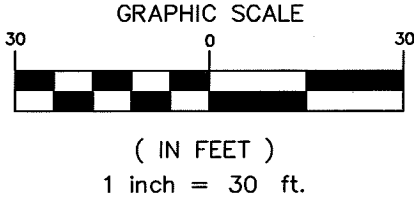


COUNTY SURVEYOR'S STATEMENT

This Corner Record was received OCTOBER 6, 2015
and examined and filed OCTOBER 6, 2015
Signed Richard G. Simonitch P.L.S. or R.C.E. No. 7821
Title County Surveyor



County Surveyor's Comment



ENCHANTED KNOLLS
UNIT ONE
8 MAPS 27

NOTE

ALL BEARINGS AND DISTANCES SHOWN HEREON ARE RECORD AND MEASURED PER ENCHANTED KNOLLS, UNIT ONE, 8 MAPS 27, MARIN COUNTY RECORDS.

BASIS OF BEARINGS

N 11°50' E BETWEEN FOUND CENTERLINE MONUMENTS ALONG MILLAY PLACE, AS SHOWN ON MAP OF "ENCHANTED KNOLLS", 8 MAPS 27, MARIN COUNTY RECORDS.

LEGEND

- ⊙ CENTERLINE MONUMENT(PIN IN CONC.)
- SET 1/2" IRON PIPE TAGGED LS7237



2300 bethards drive, suite J
santa rosa, california 95405
p 707.542.8513 - f 707.542.1825
www.michaelfordinc.com