

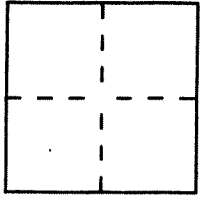
CORNER RECORD

Document Number A.P. # 30-193-16

City of MILL Valley

County of MARIN, California

Brief Legal Description #16 Millay Place Mill Valley APN 30-193-16 LOT 118 GRM27



CORNER TYPE

**COORDINATES
(Optional)**

- Government Corner
- Meander
- Rancho
- Date of Survey _____
- Control
- Property
- Other

N. _____
 E. _____
 Zone _____ Datum _____
 Elev. _____

Corner — Left as found Found and tagged Established Reestablished Rebuilt

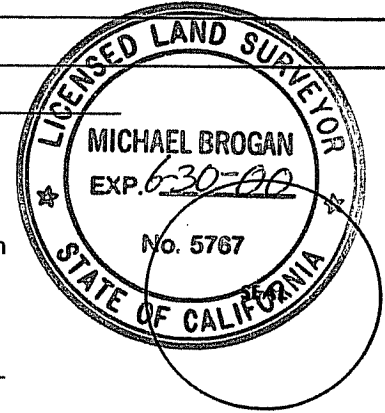
Identification and type of corner found: Evidence used to identify or procedure used to establish or reestablish the corner:
See Sketch

A description of the physical condition of the monument as found and as set or reset:
See Sketch

SURVEYOR'S STATEMENT

This Corner Record was prepared by me or under my direction in conformance with the Land Surveyors' Act on October 28 1996.

Signed Michael A. Brogan L.S. or R.C.E. Number 5767



COUNTY SURVEYOR'S STATEMENT

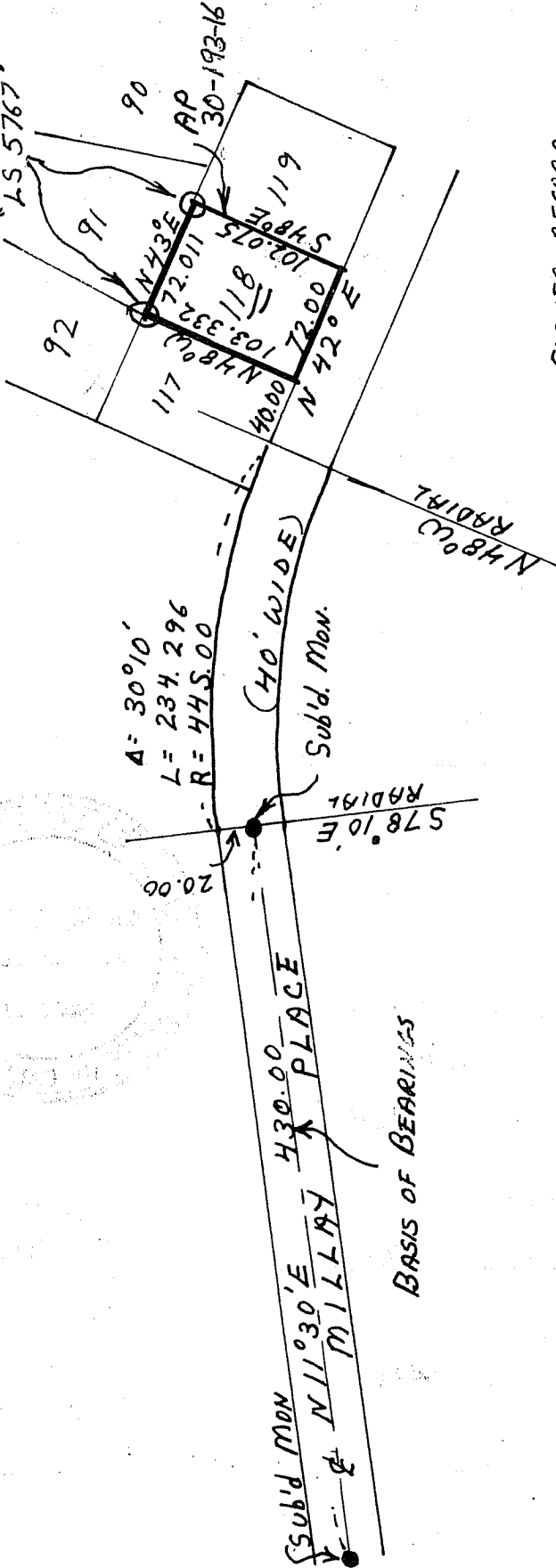
This Corner Record was received November 15 1996 and examined and filed 11-27 1996.

Signed HDS Title DES



County Surveyor's Comment _____

SET 1/2" REBAR
WITH PLASTIC CAP
"LS 5767"



CORNER RECORD
LANDS OF VIZKELETTY
LOT 118 8 R.M. 27

Enchanted Knolls Unit One

M. BROGAN & ASSOCIATES, INC
319 Miller Avenue
Mill Valley, CA 94941
415-388-7865 Fax 388-7874
#5281

APN 30-193-16

NORTH
Scale: 1" = 100'