

# CORNER RECORD

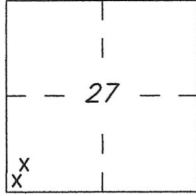
Agency Index DPW #19-148

Document Number APN 030-192-16

City of MILL VALLEY County of MARIN, California

Brief Legal Description LOTS 61 & 68 OF ENCHANTED KNOLLS UNIT ONE BOOK 8 MAPS PAGE 27

T1N R6W MDM



### CORNER TYPE

Government Corner  Control   
 Meander  Property   
 Rancho  Other   
 Date of Survey OCTOBER 24, 2019

### COORDINATES (Optional)

N. \_\_\_\_\_ E. \_\_\_\_\_  
 Elevation. \_\_\_\_\_  
 Units Metric  U.S. Survey Foot   
 Horizontal Datum \_\_\_\_\_  
 Zone \_\_\_\_\_ Epoch Date \_\_\_\_\_  
 Vertical Datum \_\_\_\_\_

Complies with Public Resources Code §§8801-8819  
 Complies with Public Resources Code §§8890-8902

PLS Act Ref.:  8765(d)  8771  8773  Other:

Corner/Monument:  Left as found  Established  Rebuilt  Pre-Construction  
 Found and tagged  Reestablished  Referenced  Post-Construction

Narrative of corner identified and monument as found, set, reset, replaced, or removed:

See sheet #2 for description(s):

SET BRASS TAG "LS 8750" IN TOP OF FENCE CORNER POST AT SOUTHERLY CORNER OF LOT 61  
 SET 3/4" X 30" IRON PIPE WITH CONCRETE PLUG AND BRASS TAG "LS 8750" AT NORTHERLY CORNER OF LOT 68  
 AT RECORD BEARING AND DISTANCE FROM FOUND ORIGINAL SUBDIVISION MONUMENTS PER BOOK 8 MAPS PAGE 27 WHICH  
 IS FOUND TO BE IN HARMONY WITH FENCELINE OCCUPATION OF ADJOINING LOT BOUNDARIES  
 LINE WAS ESTABLISHED PURSUANT TO TOPO SURVEY OF LARGE AVULSIVE LANDSLIDE WHICH ORIGINATED ON LOT 68 IN 2018

### SURVEYOR'S STATEMENT

This Corner Record was prepared by me or under my direction in conformance with

the Professional Land Surveyor's Act on DECEMBER 17, 2019

Signed [Signature] P.L.S. or R.C.E. No. 8750



### COUNTY SURVEYOR'S STATEMENT

This Corner Record was received DECEMBER 24, 2019

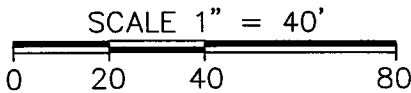
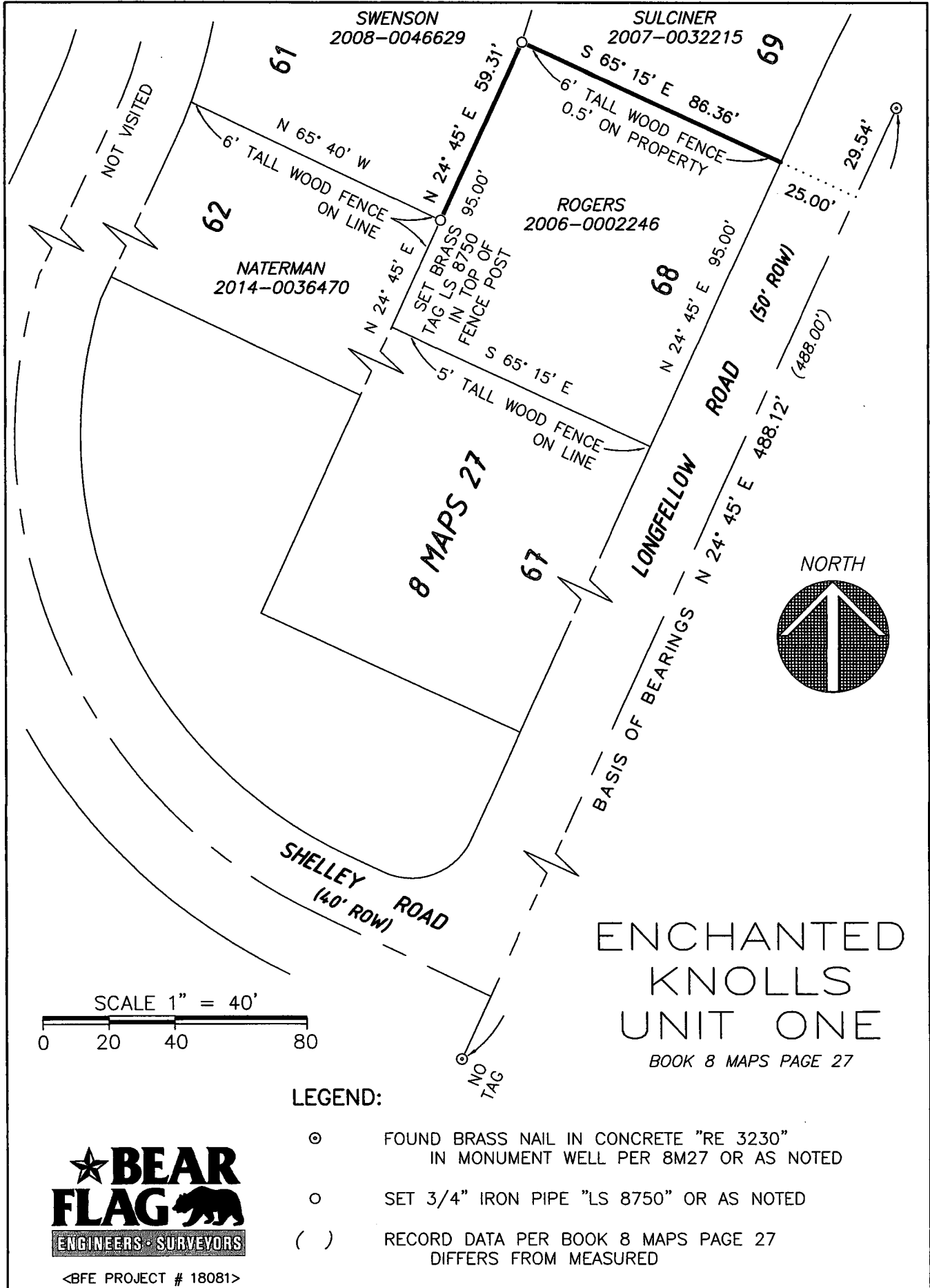
and examined and filed APR. 21, 2020

Signed [Signature] P.L.S. or R.C.E. No. 9292

Title DEPUTY C.S.

County Surveyor's Comment





LEGEND:

- ⊙ FOUND BRASS NAIL IN CONCRETE "RE 3230" IN MONUMENT WELL PER 8M27 OR AS NOTED
- SET 3/4" IRON PIPE "LS 8750" OR AS NOTED
- ( ) RECORD DATA PER BOOK 8 MAPS PAGE 27 DIFFERS FROM MEASURED



<BFE PROJECT # 18081>