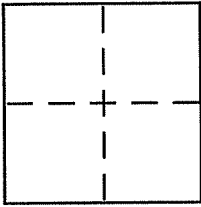


**CORNER RECORD**

Document Number 030-192-1Z  
County of Marin, California

City of Mill Valley  
Brief Legal Description Lot 72, 8 RM 27



**CORNER TYPE**

Government Corner  Control   
Meander  Property   
Rancho  Other   
Date of Survey 2/11/08

**COORDINATES (Optional)**

N. \_\_\_\_\_  
E. \_\_\_\_\_  
Zone \_\_\_\_\_ NAD27  NAD83   
NAD83 Epoch \_\_\_\_\_  
Elev. \_\_\_\_\_  
Vert. Datum: NGVD29  NAVD88   
Meas. Units: Metric  Imperial

Corner - Left as found  Found and tagged  Established  Reestablished  Rebuilt

Identification and type of corner found: Evidence used to identify or procedure used to establish or reestablish the corner:  
See page 2 and 3 of 3

ACCEPTED AND HELD CLOSEST PAIR OF REMAINING ORIGINAL INTER-VISIBLE STREET / SUBDIVISION MONUMENTS

A description of the physical condition of the monument as found and as set or reset:  
See page 2 of 3 and 3 of 3

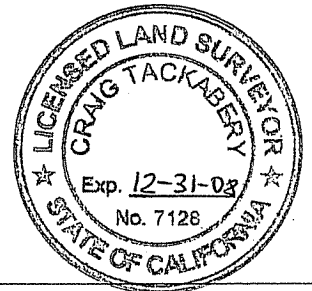
**SURVEYOR'S STATEMENT**

This Corner Record was prepared by me or under my direction in conformance with the Land Surveyor's Act on 2/12/08  
Signed [Signature] P.L.S or R.C.E. No. 6784



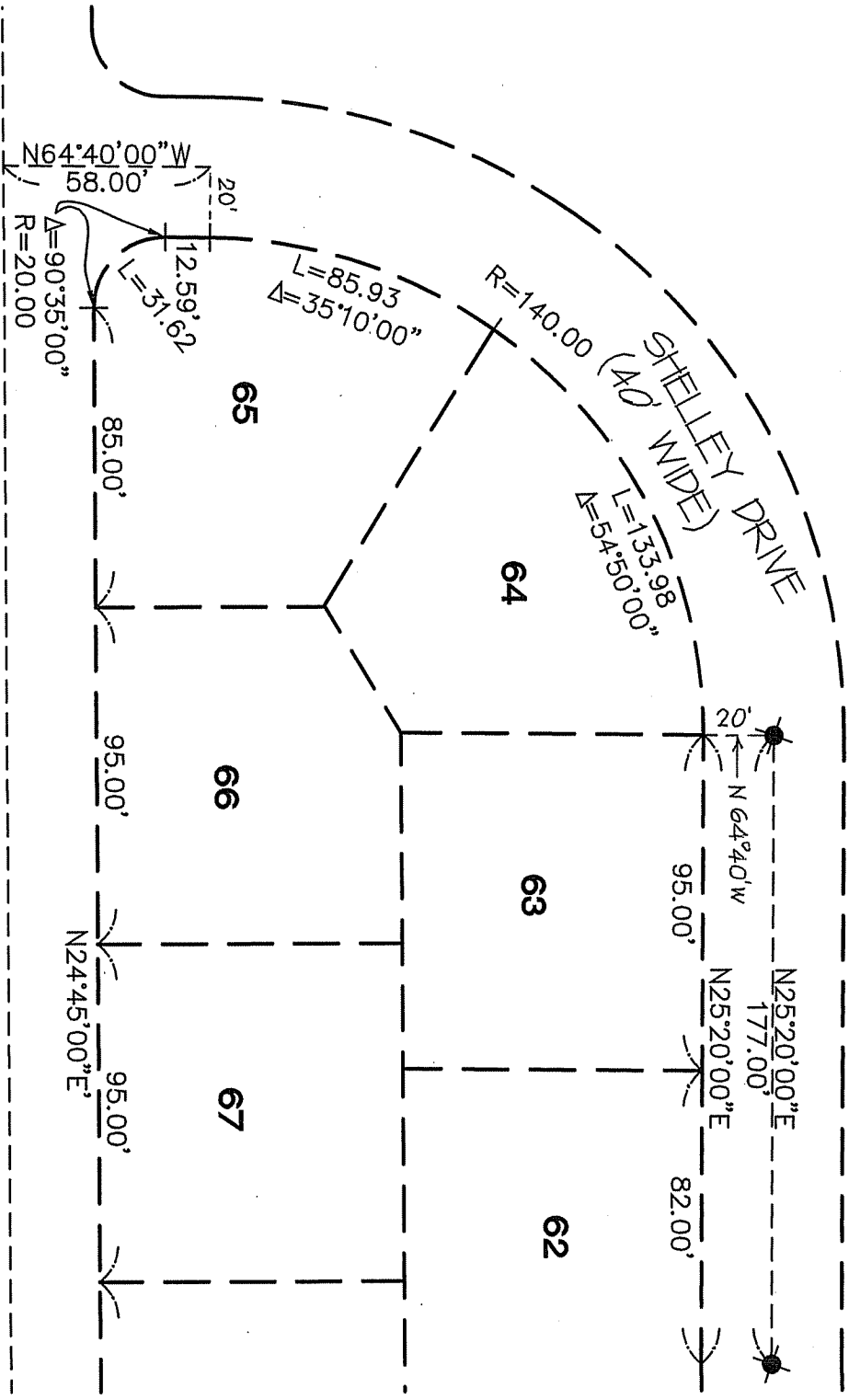
**COUNTY SURVEYOR'S STATEMENT**

This Corner Record was received MARCH 3, 2008  
and examined and filed MARCH 20, 2008  
Signed [Signature] P.L.S or R.C.E. No. 7128  
Title COUNTY SURVEYOR

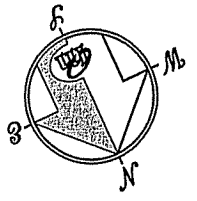


County Surveyor's Comment \_\_\_\_\_  
\_\_\_\_\_  
\_\_\_\_\_





SEE SHEET 2 OF 3



SHEET 3 OF 3

NOTE  
RECORD=MEASURED

CORNER RECORD

**MERIDIAN SURVEYING**  
ENGINEERING, INC.

1812 UNION STREET  
SAN FRANCISCO, CA 94123  
(415) 440-4131  
Info@meridiansurvey.com

08017  
777 GRAND AVENUE, SUITE 202  
SAN RAFAEL, CA 94901  
456-5450

C

C

C