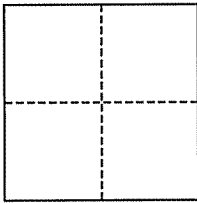


**CORNER RECORD**

City of Mill Valley

Document Number AP# 030-192-08  
County of Marin, California

Brief Legal Description Lot 57, 8 RM 27



**CORNER TYPE**

Government Corner  Control   
Meander  Property   
Rancho  Other   
Date of Survey August 13, 2010

**COORDINATES (Optional)**

N. \_\_\_\_\_  
E. \_\_\_\_\_  
Zone  NAD27  NAD83   
NAD83 Epoch \_\_\_\_\_  
Elev. \_\_\_\_\_  
Vert. Datum: NGVD29  NAVD88   
Meas. Units: Metric  Imperial

**Corner-** Left as found  Found and tagged  Established  Reestablished  Rebuilt

Identification and type of corner found: Evidence used to identify or procedure used to establish or reestablish the corner:  
Found street Monuments, per 8 RM 27, as shown

A description of the physical condition of the monument as found and as set or reset: Set three Hub and Tags, RCE 30465, at a 3' offset from Northern property line of Lot 57, as shown and noted

**SURVEYOR'S STATEMENT**

This corner Record was prepared by me or under my direction in conformance with the Land Surveyor's Act on September 30, 2010

Signed [Signature] P.L.S. or R.C.E. No. 30465

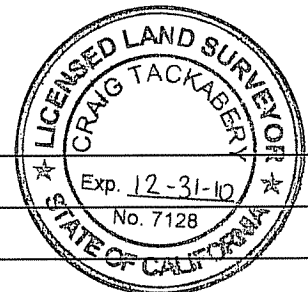


**COUNTY SURVEYOR'S STATEMENT**

This Corner Record was received OCTOBER 4, 2010 and examined and filed OCTOBER 7, 2010

Signed [Signature] P.L.S. or R.C.E. No. 7128

Title COUNTY SURVEYOR



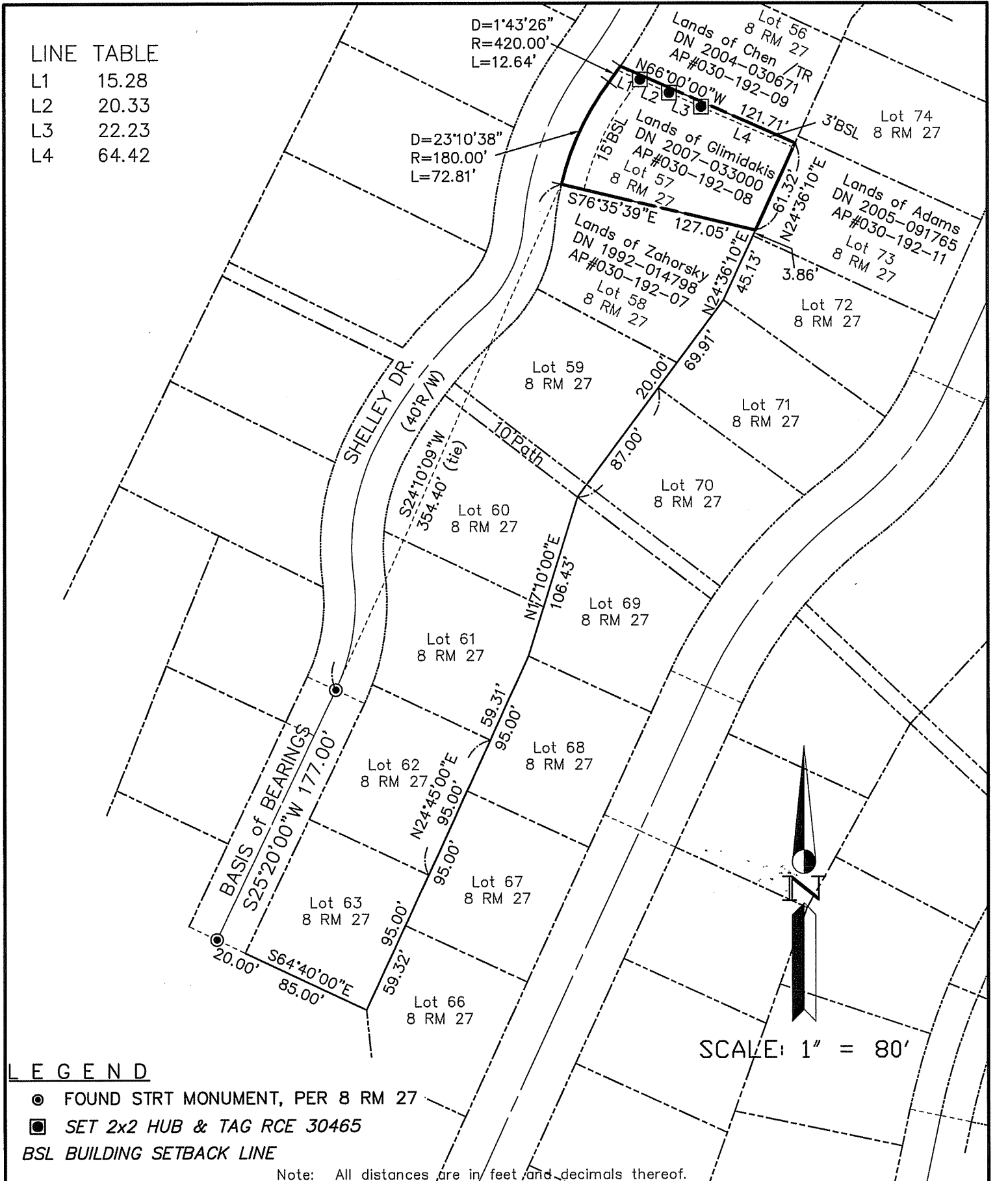
**County Surveyor's Comment** \_\_\_\_\_

LINE TABLE

L1	15.28
L2	20.33
L3	22.23
L4	64.42

D=1°43'26"  
R=420.00'  
L=12.64'

D=23°10'38"  
R=180.00'  
L=72.81'



LEGEND

- FOUND STRT MONUMENT, PER 8 RM 27
- SET 2x2 HUB & TAG RCE 30465
- BSL BUILDING SETBACK LINE

Note: All distances are in feet and decimals thereof.

SHEET	1	OF	1
SCALE:	1" = 80'	DESIGN:	PR
DATE:	Aug, 2010	DRAWN:	E.D.L.
FILE:	2010-073	CHECKED:	J.L.H

**J.L. ENGINEERING**  
 CIVIL ENGINEERS-LAND SURVEYORS  
 1539 4th ST., SAN RAFAEL, CA. 94901 (415) 457-6647

Corner Record

Lands of Glimidakis - 97 Shelley Dr.  
 APN 030-192-08, Mill Valley, Marin County, CA