

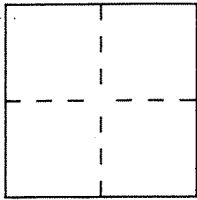
CORNER RECORD

Document Number A.P.N. 030-192-01

City of MILL VALLEY

County of MARIN, California

Brief Legal Description LOT 64 PER B MAPS 27



CORNER TYPE

Government Corner Control
Meander Property
Rancho Other
Date of Survey JULY 14, 1999

**COORDINATES
(Optional)**

N. _____
E. _____
Zone _____ Datum _____
Elev. _____

Corner — Left as found Found and tagged Established Reestablished Rebuilt

Identification and type of corner found: Evidence used to identify or procedure used to establish or reestablish the corner:

= SEE OVER =

A description of the physical condition of the monument as found and as set or reset:

= SEE OVER =

SURVEYOR'S STATEMENT

This Corner Record was prepared by me or under my direction in conformance with the Land Surveyors' Act on MAY 7, 2000

Signed David Contreras L.S. or R.C.E. Number _____



COUNTY SURVEYOR'S STATEMENT

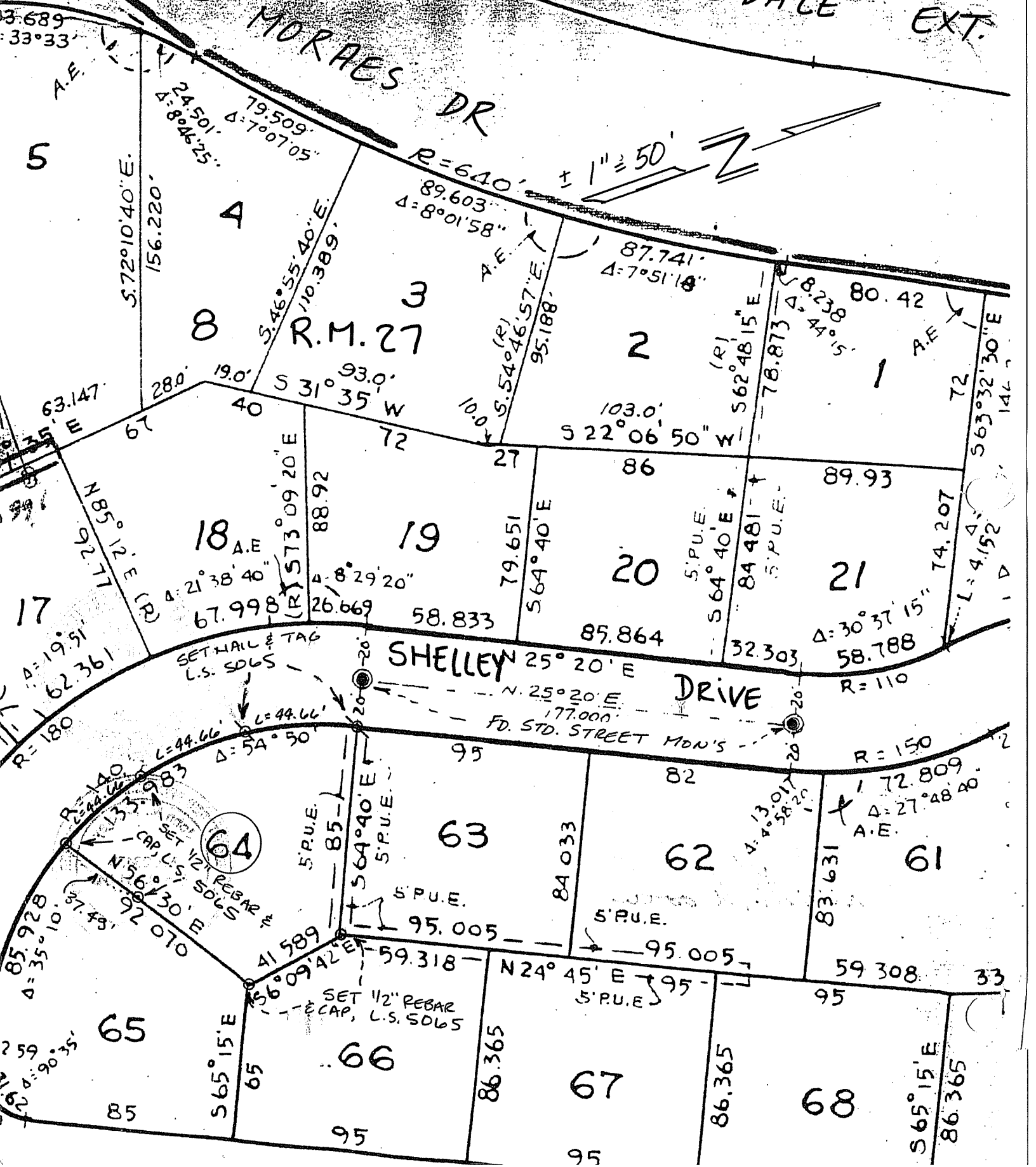
This Corner Record was received MAY 8, 2000 and examined and filed MAY 9, 2000

Signed John M. Woolley Title DEPUTY



County Surveyor's Comment _____

ROQUE MORAES DR EAST BLITHE DALE EXT.



33.689
33°33'

5
A.E.
24.501
Δ: 8°46'25"

17
A.E.
63.147
280'

18
A.E.
67.998
Δ: 21°38'40"

65
A.E.
85.928
Δ: 35°10'35"

66
A.E.
85.928
Δ: 35°10'35"

79.509
Δ: 7°07'05"

8
A
S. 72° 10' 40" E
156.220'

19
A.E.
88.92
Δ: 8°29'20"

64
S.P.U.E.
85

65
S. 65° 15' E
65

66
S. 65° 15' E
65

89.603
Δ: 8°01'58"

R.M. 27
S. 46° 55' 40" E
110.389'

20
S.P.U.E.
89.93

63
S.P.U.E.
85

66
S. 64° 40' E
85

67
S. 64° 40' E
85

87.741
Δ: 7°51'18"

2
S. 54° 46' 57" E
95.188'

21
S.P.U.E.
89.93

62
S.P.U.E.
82

67
S. 64° 40' E
85

68
S. 65° 15' E
86.365

R=640'

3
S. 31° 35' W
93.0'

19
S. 64° 40' E
79.651

63
S.P.U.E.
95.005

66
S. 64° 40' E
85

67
S. 64° 40' E
85

103.0'

2
S. 22° 06' 50" W
103.0'

20
S.P.U.E.
89.93

62
S.P.U.E.
82

67
S. 24° 45' E
95

68
S. 65° 15' E
86.365

80.42

1
S. 62° 48' 15" E
78.873'

21
S.P.U.E.
89.93

62
S.P.U.E.
82

67
S. 24° 45' E
95

68
S. 65° 15' E
86.365

8.238
Δ: 44° 15'

1
S. 62° 48' 15" E
78.873'

21
S.P.U.E.
89.93

62
S.P.U.E.
82

67
S. 24° 45' E
95

68
S. 65° 15' E
86.365

72

2
S. 22° 06' 50" W
103.0'

21
S.P.U.E.
89.93

62
S.P.U.E.
82

67
S. 24° 45' E
95

68
S. 65° 15' E
86.365

142

1
S. 62° 48' 15" E
78.873'

21
S.P.U.E.
89.93

62
S.P.U.E.
82

67
S. 24° 45' E
95

68
S. 65° 15' E
86.365

SHELLEY DRIVE

FD. STD. STREET MON'S

SETH HALL & TAG
L.S. SDGS

SET 1/2" REBAR
- ECAP, L.S. SDGS

64

