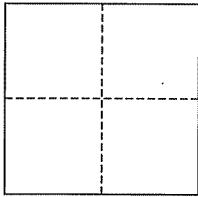


CORNER RECORD

City of Mill Valley

Document Number AP# 030-183-04
County of Marin, California

Brief Legal Description Lot 84, 8 RM 27



CORNER TYPE

Government Corner Control
Meander Property
Rancho Other
Date of Survey November 9, 2006

COORDINATES (Optional)

N. _____
E. _____
Zone _____ NAD27 NAD83
NAD83 Epoch _____
Elev. _____
Vert. Datum: NGVD29 NAVD88
Meas. Units: Metric Imperial

Corner- Left as found Found and tagged Established Reestablished Rebuilt

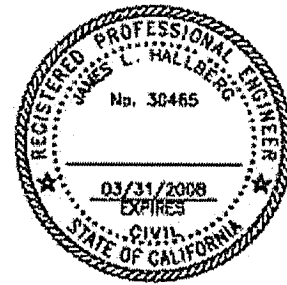
Identification and type of corner found: Evidence used to identify or procedure used to establish or reestablish the corner:
Found standard street monuments on Kipling Dr. & Millay Pl., per 8 RM 27

A description of the physical condition of the monument as found and as set or reset: Set Iron Pipe&Plug, or Drill Hole as noted, per 8 RM 27

SURVEYOR'S STATEMENT

This corner Record was prepared by me or under my direction in conformance with the Land Surveyor's Act on November 10, 2006

Signed [Signature] P.L.S. or R.C.E. No. 30465



COUNTY SURVEYOR'S STATEMENT

This Corner Record was received NOVEMBER 20, 2006 and examined and filed DECEMBER 13, 2006

Signed [Signature] P.L.S. or R.C.E. No. 7128

Title COUNTY SURVEYOR



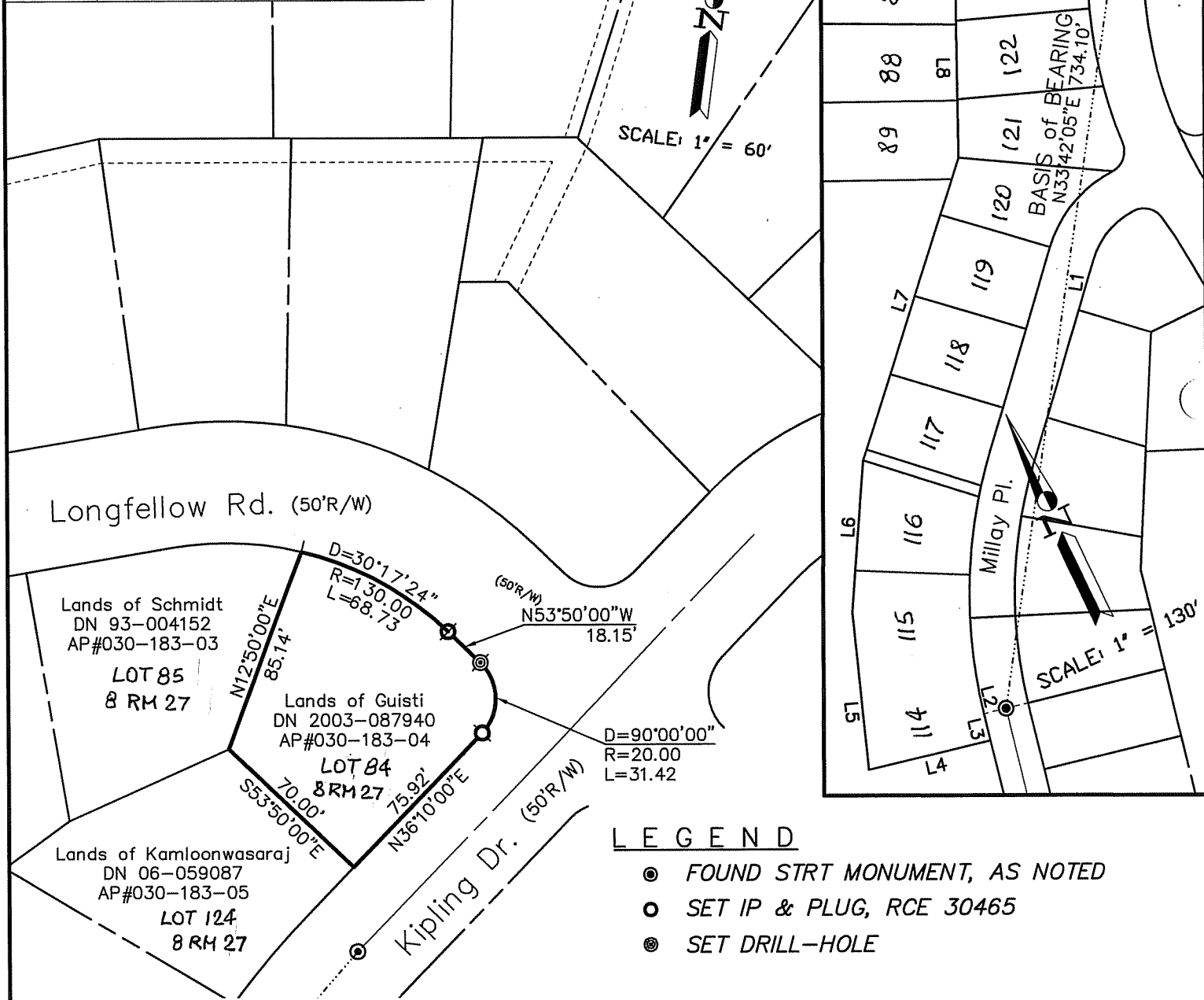
County Surveyor's Comment _____

LINE TABLE

LINE	LENGTH	BEARING	LINE	LENGTH	BEARING
L1	734.10'	S33°42'05"W	L9	60.00'	S46°20'00"W
L2	20.00'	S78°10'00"E	L10	71.12'	S58°02'00"W
L3	24.00'	N11°50'35"E	L11	85.14'	S12°50'00"W
L4	110.03'	S78°10'00"E	L12	50.00'	S36°09'57"W
L5	138.52'	S19°40'00"W	L13	18.15'	S53°50'00"E
L6	135.28'	S29°30'00"W	L14	45.08'	N36°10'00"E
L7	280.00'	S43°00'00"W	L15	25.00'	N53°50'00"W
L8	166.00'	S24°35'00"W	L16	235.00'	N36°10'00"E

CURVE TABLE

CURVE	DELTA	LENGTH	RADIUS
C1	30°17'24"	68.73'	130.00'
C2	90°00'00"	31.42'	20.00'



LEGEND

- FOUND STRT MONUMENT, AS NOTED
- SET IP & PLUG, RCE 30465
- ⊙ SET DRILL-HOLE

Note: All distances are in feet and decimals thereof.

SHEET	1	OF	1
SCALE:	As noted	DESIGN:	P.R.
DATE:	Nov. 2006	DRAWN:	E.L.
FILE:	2006-148	CHECKED:	J.L.H
2006-148\DWG\CORREC.DWG,COR-REC			

J.L. ENGINEERING
CIVIL ENGINEERS-LAND SURVEYORS
 1539 4th ST., SAN RAFAEL, CA. 94901 (415) 457-6647

Corner Record

Lands of Guisti - 3 Longfellow Rd.
 APN 030-183-04, Mill Valley, Marin County, CA