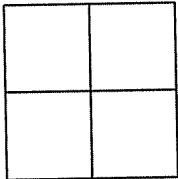


CORNER RECORD

Document Number AP: 030-182-21

City of MILL VALLEY County of Marin State of California.

Brief Legal Description: "ENCHANTED KNOLLS UNIT 1: BK. 8 RM 27, LOT 76



CORNER TYPE:

Government Corner Control
Meander Property
Rancho Other
Date of Survey JULY 27 / 08

COORDINATES:

[Optional]
N> _____
E> _____
Zone _____ Datum _____
Elev> _____

CORNER: ----- Left as found Found & Tagged Established Reestablished Rebuilt

Identification & Type of Corner Found: Evidence used to identify or procedure used to establish or reestablish the corner:

FOUND STD STREET WELL MONUMENT PER "8 RM 27 & 5/8" REBAR & CAP; RCE 18221 PER
COR RCD MAP 030-183-03

A description of the physical condition of the monument as found and as set or reset:

Original corners not found.
Set points as shown on reverse.



SURVEYOR'S STATEMENT:

The corner record was prepared by me or under my direction in conformance with the Land Surveyors' Act on JULY 27, 2008 2008

Signed: Douglas J. Matteson RCE# 18200

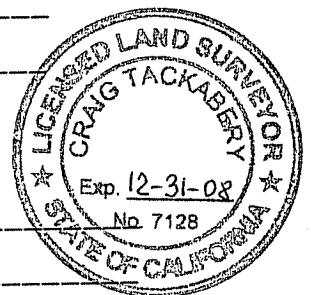
COUNTY SURVEYORS STATEMENT:

This corner record was received: JULY 31, 2008 _____

and filed AUGUST 19, 2008 _____

Signed: 

Title: COUNTY SURVEYOR



COUNTY SURVEYOR'S COMMENT _____

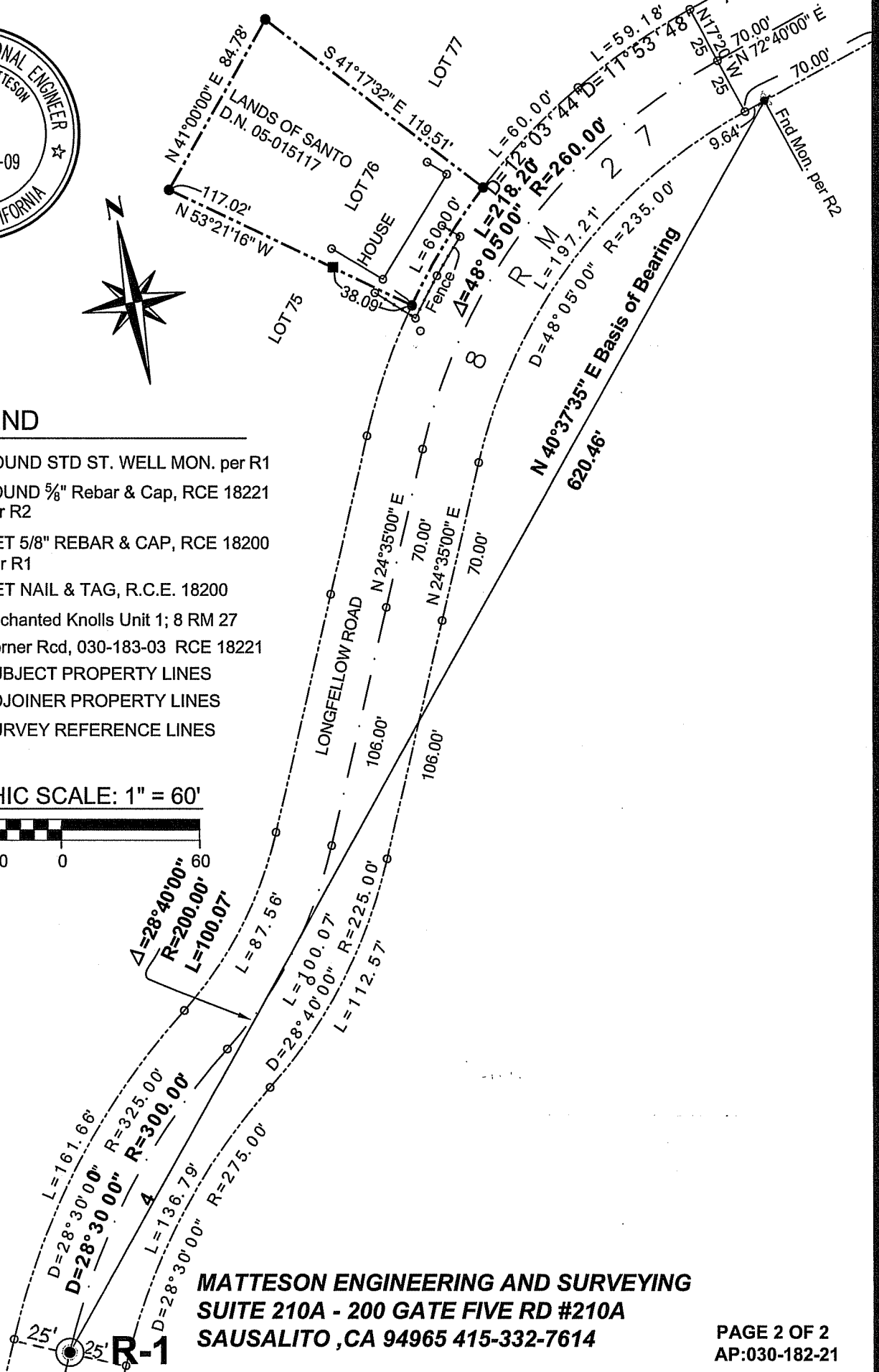
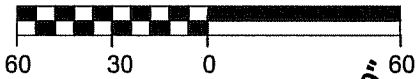


LEGEND

- FOUND STD ST. WELL MON. per R1
- FOUND 5/8" Rebar & Cap, RCE 18221 per R2
- SET 5/8" REBAR & CAP, RCE 18200 per R1
- SET NAIL & TAG, R.C.E. 18200
- R1 Enchanted Knolls Unit 1; 8 RM 27
- R2 Corner Rod, 030-183-03 RCE 18221

- SUBJECT PROPERTY LINES
- ADJOINER PROPERTY LINES
- SURVEY REFERENCE LINES

GRAPHIC SCALE: 1" = 60'



MATTESON ENGINEERING AND SURVEYING
SUITE 210A - 200 GATE FIVE RD #210A
SAUSALITO, CA 94965 415-332-7614