

L. A. Stevens & Associates, Inc.  
Professional Land Surveyors  
Novato, California

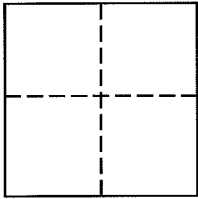
**Lands of Citroen**  
**Job #: 141568**

**CORNER RECORD**

Document Number 030-155-02

Vicinity of Mill Valley, County of Marin, California

Brief Legal Description: Being a portion of Document Number 2001-24729, Marin County Records as shown on that certain Record of Survey filed in Book 21 of Surveys at Page 42



**CORNER TYPE**

**COORDINATES (Optional)**

Government Corner  Control   
Meander  Property   
Rancho  Other   
Date of Survey April 18, 2014

N \_\_\_\_\_  
E \_\_\_\_\_  
Zone \_\_\_\_\_ NAD27  NAD83   
NAD 83 Epoch \_\_\_\_\_  
Elev. \_\_\_\_\_  
Vert. Datum: NGVD29  NAVD88   
Meas. Units: Metric  Imperial

**Corner -** Left as found  Found and tagged  Established  Reestablished  Rebuilt

Identification and type of corner found: Evidence used to identify or procedure used to establish or reestablish the corner:  
SEE SHEET 2 OF 2

A description of the physical condition of the monument as found and as set or reset:  
SEE SHEET 2 OF 2

**SURVEYOR'S STATEMENT**

This Corner Record was prepared by me or under my direction in conformance with  
The Land Surveyor's Act on April <sup>25</sup>~~29~~, 2011.

Signed [Signature] P.L.S 6649



**COUNTY SURVEYOR'S STATEMENT**

This Corner Record was received MAY 19, 2014

and examined and filed MAY 23, 2014

Signed [Signature] P.L.S. or R.C.E. No. 7821

Title DEPUTY

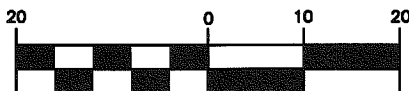
County Surveyors' Comment \_\_\_\_\_



All distances shown are in feet and decimals thereof

S'LY FACE OF  
FENCE OVER 1.8'

### GRAPHIC SCALE

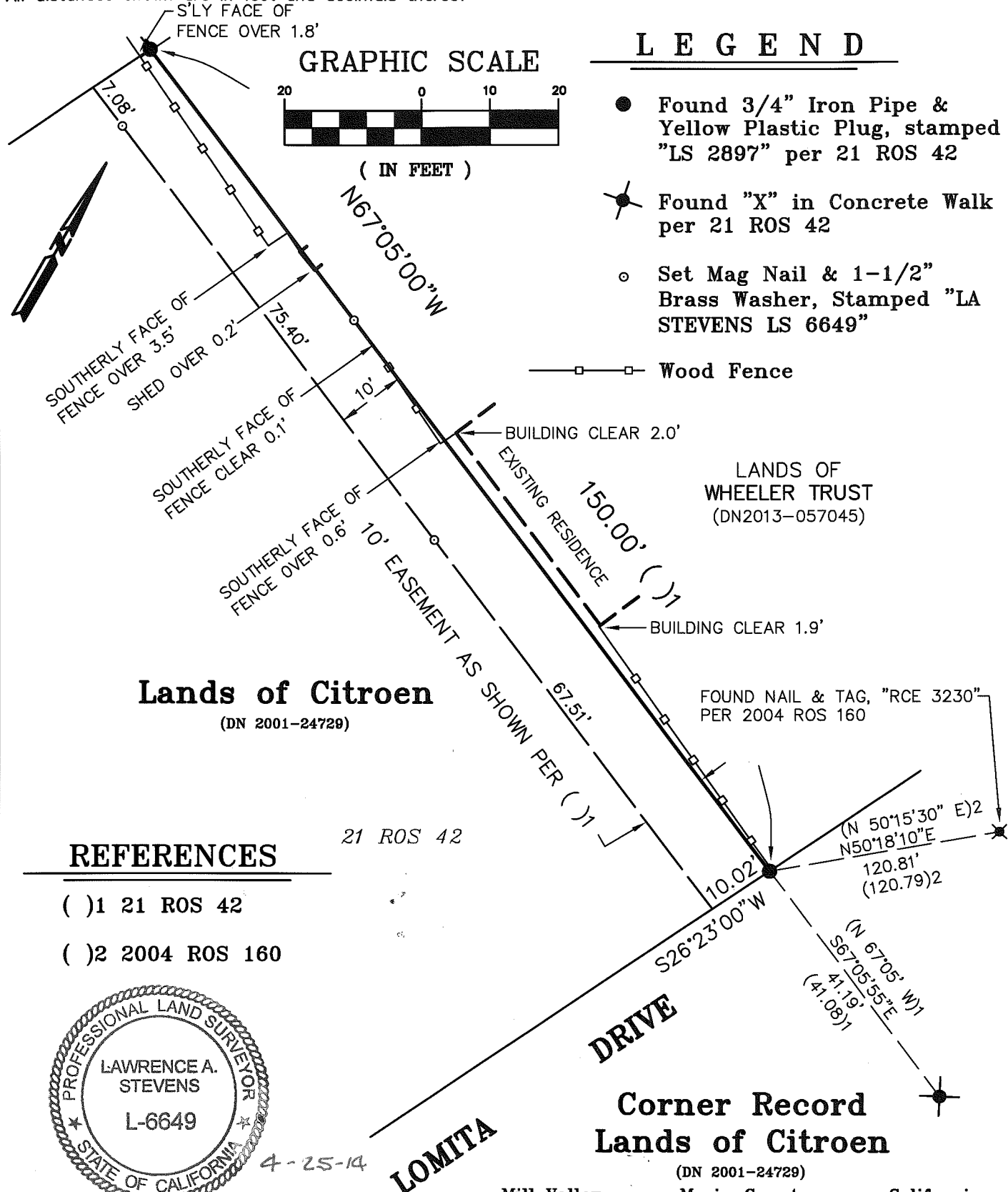


( IN FEET )

### LEGEND

- Found 3/4" Iron Pipe & Yellow Plastic Plug, stamped "LS 2897" per 21 ROS 42
- ★ Found "X" in Concrete Walk per 21 ROS 42
- Set Mag Nail & 1-1/2" Brass Washer, Stamped "LA STEVENS LS 6649"

— □ — □ — Wood Fence



**Lands of Citroen**  
(DN 2001-24729)

LANDS OF  
WHEELER TRUST  
(DN2013-057045)

### REFERENCES

- ( )1 21 ROS 42
- ( )2 2004 ROS 160



4-25-14

**LOMITA**  
DRIVE

### Corner Record Lands of Citroen

(DN 2001-24729)

Mill Valley Marin County California  
Scale: 1" = 20' April 2014

**L.A. Stevens & Associates, Inc.**

Professional Land Surveyors \* (415) 382-7713  
7 Commercial Blvd., Suite 1 \* Novato, CA 94949

Lawrence A. Stevens, PLS 6649