

CORNER RECORD

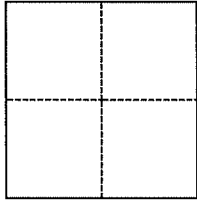
Agency Index 21-161

Document Number 030-126-01

City of Mill Valley County of Marin, California

Brief Legal Description MON. ALONG E. BLITHEDALE AVE., AS SHOWN ON 1999 SURVEYS 77

CORNER TYPE



- Government Corner
- Meander
- Rancho
- Control
- Property
- Other

Date of Survey August 17, 2021

COORDINATES (Optional)

N. _____ E. _____

Elevation _____

Units Metric U.S. Survey Foot

Horizontal Datum _____

Zone _____ Epoch Date _____

Vertical Datum _____

Complies with Public Resources Code §§8801-8819

Complies with Public Resources Code §§8890-8902

PLS Act Ref.: 8765(d) 8771 8773 Other:

Corner/Monument: Left as found Established Rebuilt Pre-Construction

Found and tagged Reestablished Referenced Post-Construction

Narrative of corner identified and monument as found, set, reset, replaced, or removed:

See sheet #2 for description(s):

SURVEYOR'S STATEMENT

This Corner Record was prepared by me or under my direction in conformance with

the Professional Land Surveyors' Act on October 8, 2021

Signed [Signature] P.L.S. or R.C.E. No. 8940



COUNTY SURVEYOR'S STATEMENT

This Corner Record was received 10-18-21

and examined and filed 1-31-22

Signed [Signature] P.L.S. or R.C.E. No. 9292

Title DEPUTY

County Surveyor's Comment

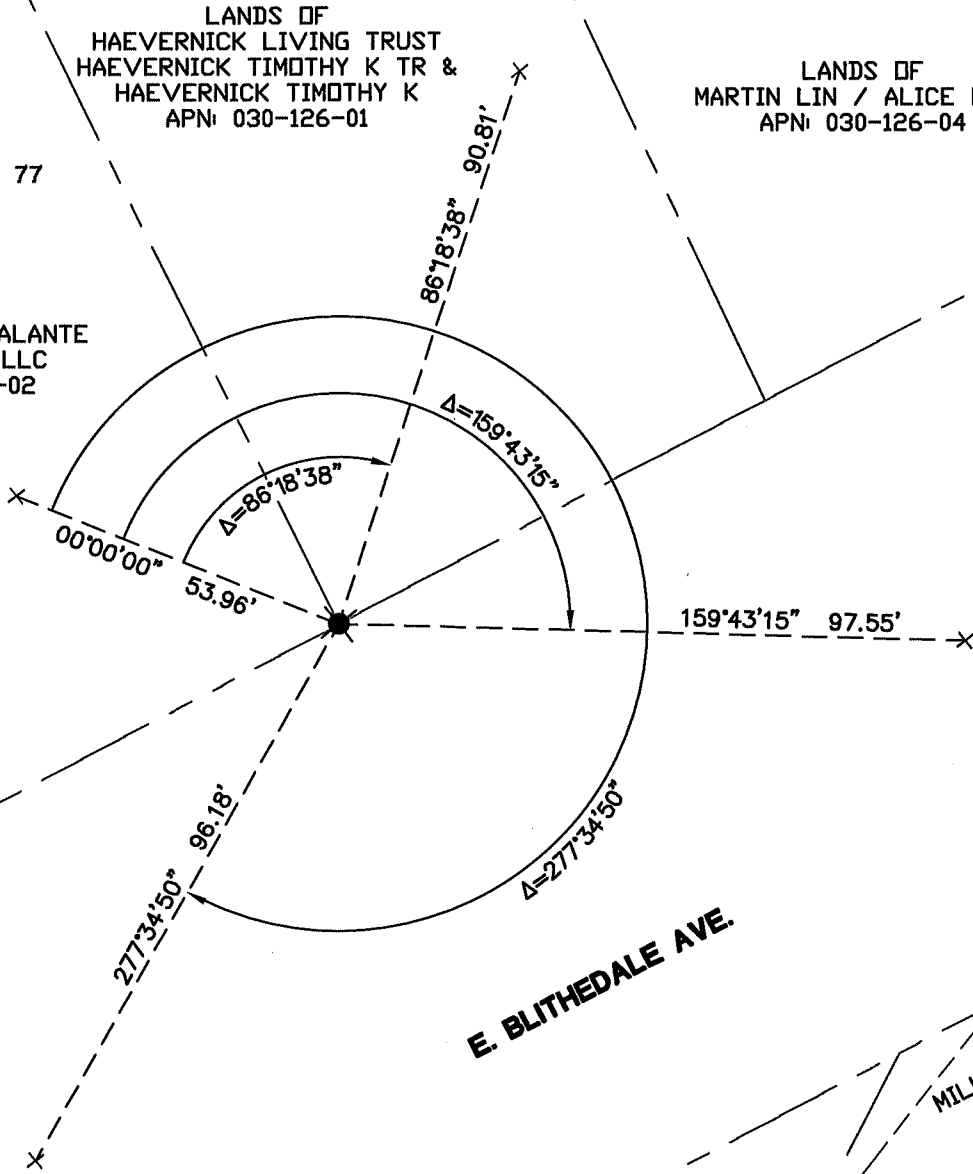


LANDS OF
HAEVERNICK LIVING TRUST
HAEVERNICK TIMOTHY K TR &
HAEVERNICK TIMOTHY K
APN: 030-126-01

LANDS OF
MARTIN LIN / ALICE FANG
APN: 030-126-04

1999 MAPS 77

LANDS OF
BIDINE MILLER GALANTE
MILL VALLEY LLC
APN: 030-126-02






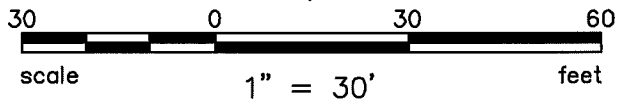
E. BLITHEDALE AVE.

LANDS OF
MILL VALLEY CITY OF
APN: 030-124-11

BOUNDARY SHOWN FOR CONTEXT ONLY

LEGEND

-  FOUND NAIL & TAG
-  SET CUT CROSS REFERENCE MARK
-  TIE LINE



Plot Oct 08, 2021 at 4:54pm



200 4th STREET
SUITE 300
SANTA ROSA, CA 95401
(707) 583-8500
www.bkf.com

Jonathan P Shattuck
JONATHAN P SHATTUCK PLS 8940



211158_CR.dwg

COPYRIGHT © 2021 BKF ENGINEERS