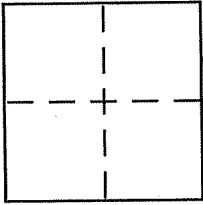


CORNER RECORD

Document Number APN 030-065-04
County of Marin, California

City of Mill Valley

Brief Legal Description Lot 82 of 5 RM 106



CORNER TYPE

Government Corner Control
Meander Property
Rancho Other
Date of Survey 10-18-10

COORDINATES (Optional)

N. _____
E. _____
Zone _____ NAD27 NAD83
NAD83 Epoch _____
Elev. _____
Vert. Datum: NGVD29 NAVD88
Meas. Units: Metric Imperial

Corner - Left as found Found and tagged Established Reestablished Rebuilt

Identification and type of corner found: Evidence used to identify or procedure used to establish or reestablish the corner:

See page 2 of 2

A description of the physical condition of the monument as found and as set or reset:

See page 2 of 2

SURVEYOR'S STATEMENT

This Corner Record was prepared by me or under my direction in conformance with the Land Surveyor's Act on 4 November 2010

Signed [Signature] P.L.S. or R.C.E. No. 6784



COUNTY SURVEYOR'S STATEMENT

This Corner Record was received NOVEMBER 5, 2010

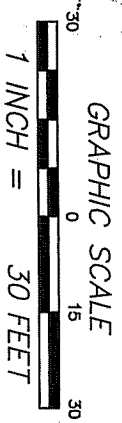
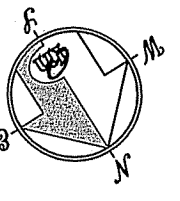
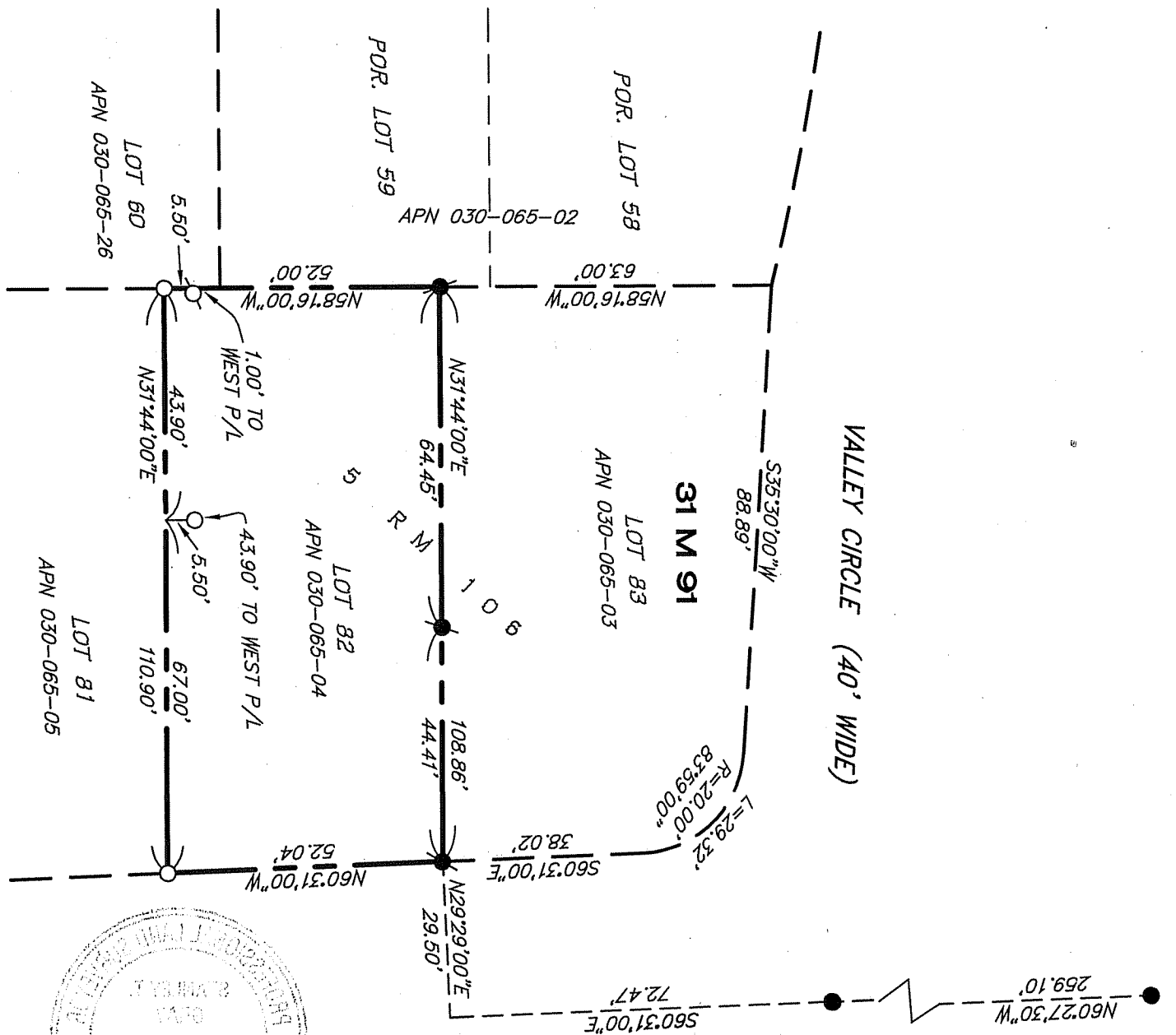
and examined and filed DECEMBER 6, 2010

Signed [Signature] P.L.S. or R.C.E. No. 7128

Title COUNTY SURVEYOR



County Surveyor's Comment _____

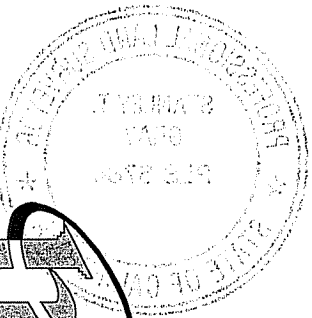


- LEGEND**
- FOUND CITY MONUMENT PER [A]
 - FD 5/8" REBAR WITH CAP, RCE 18200 PER [A]
 - SET 5/8" REBAR WITH CAP, PLS 6784
 - SET LEAD PLUG AND TAG PLS 6784

NOTE
 RECORD=MEASURED

REFERENCE

[A] "RECORD OF SURVEY, OF THE LANDS OF DIAS, MARIN, CALIFORNIA" FILED FOR RECORD JULY 26, 1993 IN BOOK 31 OF R05, AT PAGE 91, MARIN COUNTY RECORDS.



CORNER RECORD

MERIDIAN SURVEYING, INC.
 1812 UNION STREET
 SAN FRANCISCO, CA 94123
 (415) 440-4131
 info@meridiansurvey.com

777 GRAND AVENUE, SUITE 202
 SAN RAFAEL, CA 94901
 (415) 456-6460