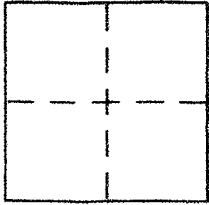


CORNER RECORD

Document Number: APN 30-054-02

City of Mill Valley County of MARIN, California

Chief Legal Description Lot 2, 2 R.M. 55, APN 30-054-02, 44 Locust Ave. M.V.



CORNER TYPE

Government Corner Control
Meander Property
Rancho Other
Date of Survey _____

COORDINATES (Optional)

N. _____
E. _____
Zone _____ NAD27 NAD83
NAD83 Epoch _____
Elev. _____
Vert. Datum: NGVD29 NAVD88
Meas. Units: Metric Imperial

Corner - Left as found Found and tagged Established Reestablished Rebuilt

Identification and type of corner found: Evidence used to identify or procedure used to establish or reestablish the corner:

See Sketch

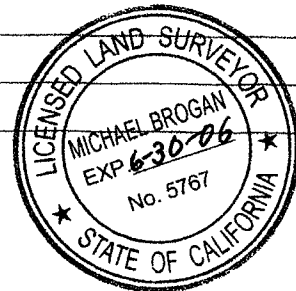
A description of the physical condition of the monument as found and as set or reset:

See Sketch

SURVEYOR'S STATEMENT

This Corner Record was prepared by me or under my direction in conformance with the Land Surveyor's Act on January 10, 2005

Signed Michael G. Bryan P.L.S. or R.C.E. No. 25 5767



COUNTY SURVEYOR'S STATEMENT

This Corner Record was received JANUARY 18, 2005

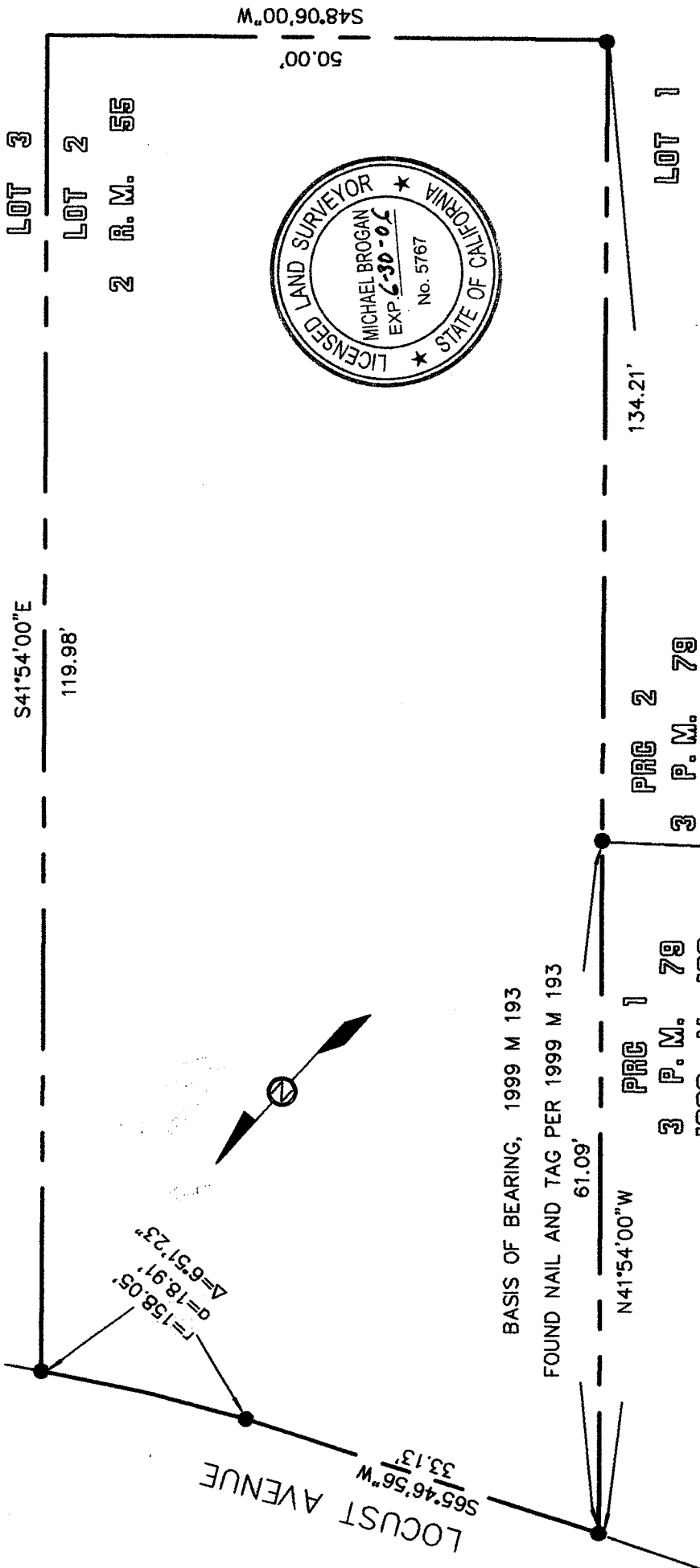
and examined and filed FEBRUARY 14, 2005

Signed [Signature] P.L.S. or R.C.E. No. 7128

Title COUNTY SURVEYOR



County Surveyor's Comment _____



BASIS OF BEARING, 1999 M 193
 FOUND NAIL AND TAG PER 1999 M 193

PRG 1
 3 P.M. 78
 1999 M 193

PRG 2
 3 P.M. 79

LOT 1

LOT 3

LOT 2

2 R.M. 55

CORNER RECORD
 LOT 2, 2 R.M. 55
 NO 44 LOCUST AVENUE
 APN 30-054-02
 MILL VALLEY MARIN COUNTY

M. BROGAN AND ASSOCIATES, INC.
 100 LABREA WAY
 SAN RAFAEL CA 94903
 JOB NO. 5624 DECEMBER 2004
 NOT TO SCALE

ALL DIMENSIONS ARE IN FEET AND DECIMALS THEREOF
 ● = SET 1/2" REBAR/CAP, LS 5767
 UNLESS OTHERWISE NOTED

LOCUST AVENUE
 S65°46'56"W
 33.13'

r=158.05'
 p=18.91'
 A=65°12'23"

61.09'

N41°54'00"W

134.21'

S41°54'00"E

119.98'

50.00'
 S48°06'00"W